

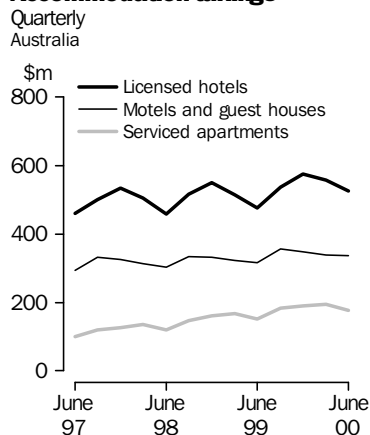


TOURIST ACCOMMODATION AUSTRALIA

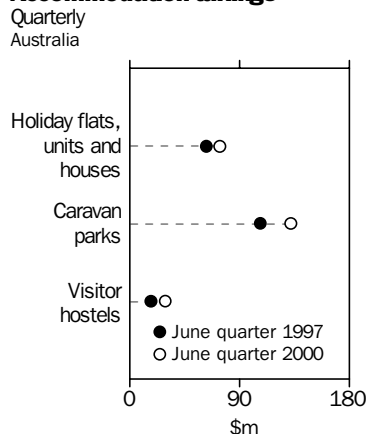
EMBARGO: 11:30AM (CANBERRA TIME) THURS 28 SEPT 2000

JUNE QTR KEY FIGURES

Accommodation takings



Accommodation takings



LICENSED HOTELS	June Qtr 1999	June Qtr 2000	change
Rooms available (no.)	71 908	74 422	3.5 %
Room occupancy rate (%)	60.1	62.0	1.9 pts
Takings from accommodation (\$'000)	476 859	526 143	10.3 %
Average takings per room night occupied (\$)	122.2	125.9	3.7 \$

MOTELS AND GUEST HOUSES

Rooms available (no.)	84 972	86 091	1.3 %
Room occupancy rate (%)	52.9	53.4	0.5 pts
Takings from accommodation (\$'000)	316 845	335 620	5.9 %
Average takings per room night occupied (\$)	77.7	80.4	2.7 \$

SERVICED APARTMENTS

Rooms available (no.)	28 423	32 317	13.7 %
Room occupancy rate (%)	56.2	56.0	-0.2 pts
Takings from accommodation (\$'000)	152 662	177 714	16.4 %
Average takings per room night occupied (\$)	105.6	108.1	2.5 \$

HOLIDAY FLATS, UNITS AND HOUSES

	June Qtr 1997	June Qtr 2000	change
Units, etc. available (no.)	27 314	27 474	0.6 %
Unit occupancy rate (%)	40.3	43.3	3.0 pts
Takings from accommodation (\$'000)	63 340	73 957	16.8 %
Average takings per unit night occupied (\$)	63.4	68.4	5.0 \$

CARAVAN PARKS

Sites, cabins, etc. available (no.)	254 286	245 271	-3.5 %
Site occupancy rate (%)	45.5	48.9	3.4 pts
Takings from accommodation (\$'000)	107 593	132 272	22.9 %
Average takings per site night occupied (\$)	10.2	12.1	1.9 \$

VISITOR HOSTELS

Bed spaces available (no.)	29 831	39 415	32.1 %
Bed occupancy rate (%)	45.7	48.9	3.2 pts
Takings from accommodation (\$'000)	17 656	29 624	67.8 %
Average takings per guest night occupied (\$)	14.3	16.9	2.6 \$

- For further information about these and related statistics contact Paull Hoffmann on 07 3222 6201 or the National Information Service on 1300 135 070.

PLEASE NOTE:
Some of the figures in the next issue of this publication will be affected by the GST. See Data Notes on page 2.

NOTES

FORTHCOMING ISSUES

ISSUE

RELEASE DATE

September Quarter 2000

15 December 2000

INTRODUCTION

For the four quarters of 2000, the scope of the Survey of Tourist Accommodation (STA) has been expanded. Over this period the following accommodation sectors will be covered:

- hotels, motels, guest houses and serviced apartments with 15 or more rooms;
- holiday flats, units and houses operated by owners, managers or real estate agents who have sole letting rights to at least 15 flats, units or houses for short term letting;
- caravan parks with 40 or more powered sites, cabins, etc; and
- visitor hostels with 25 or more bed spaces.

DATA NOTES

ABS statistical series are being impacted to varying degrees as a result of The New Tax System (TNTS), introduced in Australia from 1 July 2000. TNTS included the removal of Wholesale Sales Tax and the introduction of a Goods and Services Tax (GST), and as a result, a wide range of ABS data series will reflect significant immediate and subsequent impacts.

Future issues of this publication will publish accommodation takings on a GST inclusive basis.

HISTORICAL COMPARISONS

Statistics for hotels, motels, guest houses and serviced apartments are presented for the last 6 quarters to allow for comparison over time. However, data for caravan parks, holiday flats, units and houses and visitor hostels are compared with the corresponding period in 1997 when the data were last collected.

DATA REVISIONS

Revisions have been made to some tables published in the March quarter 2000 issue of this publication. These relate to accommodation takings for Queensland holiday flats and units; accommodation takings for Victoria star grade motels and guest houses; and capacity counts and accommodation takings for New South Wales and Western Australia caravan parks. Revised totals for the March quarter are included in this issue as Tables 28 to 35.

SYMBOLS AND OTHER USAGES

- n.a. not available
- n.p. not available for publication but included in totals where applicable
- r revised
- .. not applicable
- nil or rounded to zero

D. Trewin
Australian Statistician

ANALYSES AND COMMENTS

HOTELS, MOTELS AND SERVICED APARTMENTS

Strong growth in supply of serviced apartments continued with rooms available up 13.7% in June quarter 2000 compared with June quarter 1999. Increases of 3.5% for licensed hotels and 1.3% for motels and guest houses also occurred over the same period.

Overall demand for rooms in licensed hotels, motels and guest houses and serviced apartments grew moderately in June quarter 2000 when compared to June quarter 1999. The room occupancy rate for licensed hotels was 62.0%, an increase of 1.9% percentage points. The occupancy rate for motels and guest houses was 53.4%, an increase of 0.5 percentage points over June quarter 1999. The room occupancy rate for serviced apartments dropped by 0.2 percentage points to 56.0% in the June quarter 2000 compared to June quarter 1999.

Takings from accommodation for licensed hotels, motels and guest houses and serviced apartments increased for each accommodation type in June quarter 2000 when compared with June quarter 1999. The average takings per room night rose from \$122 to \$126 for licensed hotels, \$78 to \$80 for motels and guest houses and from \$106 to \$108 for serviced apartments.

HOLIDAY FLATS, UNITS AND HOUSES, CARAVAN PARKS AND VISITOR HOSTELS

There was a 32% increase in visitor hostel bed spaces available nationally when compared with June quarter 1997. Over the same period the number of holiday flats, units and houses available increased by a modest 0.6%. The capacity of caravan parks fell by 3.5% between June quarter 1997 and June quarter 2000.

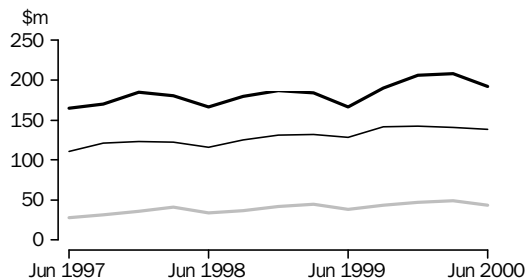
Between June quarter 1997 and June quarter 2000 cabins in caravan parks increased from 17,095 to 24,067 and the number of on-site vans fell from 17,392 to 16,432. Other powered and unpowered sites fell by 15,027 over the same period. These changes in the nature of caravan parks are reflected in an increase in takings over the three year period of 23%.

Average takings per unit night occupied for holiday flats, units and houses increased from \$63 in June quarter 1997 to \$68 in June quarter 2000. Takings per site night occupied in caravan parks increased slightly between the same periods from \$10 to \$12. Visitor hostels showed an increase in average takings per guest night from \$14 in June quarter 1997 to \$17 in June quarter 2000.

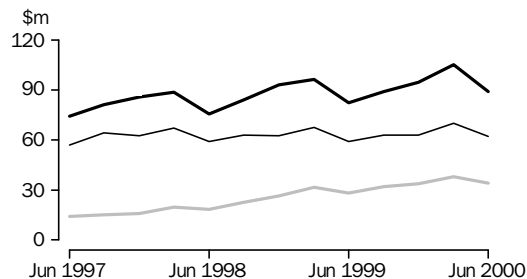
ACCOMMODATION TAKINGS

Licensed hotels
 Motels and guest houses
 Serviced apartments

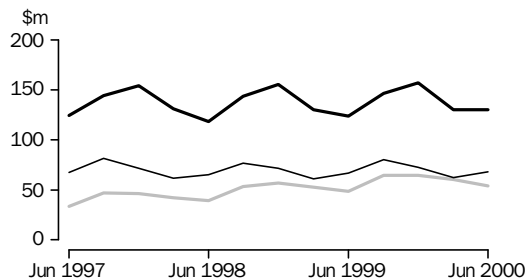
NEW SOUTH WALES



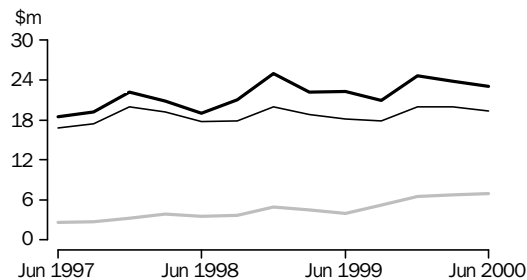
VICTORIA



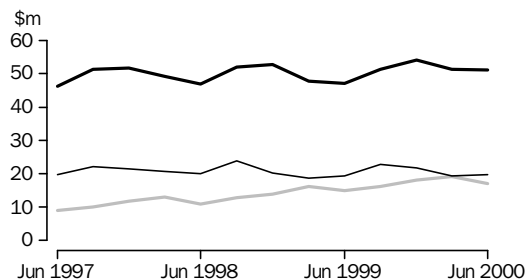
QUEENSLAND



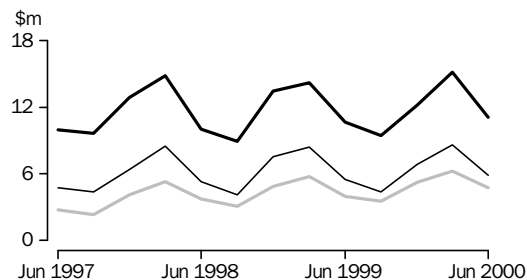
SOUTH AUSTRALIA



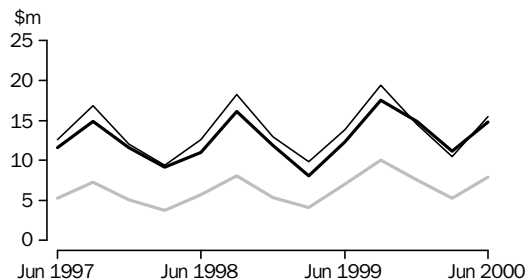
WESTERN AUSTRALIA



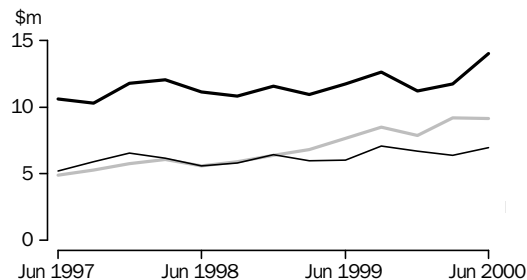
TASMANIA



NORTHERN TERRITORY



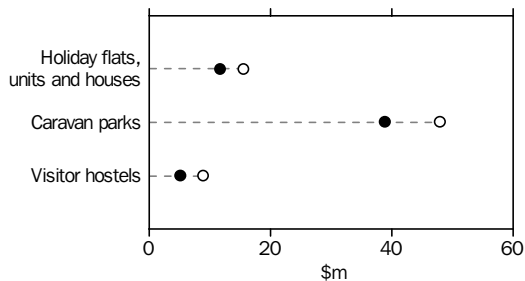
AUSTRALIAN CAPITAL TERRITORY



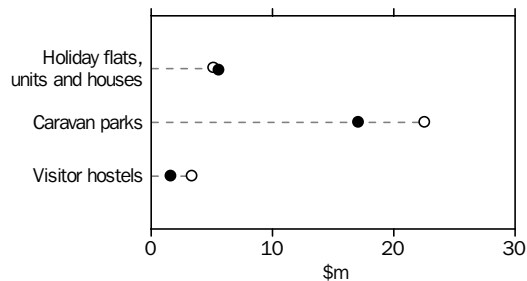
ACCOMMODATION TAKINGS

● June quarter 1997 ○ June quarter 2000

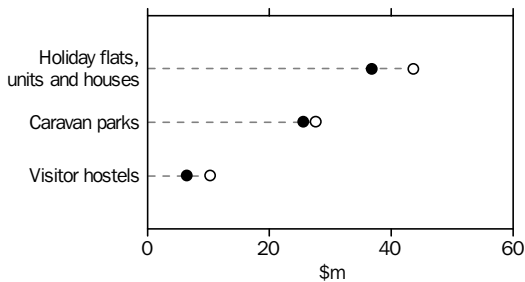
NEW SOUTH WALES



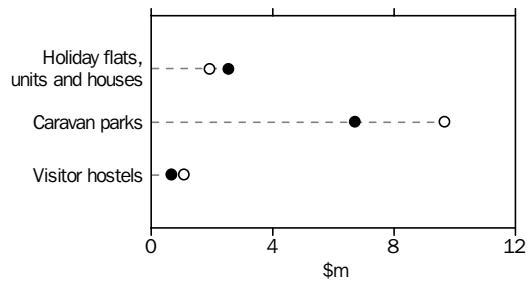
VICTORIA



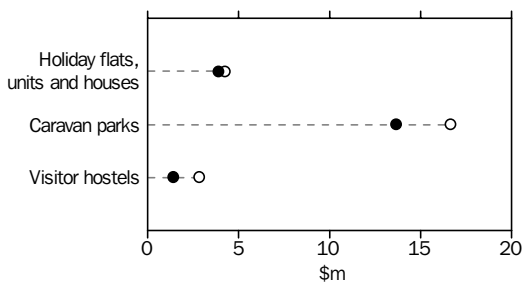
QUEENSLAND



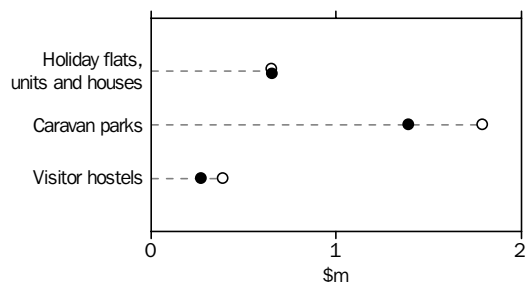
SOUTH AUSTRALIA



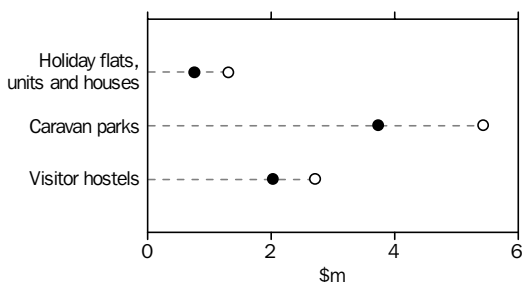
WESTERN AUSTRALIA



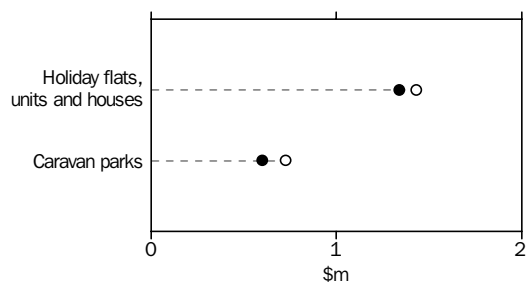
TASMANIA



NORTHERN TERRITORY



AUSTRALIAN CAPITAL TERRITORY



LIST OF TABLES

Page

	Summary of accommodation establishments	
1	Hotels, motels, guest houses and serviced apartments, Australia	8
2	Holiday flats, units and houses, Australia	9
3	Caravan parks, Australia	10
4	Visitor hostels, Australia	11
	Hotels, motels, guest houses and serviced apartments, by star grading	
5	Australia	12
6	New South Wales	14
7	Victoria	16
8	Queensland	18
9	South Australia	20
10	Western Australia	22
11	Tasmania	24
12	Northern Territory	26
13	Australian Capital Territory	28
	Hotels, motels, guest houses and serviced apartments, by Tourism Region	
14	New South Wales	30
15	Victoria	32
16	Queensland	34
17	South Australia	36
18	Western Australia	37
19	Tasmania	38
20	Northern Territory and Australian Capital Territory	39
	Holiday flats, units and houses: States, Territories and Australia	
21	Real estate agents	40
22	Other letting entities	41
23	Total	42
	Caravan parks: States, Territories and Australia	
24	Short-term	43
25	Long-term	44
26	Total	45
	Visitor hostels	
27	States, Territories and Australia	46
	DATA REVISED FOR MARCH QUARTER 2000	
28	Holiday flats, units and houses: States, Territories and Australia—Real estate agents	47
29	Holiday flats, units and houses: States, Territories and Australia—Other letting entities	48
30	Holiday flats, units and houses: States, Territories and Australia—Total	49
31	Hotels, motels, guest houses and serviced apartments, by star grading—Australia	50
32	Hotels, motels, guest houses and serviced apartments, by star grading—Victoria	52
33	Hotels, motels, guest houses and serviced apartments, by Tourism Region—Victoria	54
34	Caravan parks: States, Territories and Australia—Short-term	56
35	Caravan parks: States, Territories and Australia—Total	57

<i>Period</i>	<i>Establish-ments</i>	<i>Guest rooms</i>	<i>Bed spaces</i>	<i>Persons employed</i>	<i>Room nights occupied</i>	<i>Room occupancy rate</i>	<i>Guest nights</i>	<i>Bed occupancy rate</i>	<i>Guest arrivals</i>	<i>Average length of stay</i>	<i>Takings from accom-modation</i>
	no.	no.	no.	no.	'000	%	'000	%	'000	days	\$'000
LICENSED HOTELS WITH FACILITIES											
1999											
March quarter	753	71 637	193 366	70 611	4 004	62.4	6 575	38.0	2 783	2.4	514 165
June quarter	747	71 908	194 135	70 079	3 902	60.1	6 301	35.9	2 759	2.3	476 859
September quarter	753	72 265	194 757	71 644	4 281	64.9	7 122	40.0	3 074	2.3	537 904
December quarter	766	73 416	196 329	72 872	4 389	65.1	7 239	40.1	3 148	2.3	574 687
2000											
March quarter	767	73 760	197 179	72 728	4 239	63.3	6 950	38.9	2 989	2.3	556 825
June quarter	768	74 422	197 839	72 533	4 180	62.0	6 674	37.2	2 947	2.3	526 143
Year ended June 1999	16 136	62.4	26 465	37.9	11 382	2.3	2 057 344
Year ended June 2000	17 089	63.8	27 985	39.1	12 158	2.3	2 195 560
MOTELS AND GUEST HOUSES WITH FACILITIES											
1999											
March quarter	2 386	84 614	251 693	30 938	4 083	53.7	7 276	32.2	3 939	1.8	322 196
June quarter	2 398	84 972	253 031	30 629	4 080	52.9	7 074	30.8	3 907	1.8	316 845
September quarter	2 396	85 267	253 219	31 872	4 411	56.3	7 791	33.5	4 278	1.8	356 224
December quarter	2 413	86 019	255 588	31 429	4 328	54.8	7 578	32.3	4 163	1.8	347 480
2000											
March quarter	2 411	85 821	254 335	31 464	4 138	53.1	7 295	31.6	3 947	1.8	337 890
June quarter	2 412	86 091	254 578	31 341	4 176	53.4	7 214	31.2	3 977	1.8	335 620
Year ended June 1999	16 618	53.9	29 271	31.9	16 199	1.8	1 305 892
Year ended June 2000	17 053	54.4	29 878	32.1	16 364	1.8	1 377 214
SERVICED APARTMENTS											
1999											
March quarter	564	27 610	96 217	10 074	1 499	60.6	3 261	37.8	875	3.7	166 699
June quarter	575	28 423	99 507	10 183	1 445	56.2	3 038	33.8	852	3.6	152 662
September quarter	582	29 308	102 314	10 670	1 704	63.9	3 709	39.8	955	3.9	183 666
December quarter	600	30 644	107 748	10 851	1 696	60.8	3 673	37.3	1 002	3.7	190 280
2000											
March quarter	611	31 542	107 951	10 807	1 712	60.0	3 792	38.8	995	3.8	193 602
June quarter	625	32 317	110 055	11 384	1 644	56.0	3 482	34.8	922	3.8	177 714
Year ended June 1999	5 803	60.1	12 530	36.9	3 368	3.7	627 406
Year ended June 2000	6 756	60.1	14 656	37.6	3 874	3.8	745 262
TOTAL HOTEL, MOTEL, GUEST HOUSES AND SERVICED APARTMENTS											
1999											
March quarter	3 703	183 861	541 276	111 623	9 586	58.1	17 112	35.2	7 598	2.3	1 003 060
June quarter	3 720	185 303	546 673	110 891	9 427	56.2	16 412	33.1	7 518	2.2	946 366
September quarter	3 731	186 840	550 290	114 186	10 396	60.8	18 623	37.0	8 307	2.2	1 077 794
December quarter	3 779	190 079	559 665	115 152	10 414	59.7	18 490	36.0	8 313	2.2	1 112 447
2000											
March quarter	3 789	191 123	559 465	114 999	10 088	58.2	18 037	35.5	7 931	2.3	1 088 317
June quarter	3 805	192 830	562 472	115 258	10 000	57.1	17 370	34.0	7 847	2.2	1 039 478
Year ended June 1999	38 557	58.1	68 266	34.9	30 949	2.2	3 990 642
Year ended June 2000	40 897	59.0	72 519	35.6	32 397	2.2	4 318 036

(a) Comprising establishments with 15 or more rooms or units (see Explanatory Notes).

2

SUMMARY OF HOLIDAY FLATS, UNITS AND HOUSES—AUSTRALIA

FLATS, UNITS AND HOUSES.

<i>Period</i>	<i>Letting entities(a)</i> no.	<i>Single bedroom</i> no.	<i>Multiple bedroom</i> no.	<i>Total</i> no.	<i>Bed spaces</i> no.	<i>Persons employed(b)</i> no.	<i>Unit nights occupied</i> '000.	<i>Unit occupancy rate</i> %	<i>Unit lettings</i> '000	<i>Average length of stay</i> days	<i>Takings from accommodation</i> \$'000
REAL ESTATE AGENTS											
1997											
March quarter	222	690	13 244	13 934	69 368	—	567	45.3	71	7.9	33 021
June quarter	213	656	12 493	13 149	65 543	—	337	28.3	46	7.2	14 545
2000											
March quarter	197	744	12 790	13 534	68 737	—	570	46.3	77	7.4	37 969
June quarter	190	702	12 284	12 986	67 428	—	377	31.9	61	6.2	20 725
OTHER LETTING ENTITIES											
1997											
March quarter	428	3 743	10 205	13 948	55 777	2 757	786	62.6	159	4.9	63 658
June quarter	435	3 810	10 355	14 165	56 956	2 647	663	51.5	147	4.5	48 796
2000											
March quarter	446	4 132	10 587	14 719	58 458	2 701	819	61.4	171	4.8	68 140
June quarter	445	4 187	10 301	14 488	58 836	2 673	704	53.5	157	4.5	53 232
TOTAL HOLIDAY FLATS, UNITS AND HOUSES											
1997											
March quarter	650	4 433	23 449	27 882	125 145	2 757	1 354	54.0	231	5.9	96 679
June quarter	648	4 466	22 848	27 314	122 499	2 647	999	40.3	193	5.2	63 340
2000											
March quarter	643	4 876	23 377	28 253	127 195	2 701	1 389	54.2	249	5.6	106 110
June quarter	635	4 889	22 585	27 474	126 264	2 673	1 082	43.3	218	5.0	73 957

(a) The number of owners, managers or real estate agents with 15 or more self-contained units (see Explanatory Notes).

(b) Employment numbers exclude real estate agents and their employees.

CAPACITY.....

Period	Establish-ments	On-site vans	Other powered sites	Un-powered sites	Cabins, etc.	Total capacity	Persons employed	Sites occupied by long-term guests	Other sites permanently reserved	Site nights occupied	Site occupancy rate	Takings from accom-odation
	no.	no.	no.	no.	no.	no.	no.	no.	no.	'000	%	\$'000
SHORT-TERM CARAVAN PARKS (b)												
1997												
March quarter	1 185	7 680	116 035	40 556	9 932	174 203	5 485	9 625	42 228	7 520	48.0	84 199
June quarter	1 186	7 453	115 687	40 519	10 020	173 679	5 366	9 548	41 855	6 662	42.2	61 293
2000												
March quarter	1 197	r 8 421	r 114 419	r 34 982	r 14 401	r 172 223	6 122	10 734	r 43 422	r 7 765	r 49.6	r 99 515
June quarter	1 203	7 932	114 403	35 341	15 006	172 682	6 072	11 050	43 367	7 320	46.7	83 508
LONG-TERM CARAVAN PARKS (b)												
1997												
March quarter	704	9 980	51 972	11 674	6 980	80 606	3 017	33 010	2 173	3 901	53.8	47 035
June quarter	701	9 939	51 796	11 797	7 075	80 607	3 038	32 583	2 255	3 875	52.8	46 300
2000												
March quarter	630	10 345	43 266	8 926	9 257	71 794	2 941	28 359	2 498	3 603	55.1	49 310
June quarter	615	8 500	45 762	9 266	9 061	72 589	2 791	28 643	1 734	3 589	54.3	48 764
TOTAL CARAVAN PARKS												
1997												
March quarter	1 889	17 660	168 007	52 230	16 912	254 809	8 502	42 635	44 401	11 421	49.8	131 234
June quarter	1 887	17 392	167 483	52 316	17 095	254 286	8 404	42 131	44 110	10 538	45.5	107 593
2000												
March quarter	1 827	r 18 766	r 157 685	r 43 908	r 23 658	r 244 017	9 063	39 093	r 45 920	r 11 368	r 51.2	r 148 825
June quarter	1 818	16 432	160 165	44 607	24 067	245 271	8 863	39 693	45 101	10 909	48.9	132 272

(a) Comprising establishments with 40 or more powered sites and cabins, etc (see Explanatory Notes).

(b) For definitions of short-term and long-term caravan parks (see Glossary).

4

SUMMARY OF VISITOR HOSTELS (a)—AUSTRALIA

<i>Period</i>	<i>Establishments</i>	<i>Bed spaces</i>	<i>Persons employed</i>	<i>Guest nights</i>	<i>Bed occupancy rate</i>	<i>Guest arrivals</i>	<i>Average length of stay</i>	<i>Takings from accommodation</i>
	no.	no.	no.	no.	%	no.	days	\$'000
1997								
March quarter	388	30 291	1 863	1 313 991	48.9	490 568	2.7	18 498
June quarter	383	29 831	1 899	1 237 166	45.7	464 215	2.7	17 656
2000								
March quarter	478	39 792	3 300	1 810 102	50.4	670 190	2.7	30 664
June quarter	467	39 415	2 855	1 753 161	48.9	658 884	2.7	29 624

(a) Comprising establishments with 25 or more bed spaces (see Explanatory Notes).

5

HOTELS, MOTELS, GUEST HOUSES AND SERVICED APARTMENTS (a)—Australia

STAR GRADING

<i>Period</i>	<i>Licensed hotels with facilities</i>	<i>Motels and guest houses</i>	<i>Serviced apartments</i>	<i>1</i>	<i>2</i>	<i>3</i>	<i>4</i>	<i>5</i>	<i>Ungraded</i>	<i>Total</i>
ESTABLISHMENTS, CAPACITY AND EMPLOYMENT (number)										
June quarter 1999										
Establishments	747	2 398	575	73	561	1 873	725	72	416	3 720
Guest rooms	71 908	84 972	28 423	2 179	16 196	71 033	60 968	18 286	16 641	185 303
Bed spaces	194 135	253 031	99 507	6 742	48 769	213 435	181 015	48 304	48 408	546 673
Persons employed	70 079	30 629	10 183	910	6 549	27 621	39 145	29 741	6 925	110 891
June quarter 2000										
Establishments	768	2 412	625	61	474	1 837	844	88	501	3 805
Guest rooms	74 422	86 091	32 317	1 991	13 761	70 380	66 616	21 572	18 510	192 830
Bed spaces	197 839	254 578	110 055	6 376	40 455	208 942	196 622	56 462	53 615	562 472
Persons employed	72 533	31 341	11 384	749	5 480	27 410	39 171	35 036	7 412	115 258
ROOM NIGHTS OCCUPIED ('000)										
1999										
<i>June quarter</i>	3 902.1	4 080.0	1 445.2	67.1	657.9	3 458.3	3 489.9	1 109.7	644.4	9 427.3
2000										
April	1 418.9	1 466.2	581.6	22.3	202.5	1 226.5	1 298.4	459.1	257.9	3 466.8
May	1 416.2	1 389.9	521.6	20.7	183.6	1 140.6	1 284.5	452.2	246.1	3 327.7
June	1 345.0	1 319.7	540.7	20.2	178.6	1 092.5	1 231.1	428.0	255.0	3 205.5
<i>June quarter</i>	4 180.2	4 175.8	1 643.9	63.2	564.7	3 459.6	3 814.1	1 339.3	759.1	9 999.9
ROOM OCCUPANCY RATES (%)										
1999										
<i>June quarter</i>	60.1	52.9	56.2	34.2	44.7	53.5	63.0	68.2	43.4	56.2
2000										
April	63.9	56.9	60.1	37.4	49.2	58.2	65.0	71.6	46.9	60.1
May	61.6	52.1	52.2	33.5	43.1	52.4	62.3	67.8	43.2	55.8
June	60.4	51.2	55.9	34.1	43.4	51.8	61.7	66.5	46.2	55.5
<i>June quarter</i>	62.0	53.4	56.0	35.0	45.2	54.1	63.0	68.6	45.4	57.1
GUEST NIGHTS ('000)										
1999										
<i>June quarter</i>	6 300.6	7 073.8	3 037.6	109.4	1 187.3	6 248.5	5 997.0	1 786.8	1 082.9	16 412.0
2000										
April	2 377.5	2 698.4	1 316.6	36.4	380.2	2 344.3	2 361.4	783.3	486.9	6 392.5
May	2 152.3	2 267.1	1 030.2	32.7	312.4	1 947.6	2 036.2	695.3	425.5	5 449.6
June	2 144.0	2 249.0	1 135.1	32.7	311.4	1 948.2	2 093.7	677.4	464.6	5 528.0
<i>June quarter</i>	6 673.7	7 214.5	3 481.9	101.8	1 004.0	6 240.1	6 491.3	2 155.9	1 377.0	17 370.1
BED OCCUPANCY RATES (%)										
1999										
<i>June quarter</i>	35.9	30.8	33.8	18.1	26.8	32.2	36.4	41.3	25.1	33.1
2000										
April	40.2	35.4	39.9	19.0	31.4	37.4	40.1	46.6	30.6	38.0
May	35.2	28.8	30.2	16.5	25.0	30.1	33.4	39.8	25.8	31.3
June	36.2	29.5	34.4	17.2	25.7	31.1	35.5	40.2	29.0	32.8
<i>June quarter</i>	37.2	31.2	34.8	17.6	27.3	32.8	36.3	42.2	28.4	34.0

(a) Comprising establishments with 15 or more rooms or units (see Explanatory Notes).

STAR GRADING

Period	Licensed hotels with facilities	Motels and guest houses	Serviced apartments	1	2	3	4	5	Ungraded	Total
GUEST ARRIVALS ('000)										
1999										
June quarter	2 758.8	3 907.2	852.3	57.4	668.3	3 172.7	2 504.0	653.8	461.9	7 518.2
2000										
April	1 022.4	1 475.4	339.0	20.2	218.9	1 168.3	958.4	290.9	180.1	2 836.8
May	965.2	1 256.1	281.5	17.6	182.0	983.7	872.9	280.8	165.7	2 502.8
June	959.7	1 245.6	301.6	18.0	182.0	972.9	884.1	274.0	175.9	2 506.9
June quarter	2 947.3	3 977.2	922.1	55.8	582.9	3 124.9	2 715.4	845.8	521.8	7 846.5
AVERAGE LENGTH OF STAY (days)										
1999										
June quarter	2.3	1.8	3.6	1.9	1.8	2.0	2.4	2.7	2.3	2.2
2000										
June quarter	2.3	1.8	3.8	1.8	1.7	2.0	2.4	2.5	2.6	2.2
TAKINGS FROM ACCOMMODATION (\$'000)										
1999										
June quarter	476 859	316 845	152 662	3 460	39 430	270 210	394 667	186 058	52 541	946 366
2000										
April	181 059	119 503	65 062	1 273	12 340	99 689	150 315	79 392	22 614	365 623
May	178 867	109 739	55 493	1 127	10 596	89 440	145 417	76 751	20 768	344 098
June	166 218	106 379	57 160	1 226	10 596	87 277	138 070	70 369	22 219	329 757
June quarter	526 143	335 620	177 714	3 626	33 532	276 405	433 802	226 512	65 601	1 039 478
AVERAGE TAKINGS PER ROOM NIGHT OCCUPIED (\$) (b)										
1999										
June quarter	122.2	77.7	105.6	51.5	59.9	78.1	113.1	167.7	81.5	100.4
2000										
April	127.6	81.5	111.9	57.1	61.0	81.3	115.8	172.9	87.7	105.5
May	126.3	79.0	106.4	54.5	57.7	78.4	113.2	169.7	84.4	103.4
June	123.6	80.6	105.7	60.6	59.3	79.9	112.1	164.4	87.1	102.9
June quarter	125.9	80.4	108.1	57.4	59.4	79.9	113.7	169.1	86.4	103.9
AVERAGE TAKINGS PER AVAILABLE ROOM NIGHT (\$) (b)										
1999										
June quarter	73.4	41.1	59.4	17.7	26.8	41.8	71.2	114.3	35.4	56.4
2000										
April	81.5	46.4	67.2	21.3	30.0	47.3	75.3	123.8	41.2	63.4
May	77.9	41.2	55.5	18.3	24.9	41.1	70.5	115.1	36.5	57.7
June	74.7	41.2	59.1	20.6	25.8	41.4	69.2	109.3	40.2	57.1
June quarter	78.0	42.9	60.5	20.1	26.9	43.2	71.7	116.1	39.3	59.4

(a) Comprising establishments with 15 or more rooms or units (see Explanatory Notes).

(b) Including bed tax where applicable.

STAR GRADING

<i>Period</i>	<i>Licensed hotels with facilities</i>	<i>Motels and guest houses</i>	<i>Serviced apartments</i>	<i>1</i>	<i>2</i>	<i>3</i>	<i>4</i>	<i>5</i>	<i>Ungraded</i>	<i>Total</i>
ESTABLISHMENTS, CAPACITY AND EMPLOYMENT (number)										
June quarter 1999										
Establishments	173	994	120	35	208	663	186	17	178	1 287
Guest rooms	20 602	33 258	5 484	1 202	5 970	23 148	17 313	4 861	6 850	59 344
Bed spaces	51 920	99 679	19 531	4 201	17 952	68 991	48 723	11 445	19 818	171 130
Persons employed	18 683	11 953	2 071	395	2 083	8 450	11 497	7 888	2 394	32 707
June quarter 2000										
Establishments	185	1 003	126	29	176	697	210	21	181	1 314
Guest rooms	22 815	33 864	6 474	1 099	4 930	25 646	19 268	5 779	6 431	63 153
Bed spaces	56 523	101 295	22 295	3 918	14 777	75 365	53 606	13 340	19 107	180 113
Persons employed	21 304	12 531	2 568	297	1 741	9 708	12 513	9 728	2 416	36 403
ROOM NIGHTS OCCUPIED ('000)										
1999										
<i>June quarter</i>	1 194.1	1 611.1	294.5	33.9	260.2	1 176.1	1 061.6	299.7	268.4	3 099.8
2000										
April	453.0	598.9	118.8	11.0	80.6	472.2	407.0	120.4	79.4	1 170.7
May	457.4	556.6	105.0	9.7	71.9	434.9	406.9	119.1	76.5	1 119.0
June	422.2	509.8	102.2	9.5	66.2	400.9	366.1	110.9	80.6	1 034.2
<i>June quarter</i>	1 332.6	1 665.4	326.0	30.2	218.8	1 308.0	1 180.0	350.4	236.5	3 323.9
ROOM OCCUPANCY RATES (%)										
1999										
<i>June quarter</i>	65.0	53.3	59.6	31.0	48.1	55.9	67.5	73.8	43.5	57.9
2000										
April	67.3	59.0	61.2	33.4	54.5	61.7	70.4	71.0	42.2	62.2
May	65.5	53.0	52.3	28.4	47.1	55.0	68.2	66.5	39.2	57.4
June	62.0	50.2	52.6	29.1	44.8	52.1	63.5	64.0	42.2	54.7
<i>June quarter</i>	64.9	54.1	55.3	30.3	48.8	56.2	67.4	67.1	41.2	58.1
GUEST NIGHTS ('000)										
1999										
<i>June quarter</i>	1 840.2	2 807.5	573.3	57.8	475.6	2 092.3	1 689.8	461.4	444.0	5 221.0
2000										
April	716.9	1 119.0	250.3	18.8	152.9	895.0	689.3	185.9	144.3	2 086.2
May	661.7	913.3	194.0	16.1	124.7	725.8	604.9	168.5	128.9	1 768.9
June	627.8	875.2	198.7	16.2	116.0	696.5	567.0	160.7	145.1	1 701.6
<i>June quarter</i>	2 006.3	2 907.5	643.0	51.1	393.6	2 317.3	1 861.2	515.1	418.4	5 556.8
BED OCCUPANCY RATES (%)										
1999										
<i>June quarter</i>	39.6	31.0	32.7	15.1	29.2	33.3	38.2	47.6	24.9	33.8
2000										
April	42.9	36.9	37.4	16.0	34.5	39.7	42.9	47.1	25.8	38.8
May	38.2	29.1	28.1	13.3	27.2	31.2	36.4	40.7	22.3	31.8
June	37.2	28.8	29.7	13.9	26.2	30.8	35.3	40.2	25.6	31.6
<i>June quarter</i>	39.4	31.6	31.7	14.4	29.3	33.9	38.2	42.6	24.5	34.0

(a) Comprising establishments with 15 or more rooms or units (see Explanatory Notes).

6

HOTELS, MOTELS, GUEST HOUSES AND SERVICED APARTMENTS (a)—NSW *continued*

STAR GRADING

Period	Licensed hotels with facilities	Motels and guest houses	Serviced apartments	1	2	3	4	5	Ungraded	Total
GUEST ARRIVALS ('000)										
1999										
June quarter	804.5	1 634.6	167.6	30.2	264.6	1 153.4	787.7	169.1	201.7	2 606.7
2000										
April	311.6	651.3	74.6	10.7	91.8	480.7	316.3	73.0	64.9	1 037.5
May	298.4	530.4	60.4	9.3	75.6	386.2	287.0	69.8	61.2	889.2
June	284.0	517.6	61.1	9.4	71.1	373.9	277.9	64.1	66.1	862.7
June quarter	894.0	1 699.2	196.1	29.4	238.6	1 240.8	881.3	207.0	192.2	2 789.3
AVERAGE LENGTH OF STAY (days)										
1999										
June quarter	2.3	1.7	3.4	1.9	1.8	1.8	2.1	2.7	2.2	2.0
2000										
June quarter	2.2	1.7	3.3	1.7	1.6	1.9	2.1	2.5	2.2	2.0
TAKINGS FROM ACCOMMODATION (\$'000)										
1999										
June quarter	166 068	128 007	38 752	1 983	15 846	97 694	135 072	59 408	22 826	332 827
2000										
April	65 807	50 464	16 167	697	5 026	40 674	52 874	26 966	6 202	132 438
May	66 355	45 226	14 005	572	4 152	36 753	52 101	26 123	5 886	125 586
June	60 139	42 214	13 628	652	3 866	34 565	46 244	23 860	6 794	115 981
June quarter	192 301	137 903	43 801	1 920	13 043	111 992	151 219	76 949	18 883	374 005
AVERAGE TAKINGS PER ROOM NIGHT OCCUPIED (\$)										
1999										
June quarter	139.1	79.5	131.6	58.5	60.9	83.1	127.2	198.2	85.0	107.4
2000										
April	145.3	84.3	136.1	63.2	62.3	86.1	129.9	224.0	78.1	113.1
May	145.1	81.3	133.4	59.1	57.7	84.5	128.0	219.4	77.0	112.2
June	142.4	82.8	133.4	68.6	58.4	86.2	126.3	215.1	84.3	112.1
June quarter	144.3	82.8	134.4	63.6	59.6	85.6	128.2	219.6	79.8	112.5
AVERAGE TAKINGS PER AVAILABLE ROOM NIGHT (\$) (b)										
1999										
June quarter	90.4	42.4	78.4	18.1	29.3	46.4	85.9	146.3	37.0	62.2
2000										
April	97.7	49.7	83.2	21.1	34.0	53.1	91.5	159.0	33.0	70.4
May	95.0	43.1	69.8	16.8	27.2	46.5	87.3	145.8	30.2	64.5
June	88.2	41.6	70.2	20.0	26.1	44.9	80.3	137.6	35.5	61.3
June quarter	93.7	44.8	74.3	19.3	29.1	48.2	86.4	147.4	32.9	65.4

(a) Comprising establishments with 15 or more rooms or units (see Explanatory Notes).

(b) Including bed tax where applicable.

7

HOTELS, MOTELS, GUEST HOUSES AND SERVICED APARTMENTS (a)—Vic.

STAR GRADING

Period	Licensed hotels with facilities	Motels and guest houses	Serviced apartments	1	2	3	4	5	Ungraded	Total
ESTABLISHMENTS, CAPACITY AND EMPLOYMENT (number)										
June quarter 1999										
Establishments	121	507	70	11	94	391	152	10	40	698
Guest rooms	10 766	16 214	3 786	241	2 519	12 473	10 924	2 980	1 629	30 766
Bed spaces	26 198	47 459	11 590	651	7 873	35 796	29 400	6 622	4 905	85 247
Persons employed	14 406	5 822	1 497	155	934	4 549	6 495	8 715	877	21 725
June quarter 2000										
Establishments	125	504	76	8	77	354	175	14	77	705
Guest rooms	10 906	16 306	4 172	270	2 129	11 210	11 539	3 400	2 836	31 384
Bed spaces	26 244	47 317	12 811	776	6 402	31 950	30 409	7 633	9 202	86 372
Persons employed	13 957	5 879	1 750	81	790	4 210	6 716	8 639	1 150	21 586
ROOM NIGHTS OCCUPIED ('000)										
1999										
June quarter	600.1	720.5	225.0	6.9	85.2	568.1	644.2	186.0	55.2	1 545.6
2000										
April	215.0	268.9	87.1	3.8	29.7	186.2	227.5	72.2	51.6	571.1
May	223.1	246.1	84.0	3.3	23.0	167.9	236.1	75.4	47.4	553.2
June	201.1	219.4	84.2	2.8	21.7	148.8	216.4	67.3	47.6	504.7
June quarter	639.2	734.4	255.4	9.8	74.4	503.0	680.0	215.0	146.6	1 628.9
ROOM OCCUPANCY RATES (%)										
1999										
June quarter	61.4	49.1	65.7	31.4	37.2	50.1	65.0	68.6	39.4	55.4
2000										
April	65.8	55.0	69.6	46.4	46.5	55.4	65.8	70.8	60.7	60.7
May	66.1	48.7	65.0	38.8	35.1	48.3	66.1	71.6	53.9	56.9
June	61.5	45.0	67.3	34.9	34.3	44.4	62.5	66.0	55.9	53.7
June quarter	64.5	49.6	67.3	40.0	38.6	49.4	64.8	69.5	56.8	57.1
GUEST NIGHTS ('000)										
1999										
June quarter	918.2	1 220.7	396.4	11.5	159.7	981.4	1 026.3	265.9	90.4	2 535.3
2000										
April	325.7	490.3	165.1	5.4	58.2	342.8	365.6	106.0	103.2	981.1
May	314.2	399.5	142.1	4.4	41.7	280.1	338.0	104.9	86.6	855.8
June	298.1	370.5	150.5	3.8	39.7	261.1	325.7	96.7	92.0	819.1
June quarter	938.0	1 260.3	457.7	13.6	139.7	884.0	1 029.4	307.5	281.8	2 655.9
BED OCCUPANCY RATES (%)										
1999										
June quarter	38.6	28.4	37.9	19.5	22.3	30.1	38.4	44.1	21.6	32.8
2000										
April	41.4	34.5	43.0	23.0	30.3	35.8	40.1	46.3	37.4	37.9
May	38.7	27.3	35.8	18.2	21.1	28.3	35.9	44.3	30.3	32.0
June	37.9	26.2	39.2	16.4	20.9	27.3	35.7	42.2	33.3	31.7
June quarter	39.3	29.3	39.3	19.2	24.1	30.4	37.2	44.3	33.7	33.8

(a) Comprising establishments with 15 or more rooms or units (see Explanatory Notes).

7

HOTELS, MOTELS, GUEST HOUSES AND SERVICED APARTMENTS (a)—Vic. *continued*

STAR GRADING

Period	Licensed hotels with facilities	Motels and guest houses	Serviced apartments	1	2	3	4	5	Ungraded	Total
GUEST ARRIVALS ('000)										
1999										
June quarter	413.3	700.1	124.5	7.0	102.0	514.0	463.9	114.3	36.8	1 238.0
2000										
April	147.1	278.6	46.9	3.5	35.7	185.3	173.7	45.2	29.2	472.6
May	145.8	231.0	42.1	2.6	25.6	153.6	164.9	46.7	25.4	418.9
June	142.8	215.8	45.3	2.6	24.9	144.6	161.4	43.1	27.4	403.9
June quarter	435.8	725.4	134.3	8.7	86.2	483.5	500.0	135.1	82.1	1 295.5
AVERAGE LENGTH OF STAY (days)										
1999										
June quarter	2.2	1.7	3.2	1.6	1.6	1.9	2.2	2.3	2.5	2.0
2000										
June quarter	2.2	1.7	3.4	1.6	1.6	1.8	2.1	2.3	3.4	2.1
TAKINGS FROM ACCOMMODATION (\$'000)										
1999										
June quarter	82 517	59 300	28 312	373	4 913	44 637	77 500	36 261	6 446	170 130
2000										
April	29 704	22 866	11 545	204	1 792	14 541	27 062	13 936	6 580	64 115
May	31 426	20 511	11 265	184	1 343	12 619	28 460	14 594	6 002	63 202
June	28 004	18 886	11 125	165	1 314	11 720	25 917	12 899	6 000	58 015
June quarter	89 135	62 263	33 935	554	4 449	38 880	81 439	41 429	18 582	185 332
AVERAGE TAKINGS PER ROOM NIGHT OCCUPIED (\$)										
1999										
June quarter	137.5	82.3	125.8	54.3	57.6	78.6	120.3	195.0	116.8	110.1
2000										
April	138.1	85.0	132.5	54.4	60.3	78.1	119.0	192.9	127.4	112.3
May	140.9	83.3	134.1	56.7	58.3	75.1	120.5	193.4	126.6	114.2
June	139.3	86.1	132.1	58.3	60.6	78.8	119.8	191.6	126.1	115.0
June quarter	139.5	84.8	132.9	56.3	59.8	77.3	119.8	192.7	126.7	113.8
AVERAGE TAKINGS PER AVAILABLE ROOM NIGHT (\$)										
1999										
June quarter	84.4	40.4	82.6	17.0	21.4	39.3	78.2	133.7	46.0	61.0
2000										
April	90.9	46.7	92.2	25.2	28.1	43.2	78.3	136.6	77.3	68.1
May	93.1	40.6	87.1	22.0	20.4	36.3	79.7	138.5	68.3	65.0
June	85.6	38.7	88.9	20.4	20.8	35.0	74.9	126.5	70.5	61.7
June quarter	89.9	42.0	89.4	22.5	23.1	38.2	77.6	133.9	72.0	65.0

(a) Comprising establishments with 15 or more rooms or units (see Explanatory Notes).

STAR GRADING

<i>Period</i>	<i>Licensed hotels with facilities</i>	<i>Motels and guest houses</i>	<i>Serviced apartments</i>	<i>1</i>	<i>2</i>	<i>3</i>	<i>4</i>	<i>5</i>	<i>Ungraded</i>	<i>Total</i>
ESTABLISHMENTS, CAPACITY AND EMPLOYMENT (number)										
June quarter 1999										
Establishments	171	512	241	14	128	441	237	26	78	924
Guest rooms	20 622	18 363	11 902	386	3 372	16 502	20 541	6 221	3 865	50 887
Bed spaces	64 333	55 307	42 893	983	10 478	53 353	66 104	19 274	12 341	162 533
Persons employed	20 339	6 482	3 939	131	1 519	6 263	12 731	8 421	1 695	30 760
June quarter 2000										
Establishments	171	511	265	10	100	410	284	31	112	947
Guest rooms	20 514	18 383	13 248	251	2 474	15 080	21 521	7 961	4 858	52 145
Bed spaces	62 895	54 686	45 739	715	7 455	48 007	68 738	24 682	13 723	163 320
Persons employed	20 531	6 512	4 098	119	1 158	5 743	10 699	11 640	1 782	31 141
ROOM NIGHTS OCCUPIED ('000)										
1999										
<i>June quarter</i>	1 090.6	955.8	539.8	15.5	149.8	839.1	1 075.0	361.3	145.5	2 586.2
2000										
April	386.7	306.3	215.7	3.2	33.1	254.1	377.6	171.0	69.7	908.7
May	370.9	307.0	182.6	3.5	31.9	244.8	356.1	160.2	64.0	860.5
June	378.3	322.4	207.3	3.5	34.1	264.7	383.2	151.6	70.9	908.0
<i>June quarter</i>	1 135.9	935.7	605.6	10.2	99.1	763.7	1 116.9	482.7	204.6	2 677.2
ROOM OCCUPANCY RATES (%)										
1999										
<i>June quarter</i>	58.3	57.3	50.3	47.2	48.9	56.0	57.5	63.8	42.8	56.1
2000										
April	62.9	55.5	54.3	42.4	44.8	56.2	58.5	71.6	47.8	58.1
May	58.4	53.9	44.5	44.9	41.9	52.4	53.4	64.9	42.5	53.3
June	61.9	58.5	52.3	46.9	46.4	58.5	59.3	64.5	49.0	58.2
<i>June quarter</i>	61.0	55.9	50.3	44.7	44.4	55.6	57.0	67.0	46.4	56.5
GUEST NIGHTS ('000)										
1999										
<i>June quarter</i>	2 020.7	1 686.9	1 287.3	23.5	268.9	1 621.6	2 121.2	687.0	272.7	4 994.9
2000										
April	753.0	567.5	554.2	5.7	63.1	520.2	804.2	343.0	138.5	1 874.7
May	645.5	504.8	415.2	6.1	55.2	442.4	656.9	286.8	118.0	1 565.5
June	700.5	556.5	487.5	6.5	60.5	499.8	767.9	277.2	132.7	1 744.5
<i>June quarter</i>	2 099.1	1 628.8	1 456.8	18.2	178.8	1 462.4	2 229.0	907.0	389.2	5 184.7
BED OCCUPANCY RATES (%)										
1999										
<i>June quarter</i>	34.6	33.6	33.3	28.8	28.2	33.5	35.3	39.2	25.2	33.9
2000										
April	39.9	34.6	40.4	26.4	28.3	36.1	39.0	46.3	33.6	38.3
May	33.1	29.8	29.3	27.6	24.1	29.7	30.8	37.5	27.8	30.9
June	37.3	33.9	35.6	30.1	27.2	34.7	37.2	37.8	32.4	35.7
<i>June quarter</i>	36.8	32.7	35.0	28.0	26.5	33.5	35.6	40.5	31.2	34.9

(a) Comprising establishments with 15 or more rooms or units (see Explanatory Notes).

STAR GRADING

Period	Licensed hotels with facilities	Motels and guest houses	Serviced apartments	1	2	3	4	5	Ungraded	Total
GUEST ARRIVALS ('000)										
1999										
June quarter	758.6	831.6	307.1	11.1	141.1	708.5	728.7	209.3	98.6	1 897.3
2000										
April	273.8	275.0	114.8	2.4	35.9	215.9	257.0	111.3	41.1	663.6
May	252.0	253.2	91.9	2.5	33.0	191.9	228.6	103.0	38.1	597.1
June	269.6	276.4	104.1	2.8	35.5	213.4	254.2	102.4	41.8	650.1
June quarter	795.4	804.6	310.8	7.7	104.3	621.2	739.8	316.8	121.0	1 910.9
AVERAGE LENGTH OF STAY (days)										
1999										
June quarter	2.7	2.0	4.2	2.1	1.9	2.3	2.9	3.3	2.8	2.6
2000										
June quarter	2.6	2.0	4.7	2.4	1.7	2.4	3.0	2.9	3.2	2.7
TAKINGS FROM ACCOMMODATION (\$'000)										
1999										
June quarter	124 068	66 741	48 165	592	8 717	59 011	103 628	55 189	11 839	238 974
2000										
April	46 501	22 731	20 646	148	1 913	19 084	37 775	25 184	5 775	89 878
May	42 336	21 964	15 731	156	1 697	17 054	33 436	22 746	4 944	80 032
June	41 695	23 352	17 799	161	1 888	18 702	36 333	20 212	5 550	82 847
June quarter	130 533	68 048	54 176	465	5 498	54 840	107 543	68 141	16 268	252 757
AVERAGE TAKINGS PER ROOM NIGHT OCCUPIED (\$)										
1999										
June quarter	113.8	69.8	89.2	38.1	58.2	70.3	96.4	152.8	81.4	92.4
2000										
April	120.2	74.2	95.7	46.3	57.7	75.1	100.0	147.3	82.9	98.9
May	114.2	71.5	86.1	44.6	53.2	69.7	93.9	142.0	77.2	93.0
June	110.2	72.4	85.9	45.7	55.3	70.7	94.8	133.3	78.3	91.2
June quarter	114.9	72.7	89.5	45.5	55.5	71.8	96.3	141.2	79.5	94.4
AVERAGE TAKINGS PER AVAILABLE ROOM NIGHT (\$)										
1999										
June quarter	66.3	40.0	44.9	18.0	28.4	39.4	55.4	97.5	34.9	51.8
2000										
April	75.6	41.2	51.9	19.6	25.9	42.2	58.5	105.4	39.6	57.5
May	66.6	38.5	38.3	20.0	22.3	36.5	50.1	92.2	32.8	49.5
June	68.2	42.3	44.9	21.4	25.7	41.3	56.3	85.9	38.3	53.1
June quarter	70.1	40.7	45.0	20.4	24.6	40.0	54.9	94.5	36.9	53.3

(a) Comprising establishments with 15 or more rooms or units (see Explanatory Notes).

STAR GRADING

Period	Licensed hotels with facilities	Motels and guest houses	Serviced apartments	1	2	3	4	5	Ungraded	Total
ESTABLISHMENTS, CAPACITY AND EMPLOYMENT (number)										
June quarter 1999										
Establishments	62	146	22	5	51	125	38	4	7	230
Guest rooms	4 095	5 189	889	129	1 481	4 776	2 361	1 263	163	10 173
Bed spaces	10 262	15 892	2 974	348	4 136	14 037	7 505	2 658	444	29 128
Persons employed	4 045	1 979	341	111	785	2 393	1 611	1 320	145	6 365
June quarter 2000										
Establishments	60	147	26	6	52	117	44	4	10	233
Guest rooms	4 037	5 212	1 208	146	1 501	4 470	2 799	1 263	278	10 457
Bed spaces	10 070	15 760	4 342	380	4 222	13 089	9 026	2 588	867	30 172
Persons employed	3 910	1 954	479	141	677	2 220	1 871	1 306	128	6 343
ROOM NIGHTS OCCUPIED ('000)										
1999										
June quarter	218.4	243.2	43.7	3.9	52.5	224.2	134.4	84.2	6.1	505.3
2000										
April	76.2	94.7	26.3	1.4	20.7	83.2	57.3	30.1	4.5	197.2
May	72.8	84.2	22.5	1.2	18.1	75.1	52.4	29.0	3.8	179.5
June	66.7	72.9	20.1	1.0	16.0	65.6	45.8	27.2	4.0	159.8
June quarter	215.7	251.9	68.9	3.6	54.8	223.9	155.5	86.3	12.4	536.4
ROOM OCCUPANCY RATES (%)										
1999										
June quarter	58.6	51.5	54.1	33.6	38.9	51.6	62.5	73.3	41.0	54.6
2000										
April	62.9	60.6	72.5	31.3	46.0	62.0	68.2	79.5	54.1	62.9
May	58.2	52.1	60.0	26.2	38.8	54.2	60.4	74.1	44.0	55.4
June	55.1	46.6	55.5	23.7	35.6	48.9	54.6	71.8	48.5	50.9
June quarter	58.7	53.1	62.7	27.1	40.1	55.0	61.0	75.1	48.8	56.4
GUEST NIGHTS ('000)										
1999										
June quarter	320.7	410.6	88.1	6.5	86.4	392.6	215.4	109.8	8.8	819.5
2000										
April	120.7	172.6	55.1	2.4	37.6	153.3	103.7	41.8	9.7	348.5
May	103.1	136.9	42.0	1.8	30.7	123.9	81.7	36.0	7.9	282.0
June	97.0	119.2	38.5	1.7	26.9	110.0	73.5	34.5	8.1	254.7
June quarter	320.9	428.7	135.6	5.9	95.2	387.2	258.9	112.3	25.7	885.2
BED OCCUPANCY RATES (%)										
1999										
June quarter	34.3	28.4	32.6	20.4	23.0	30.7	31.5	45.4	21.7	30.9
2000										
April	40.0	36.5	42.3	20.9	29.7	39.0	38.3	53.8	37.1	38.5
May	33.0	28.0	31.2	15.3	23.5	30.5	29.2	44.8	29.4	30.1
June	32.1	25.2	29.6	14.9	21.2	28.0	27.2	44.5	31.3	28.1
June quarter	35.0	29.9	34.3	17.0	24.8	32.5	31.5	47.7	32.6	32.2

(a) Comprising establishments with 15 or more rooms or units (see Explanatory Notes).

STAR GRADING

<i>Period</i>	<i>Licensed hotels with facilities</i>	<i>Motels and guest houses</i>	<i>Serviced apartments</i>	<i>1</i>	<i>2</i>	<i>3</i>	<i>4</i>	<i>5</i>	<i>Ungraded</i>	<i>Total</i>
GUEST ARRIVALS ('000)										
1999										
<i>June quarter</i>	165.3	238.7	30.8	3.5	51.6	222.6	104.5	48.6	4.1	434.9
2000										
April	57.3	93.5	15.1	1.3	20.7	80.6	42.3	18.1	3.0	166.0
May	53.5	78.5	14.0	1.0	17.3	69.3	38.4	17.7	2.3	146.0
June	51.8	70.4	11.8	0.9	15.9	62.3	35.0	17.2	2.6	134.0
<i>June quarter</i>	162.6	242.5	40.9	3.3	53.9	212.2	115.7	53.0	7.9	446.0
AVERAGE LENGTH OF STAY (days)										
1999										
<i>June quarter</i>	1.9	1.7	2.9	1.9	1.7	1.8	2.1	2.3	2.1	1.9
2000										
<i>June quarter</i>	2.0	1.8	3.3	1.8	1.8	1.8	2.2	2.1	3.2	2.0
TAKINGS FROM ACCOMMODATION (\$'000)										
1999										
<i>June quarter</i>	22 362	18 140	3 947	143	2 605	15 893	14 238	11 305	264	44 448
2000										
April	8 327	7 391	2 724	61	1 109	6 275	6 430	4 255	312	18 443
May	7 734	6 384	2 216	47	946	5 464	5 642	3 983	252	16 334
June	6 972	5 534	1 971	44	865	4 765	4 929	3 615	258	14 477
<i>June quarter</i>	23 033	19 309	6 912	152	2 921	16 504	17 001	11 854	823	49 254
AVERAGE TAKINGS PER ROOM NIGHT OCCUPIED (\$)										
1999										
<i>June quarter</i>	102.4	74.6	90.3	36.3	49.7	70.9	106.0	134.3	43.3	88.0
2000										
April	109.3	78.0	103.6	44.7	53.6	75.4	112.3	141.2	69.2	93.5
May	106.2	75.8	98.7	39.3	52.4	72.7	107.7	137.4	66.4	91.0
June	104.6	75.9	97.9	42.1	54.0	72.6	107.5	132.8	63.8	90.6
<i>June quarter</i>	106.8	76.7	100.3	42.2	53.3	73.7	109.4	137.3	66.6	91.8
AVERAGE TAKINGS PER AVAILABLE ROOM NIGHT (\$)										
1999										
<i>June quarter</i>	60.0	38.4	48.8	12.2	19.3	36.6	66.3	98.4	17.8	48.0
2000										
April	68.8	47.3	75.2	14.0	24.6	46.8	76.6	112.3	37.5	58.8
May	61.8	39.5	59.2	10.3	20.3	39.4	65.0	101.7	29.2	50.4
June	57.6	35.4	54.4	10.0	19.2	35.5	58.7	95.4	31.0	46.1
<i>June quarter</i>	62.7	40.7	62.9	11.4	21.4	40.6	66.7	103.1	32.5	51.8

(a) Comprising establishments with 15 or more rooms or units (see Explanatory Notes).

STAR GRADING

<i>Period</i>	<i>Licensed hotels with facilities</i>	<i>Motels and guest houses</i>	<i>Serviced apartments</i>	<i>1</i>	<i>2</i>	<i>3</i>	<i>4</i>	<i>5</i>	<i>Ungraded</i>	<i>Total</i>
ESTABLISHMENTS, CAPACITY AND EMPLOYMENT (number)										
June quarter 1999										
Establishments	128	116	64	4	33	128	52	11	80	308
Guest rooms	9 166	5 455	3 162	91	995	7 230	4 597	2 186	2 684	17 783
Bed spaces	23 274	14 815	11 630	224	2 530	20 080	13 254	6 563	7 068	49 719
Persons employed	6 636	2 061	1 088	52	542	2 838	2 809	2 206	1 338	9 785
June quarter 2000										
Establishments	134	122	69	3	26	131	64	14	87	325
Guest rooms	9 476	5 770	3 712	66	946	7 361	5 350	2 394	2 841	18 958
Bed spaces	23 729	15 575	12 789	159	2 359	20 239	15 654	6 516	7 166	52 093
Persons employed	6 939	2 058	1 212	43	472	2 720	2 813	2 625	1 536	10 209
ROOM NIGHTS OCCUPIED ('000)										
1999										
<i>June quarter</i>	465.8	243.0	152.9	1.8	38.8	317.6	266.4	131.8	105.3	861.7
2000										
April	166.5	86.8	64.4	0.8	12.0	115.3	103.3	50.0	36.4	317.8
May	168.9	84.5	55.5	0.7	12.3	108.1	100.4	50.8	36.6	308.9
June	164.9	85.1	57.3	0.5	13.4	110.5	99.2	50.9	32.8	307.3
<i>June quarter</i>	500.3	256.5	177.2	2.0	37.8	333.8	302.9	151.7	105.8	934.0
ROOM OCCUPANCY RATES (%)										
1999										
<i>June quarter</i>	55.9	48.9	53.2	21.6	42.8	48.3	63.7	66.3	43.1	53.3
2000										
April	58.6	50.9	58.8	41.9	42.4	52.2	65.1	71.9	42.7	56.3
May	57.5	47.7	49.0	35.1	42.1	47.4	61.2	70.1	41.5	52.9
June	58.0	49.2	51.8	24.7	47.3	50.0	62.1	70.9	38.4	54.1
<i>June quarter</i>	58.0	49.2	53.2	33.9	43.9	49.8	62.8	70.9	40.9	54.4
GUEST NIGHTS ('000)										
1999										
<i>June quarter</i>	680.3	407.1	341.1	2.8	70.8	553.8	438.2	196.1	166.7	1 428.5
2000										
April	260.4	150.5	152.3	1.2	20.9	208.4	185.5	85.2	62.0	563.2
May	239.8	129.1	107.2	1.0	18.2	175.5	153.1	75.4	53.0	476.1
June	246.2	137.8	120.0	0.7	20.0	188.0	164.7	81.4	49.2	504.0
<i>June quarter</i>	746.4	417.4	379.5	2.8	59.0	571.9	503.2	242.0	164.2	1 543.3
BED OCCUPANCY RATES (%)										
1999										
<i>June quarter</i>	32.1	30.2	32.2	13.7	30.8	30.3	36.3	32.8	25.9	31.6
2000										
April	36.6	32.6	40.2	25.0	29.5	34.3	39.9	44.9	28.8	36.3
May	32.6	27.0	27.4	19.4	24.9	28.0	31.9	38.1	23.8	29.7
June	34.6	29.5	31.5	13.9	28.3	31.0	35.2	41.6	22.9	32.3
<i>June quarter</i>	34.6	29.7	33.0	19.4	27.5	31.1	35.6	41.5	25.2	32.7

(a) Comprising establishments with 15 or more rooms or units (see Explanatory Notes).

STAR GRADING

Period	Licensed hotels with facilities	Motels and guest houses	Serviced apartments	1	2	3	4	5	Ungraded	Total
GUEST ARRIVALS ('000)										
1999										
June quarter	333.8	196.1	94.7	2.0	33.8	250.0	178.3	82.0	78.6	624.7
2000										
April	116.0	70.0	42.6	0.8	10.4	87.2	68.9	31.2	30.2	228.6
May	109.0	62.1	31.5	0.5	9.0	77.8	59.8	30.1	25.4	202.6
June	113.4	62.5	36.1	0.5	9.8	81.0	65.7	31.1	23.9	212.0
June quarter	338.4	194.6	110.1	1.8	29.2	246.0	194.3	92.3	79.5	643.2
AVERAGE LENGTH OF STAY (days)										
1999										
June quarter	2.0	2.1	3.6	1.4	2.1	2.2	2.5	2.4	2.1	2.3
2000										
June quarter	2.2	2.1	3.4	1.6	2.0	2.3	2.6	2.6	2.1	2.4
TAKINGS FROM ACCOMMODATION (\$'000)										
1999										
June quarter	47 157	19 361	14 863	93	2 670	24 306	29 876	17 792	6 644	81 380
2000										
April	17 227	6 694	6 873	38	848	8 972	11 539	6 971	2 426	30 795
May	17 244	6 290	5 018	27	812	7 976	10 707	6 836	2 194	28 552
June	16 750	6 820	5 201	28	898	8 325	10 547	7 044	1 930	28 771
June quarter	51 221	19 804	17 093	93	2 557	25 273	32 793	20 852	6 550	88 118
AVERAGE TAKINGS PER ROOM NIGHT OCCUPIED (\$)										
1999										
June quarter	101.2	79.7	97.2	52.2	68.8	76.5	112.1	135.0	63.1	94.4
2000										
April	103.5	77.1	106.7	45.6	70.4	77.8	111.7	139.5	66.7	96.9
May	102.1	74.4	90.4	38.3	65.8	73.8	106.6	134.6	60.0	92.4
June	101.6	80.1	90.8	56.4	66.9	75.4	106.3	138.3	58.9	93.6
June quarter	102.4	77.2	96.5	45.6	67.6	75.7	108.3	137.5	61.9	94.3
AVERAGE TAKINGS PER AVAILABLE ROOM NIGHT (\$)										
1999										
June quarter	56.5	39.0	51.7	11.3	29.5	37.0	71.4	89.4	27.2	50.3
2000										
April	60.6	39.2	62.7	19.1	29.9	40.6	72.7	100.4	28.5	54.5
May	58.7	35.5	44.3	13.4	27.7	35.0	65.3	94.3	24.9	48.9
June	58.9	39.4	47.1	13.9	31.6	37.7	66.1	98.1	22.6	50.7
June quarter	59.4	38.0	51.3	15.5	29.7	37.7	68.0	97.5	25.3	51.3

(a) Comprising establishments with 15 or more rooms or units (see Explanatory Notes).

STAR GRADING

Period	Licensed hotels with facilities	Motels and guest houses	Serviced apartments	1 and ungraded	2	3	4 and 5	Total
ESTABLISHMENTS, CAPACITY AND EMPLOYMENT (number)								
June quarter 1999								
Establishments	54	51	24	8	17	71	33	129
Guest rooms	2 900	1 746	864	247	473	2 607	2 183	5 510
Bed spaces	7 950	5 444	3 386	557	1 260	8 270	6 693	16 780
Persons employed	2 725	608	378	79	245	1 174	2 213	3 711
June quarter 2000								
Establishments	55	51	25	8	16	74	33	131
Guest rooms	2 871	1 749	876	247	441	2 714	2 094	5 496
Bed spaces	7 870	5 420	3 317	540	1 130	8 452	6 485	16 607
Persons employed	2 813	671	437	75	222	1 293	2 331	3 921
ROOM NIGHTS OCCUPIED ('000)								
1999								
June quarter	127.1	72.1	39.5	5.1	13.7	106.3	113.5	238.6
2000								
April	47.2	30.8	18.3	1.7	4.8	48.2	41.6	96.2
May	46.9	25.3	14.9	1.8	4.2	37.7	43.4	87.1
June	34.5	18.3	12.3	1.3	3.4	28.0	32.4	65.1
June quarter	128.5	74.5	45.5	4.7	12.4	114.0	117.4	248.5
ROOM OCCUPANCY RATES (%)								
1999								
June quarter	48.1	45.4	50.2	22.6	31.9	44.8	57.2	47.6
2000								
April	54.8	58.7	69.5	22.5	36.4	59.2	66.1	58.4
May	52.7	46.7	55.0	23.3	30.8	44.8	66.9	51.1
June	40.0	35.0	46.8	17.0	25.5	34.4	51.6	39.5
June quarter	49.2	46.8	57.1	21.0	30.9	46.1	61.6	49.7
GUEST NIGHTS ('000)								
1999								
June quarter	207.1	134.9	82.8	8.6	20.1	208.1	188.1	424.9
2000								
April	79.7	60.3	42.1	3.2	7.1	97.9	74.0	182.1
May	71.7	44.2	29.3	3.0	5.6	68.7	67.9	145.2
June	54.3	33.2	26.8	2.2	4.6	54.5	53.0	114.4
June quarter	205.7	137.8	98.1	8.3	17.3	221.1	194.9	441.6
BED OCCUPANCY RATES (%)								
1999								
June quarter	28.6	27.2	26.9	16.9	17.5	27.7	30.9	27.8
2000								
April	33.8	37.1	42.3	19.6	20.8	38.6	38.0	36.6
May	29.4	26.3	28.5	17.7	15.9	26.2	33.8	28.2
June	23.0	20.4	26.9	13.4	13.7	21.5	27.2	23.0
June quarter	28.7	27.9	32.5	16.9	16.8	28.7	33.0	29.2

(a) Comprising establishments with 15 or more rooms or units (see Explanatory Notes).

STAR GRADING

Period	Licensed hotels with facilities	Motels and guest houses	Serviced apartments	1 and ungraded	2	3	4 and 5	Total
GUEST ARRIVALS ('000)								
1999								
June quarter	115.1	78.2	40.9	4.4	12.6	118.8	98.4	234.2
2000								
April	46.7	34.4	17.1	1.5	4.2	56.1	36.4	98.1
May	38.6	24.7	12.2	1.4	2.9	38.8	32.4	75.4
June	29.4	18.0	11.0	0.8	2.5	29.4	25.7	58.4
June quarter	114.7	77.1	40.2	3.6	9.6	124.3	94.5	232.0
AVERAGE LENGTH OF STAY (days)								
1999								
June quarter	1.8	1.7	2.0	1.9	1.6	1.8	1.9	1.8
2000								
June quarter	1.8	1.8	2.4	2.3	1.8	1.8	2.1	1.9
TAKINGS FROM ACCOMMODATION (\$'000)								
1999								
June quarter	10 658	5 516	3 952	301	559	7 506	11 759	20 125
2000								
April	3 988	2 522	1 944	120	219	3 571	4 544	8 454
May	4 131	1 967	1 488	110	178	2 643	4 654	7 586
June	2 978	1 391	1 293	93	131	1 984	3 454	5 662
June quarter	11 098	5 880	4 724	323	528	8 198	12 652	21 702
AVERAGE TAKINGS PER ROOM NIGHT OCCUPIED (\$)								
1999								
June quarter	83.9	76.5	100.1	59.4	40.7	70.6	103.6	84.3
2000								
April	84.5	81.9	106.4	71.8	45.5	74.1	109.4	87.8
May	88.2	77.6	99.6	61.8	42.2	70.1	107.2	87.1
June	86.4	75.8	105.2	73.7	38.6	70.8	106.5	87.0
June quarter	86.4	79.0	103.8	68.5	42.5	71.9	107.8	87.3
AVERAGE TAKINGS PER AVAILABLE ROOM NIGHT (\$)								
1999								
June quarter	40.4	34.7	50.3	13.4	13.0	31.6	59.2	40.1
2000								
April	46.3	48.1	74.0	16.2	16.6	43.9	72.3	51.3
May	46.4	36.3	54.8	14.4	13.0	31.4	71.7	44.5
June	34.6	26.5	49.2	12.5	9.9	24.4	55.0	34.3
June quarter	42.5	36.9	59.3	14.4	13.1	33.2	66.4	43.4

(a) Comprising establishments with 15 or more rooms or units (see Explanatory Notes).

STAR GRADING

<i>Period</i>	<i>Licensed hotels with facilities</i>	<i>Motels and guest houses</i>	<i>Serviced apartments</i>	<i>1 and Ungraded</i>	<i>2</i>	<i>3</i>	<i>4 and 5</i>	<i>Total</i>
ESTABLISHMENTS, CAPACITY AND EMPLOYMENT (number)								
June quarter 1999								
Establishments	24	48	17	19	23	32	15	89
Guest rooms	1 989	3 046	1 119	595	982	2 567	2 010	6 154
Bed spaces	5 640	9 055	3 267	1 707	2 905	7 721	5 629	17 962
Persons employed	1 927	1 173	451	258	337	1 298	1 658	3 551
June quarter 2000								
Establishments	23	49	18	21	19	34	16	90
Guest rooms	1 902	3 127	1 176	654	780	2 499	2 272	6 205
Bed spaces	5 416	9 346	3 850	1 874	2 344	7 478	6 916	18 612
Persons employed	1 788	1 182	423	257	260	1 054	1 822	3 393
ROOM NIGHTS OCCUPIED ('000)								
1999								
<i>June quarter</i>	105.1	156.0	69.4	24.3	40.7	141.6	124.0	330.5
2000								
April	34.9	49.8	21.1	8.1	10.6	41.1	46.0	105.8
May	36.3	57.3	25.3	9.8	12.8	46.3	50.0	118.9
June	39.5	62.5	27.9	12.0	14.3	49.4	54.1	129.9
<i>June quarter</i>	110.7	169.6	74.3	30.0	37.8	136.8	150.1	354.6
ROOM OCCUPANCY RATES (%)								
1999								
<i>June quarter</i>	58.5	56.6	68.2	47.4	45.5	60.6	67.8	59.3
2000								
April	61.1	54.3	59.9	43.6	47.6	54.8	67.5	57.5
May	61.6	59.1	69.3	48.5	52.9	59.7	71.0	61.8
June	69.2	66.7	79.1	61.3	61.3	65.9	79.4	69.8
<i>June quarter</i>	63.9	60.0	69.4	51.3	54.0	60.1	72.6	63.0
GUEST NIGHTS ('000)								
1999								
<i>June quarter</i>	163.0	274.3	134.4	41.3	70.4	256.7	203.4	571.8
2000								
April	60.5	85.1	41.1	13.9	19.3	77.1	76.3	186.6
May	59.7	92.7	47.0	17.0	20.5	83.9	78.0	199.4
June	66.6	104.4	58.7	22.7	25.2	92.1	89.8	229.7
<i>June quarter</i>	186.8	282.1	146.9	53.6	65.0	253.1	244.1	615.8
BED OCCUPANCY RATES (%)								
1999								
<i>June quarter</i>	32.1	33.5	45.2	28.6	26.6	36.5	39.7	35.2
2000								
April	37.2	30.8	35.6	25.8	28.3	34.4	36.8	33.7
May	35.5	32.0	39.4	29.3	28.2	36.2	36.4	34.6
June	41.0	37.2	50.8	40.3	35.9	41.0	43.3	41.1
<i>June quarter</i>	37.9	33.3	41.9	31.8	30.8	37.2	38.8	36.5

(a) Comprising establishments with 15 or more rooms or units (see Explanatory Notes).

STAR GRADING

Period	Licensed hotels with facilities	Motels and guest houses	Serviced apartments	1 and Ungraded	2	3	4 and 5	Total
GUEST ARRIVALS ('000)								
1999								
June quarter	91.3	153.0	49.2	18.8	43.8	143.0	87.9	293.5
2000								
April	35.8	44.8	13.2	6.4	11.2	41.3	34.9	93.9
May	35.4	49.6	15.5	7.7	11.7	46.3	34.8	100.5
June	38.0	56.6	18.0	9.1	14.8	49.6	39.0	112.6
June quarter	109.2	151.0	46.7	23.2	37.7	137.3	108.7	307.0
AVERAGE LENGTH OF STAY (days)								
1999								
June quarter	1.8	1.8	2.7	2.2	1.6	1.8	2.3	1.9
2000								
June quarter	1.7	1.9	3.1	2.3	1.7	1.8	2.2	2.0
TAKINGS FROM ACCOMMODATION (\$'000) (b)								
1999								
June quarter	12 294	13 783	7 020	1 800	2 964	13 979	14 355	33 097
2000								
April	4 979	4 444	2 119	565	703	4 494	5 781	11 543
May	4 765	5 209	2 631	744	884	5 026	5 952	12 606
June	5 089	5 810	3 168	987	1 020	5 338	6 723	14 067
June quarter	14 834	15 463	7 919	2 296	2 607	14 858	18 455	38 216
AVERAGE TAKINGS PER ROOM NIGHT OCCUPIED (\$) (b)								
1999								
June quarter	117.0	88.4	101.1	74.1	72.9	98.7	115.8	100.2
2000								
April	142.8	89.3	100.3	69.9	66.0	109.4	125.7	109.1
May	131.2	91.0	104.1	75.6	69.2	108.6	119.1	106.0
June	128.9	92.9	113.5	82.0	71.1	108.0	124.2	108.3
June quarter	134.0	91.2	106.6	76.6	69.0	108.6	123.0	107.8
AVERAGE TAKINGS PER AVAILABLE ROOM NIGHT (\$) (b)								
1999								
June quarter	68.5	50.0	68.9	35.1	33.2	59.8	78.5	59.4
2000								
April	87.3	48.5	60.1	30.5	31.4	59.9	84.8	62.7
May	80.8	53.7	72.2	36.7	36.6	64.9	84.5	65.5
June	89.2	61.9	89.8	50.3	43.6	71.2	98.6	75.6
June quarter	85.7	54.7	74.0	39.3	37.3	65.3	89.3	67.9

(a) Comprising establishments with 15 or more rooms or units (see Explanatory Notes).

(b) Including bed tax where applicable.

STAR GRADING

<i>Period</i>	<i>Licensed hotels with facilities</i>	<i>Motels and guest houses</i>	<i>Serviced apartments</i>	<i>1 and ungraded</i>	<i>2</i>	<i>3</i>	<i>4 and 5</i>	<i>Total</i>
ESTABLISHMENTS, CAPACITY AND EMPLOYMENT (number)								
June quarter 1999								
Establishments	14	24	17	10	7	22	16	55
Guest rooms	1 768	1 701	1 217	738	404	1 730	1 814	4 686
Bed spaces	4 558	5 380	4 236	1 903	1 635	5 187	5 449	14 174
Persons employed	1 318	551	418	205	104	656	1 322	2 287
June quarter 2000								
Establishments	15	25	20	10	8	20	22	60
Guest rooms	1 901	1 680	1 451	524	560	1 400	2 548	5 032
Bed spaces	5 092	5 179	4 912	1 564	1 766	4 362	7 491	15 183
Persons employed	1 291	554	417	136	160	462	1 504	2 262
ROOM NIGHTS OCCUPIED ('000)								
1999								
<i>June quarter</i>	101.0	78.4	80.3	39.7	17.0	85.4	117.6	259.7
2000								
April	39.5	30.0	29.8	8.6	10.8	26.1	53.7	99.3
May	39.9	28.8	31.9	8.5	9.4	25.8	56.9	100.6
June	38.0	29.2	29.3	8.6	9.4	24.5	53.9	96.5
<i>June quarter</i>	117.4	87.9	91.1	25.8	29.6	76.4	164.6	296.4
ROOM OCCUPANCY RATES (%)								
1999								
<i>June quarter</i>	62.8	50.6	72.5	59.1	46.2	54.2	71.2	60.9
2000								
April	69.2	59.4	68.6	55.0	64.2	62.2	70.3	65.8
May	67.7	55.3	70.9	52.4	54.2	59.3	72.1	64.5
June	66.6	57.9	67.4	54.9	56.1	58.4	70.6	63.9
<i>June quarter</i>	67.9	57.5	69.0	54.1	58.1	60.0	71.0	64.7
GUEST NIGHTS ('000)								
1999								
<i>June quarter</i>	150.3	131.7	134.2	57.7	35.5	142.0	181.0	416.2
2000								
April	60.6	53.0	56.4	15.2	21.2	49.5	84.2	170.1
May	56.6	46.7	53.5	14.5	15.8	47.2	79.3	156.7
June	53.4	52.2	54.4	16.4	18.4	46.2	79.0	160.1
<i>June quarter</i>	170.6	152.0	164.3	46.0	55.4	143.0	242.5	486.8
BED OCCUPANCY RATES (%)								
1999								
<i>June quarter</i>	36.2	26.9	34.8	33.3	23.9	30.1	36.5	32.3
2000								
April	39.7	34.1	38.3	32.3	40.0	37.8	37.5	37.3
May	35.8	29.1	35.1	29.8	28.9	34.9	34.1	33.3
June	34.9	33.6	36.9	34.9	34.8	35.3	35.2	35.1
<i>June quarter</i>	36.8	32.2	36.8	32.3	34.5	36.0	35.6	35.2

(a) Comprising establishments with 15 or more rooms or units (see Explanatory Notes).

STAR GRADING

<i>Period</i>	<i>Licensed hotels with facilities</i>	<i>Motels and guest houses</i>	<i>Serviced apartments</i>	<i>1 and ungraded</i>	<i>2</i>	<i>3</i>	<i>4 and 5</i>	<i>Total</i>
GUEST ARRIVALS ('000)								
1999								
June quarter	76.8	74.8	37.4	22.5	18.8	62.5	85.1	189.0
2000								
April	34.0	27.7	14.8	5.3	8.9	21.3	40.9	76.4
May	32.6	26.6	13.9	5.8	7.0	19.7	40.6	73.1
June	30.6	28.5	14.1	6.1	7.5	18.6	41.1	73.3
June quarter	97.3	82.7	42.8	17.2	23.4	59.5	122.7	222.8
AVERAGE LENGTH OF STAY (days)								
1999								
June quarter	2.0	1.8	3.6	2.6	1.9	2.3	2.1	2.2
2000								
June quarter	1.8	1.8	3.8	2.7	2.4	2.4	2.0	2.2
TAKINGS FROM ACCOMMODATION (\$'000)								
1999								
June quarter	11 734	5 997	7 651	2 699	1 156	7 184	14 343	25 382
2000								
April	4 525	2 391	3 042	758	731	2 079	6 391	9 958
May	4 875	2 188	3 138	777	584	1 904	6 935	10 201
June	4 590	2 371	2 975	784	615	1 877	6 661	9 936
June quarter	13 989	6 951	9 155	2 318	1 930	5 860	19 987	30 095
AVERAGE TAKINGS PER ROOM NIGHT OCCUPIED (\$)								
1999								
June quarter	116.2	76.5	95.3	67.9	68.0	84.1	122.0	97.8
2000								
April	114.6	79.8	101.9	87.6	67.8	79.5	119.0	100.3
May	122.1	76.0	98.4	91.3	62.1	73.9	121.9	101.4
June	120.8	81.3	101.4	90.7	65.2	76.5	123.5	102.9
June quarter	119.2	79.0	100.5	89.9	65.1	76.7	121.5	101.5
AVERAGE TAKINGS PER AVAILABLE ROOM NIGHT (\$)								
1999								
June quarter	72.9	38.7	69.1	40.2	31.5	45.6	86.9	59.5
2000								
April	79.3	47.4	69.9	48.2	43.5	49.5	83.6	66.0
May	82.7	42.0	69.8	47.8	33.6	43.9	87.8	65.4
June	80.5	47.1	68.3	49.8	36.6	44.7	87.1	65.8
June quarter	80.9	45.5	69.3	48.6	37.9	46.0	86.2	65.7

(a) Comprising establishments with 15 or more rooms or units (see Explanatory Notes).

Period	South Coast	Illawarra	Sydney	Snowy Mountains	Capital Country	Murray	Riverina	Central West
ESTABLISHMENTS, CAPACITY AND EMPLOYMENT (number)								
June quarter 1999								
Establishments	84	55	267	58	45	97	68	120
Guest rooms	2 072	1 813	28 400	2 257	1 441	2 807	1 916	3 426
Bed spaces	6 469	5 477	72 992	8 490	4 353	9 000	5 710	10 641
Persons employed	608	1 032	19 859	736	483	856	634	1 243
June quarter 2000								
Establishments	80	55	283	60	45	98	68	122
Guest rooms	1 953	1 797	31 393	2 383	1 451	2 835	1 935	3 534
Bed spaces	6 114	5 292	79 527	9 202	4 371	9 172	5 688	11 001
Persons employed	603	1 073	22 899	845	463	927	634	1 266
ROOM NIGHTS OCCUPIED ('000)								
1999								
June quarter	80.2	85.6	1 731.3	36.5	59.5	129.7	95.3	177.1
2000								
April	31.2	32.7	651.4	11.4	24.1	53.5	36.6	63.0
May	25.7	31.5	655.5	9.2	24.7	42.4	34.0	59.2
June	22.4	29.9	595.7	19.6	20.7	37.1	29.1	55.1
June quarter	79.3	94.1	1 902.6	40.2	69.4	133.0	99.8	177.3
ROOM OCCUPANCY RATES (%)								
1999								
June quarter	42.9	51.9	68.0	18.1	45.3	50.8	54.6	57.0
2000								
April	53.3	60.7	70.1	16.0	55.3	62.9	63.1	59.4
May	42.4	56.6	67.9	12.5	54.8	48.3	56.7	54.1
June	38.5	55.5	63.4	27.5	47.6	43.7	50.1	52.0
June quarter	44.7	57.6	67.1	18.6	52.6	51.6	56.7	55.1
GUEST NIGHTS ('000)								
1999								
June quarter	148.1	151.4	2 738.9	77.7	107.0	238.8	155.0	321.2
2000								
April	61.5	59.7	1 078.8	23.2	45.4	106.0	64.8	125.2
May	43.6	48.2	993.0	18.3	41.8	72.9	52.7	100.7
June	39.2	47.2	924.6	47.1	37.3	67.3	45.4	97.6
June quarter	144.3	155.0	2 996.4	88.7	124.5	246.2	162.9	323.5
GUEST ARRIVALS ('000)								
1999								
June quarter	85.2	84.0	1 096.6	35.3	72.8	140.3	110.6	224.0
2000								
April	34.7	31.5	425.0	13.1	30.4	58.8	46.6	87.9
May	25.4	26.3	404.3	9.6	25.7	44.3	36.8	71.9
June	23.2	25.6	383.4	19.9	21.9	41.6	32.7	71.1
June quarter	83.3	83.4	1 212.8	42.7	78.0	144.7	116.1	230.9
TAKINGS FROM ACCOMMODATION (\$'000)								
1999								
June quarter	5 250	8 704	226 273	2 932	3 936	8 804	6 341	11 950
2000								
April	2 271	3 564	88 580	857	1 599	3 838	2 591	4 520
May	1 623	3 312	89 490	584	1 654	2 919	2 329	4 018
June	1 477	3 317	80 155	2 205	1 321	2 590	2 030	3 774
June quarter	5 371	10 193	258 225	3 647	4 575	9 347	6 950	12 312

<i>Period</i>	<i>Hunter</i>	<i>Mid North Coast</i>	<i>Holiday Coast</i>	<i>Northern Rivers</i>	<i>New England/ North West</i>	<i>Outback</i>	<i>Central Coast</i>	<i>Blue Mountains</i>
ESTABLISHMENTS, CAPACITY AND EMPLOYMENT (number)								
June quarter 1999								
Establishments	95	84	46	75	88	37	37	31
Guest rooms	3 458	2 157	1 760	1 991	2 419	908	1 343	1 176
Bed spaces	10 990	6 716	6 008	6 293	7 276	2 649	4 644	3 422
Persons employed	2 089	721	877	594	828	258	913	976
June quarter 2000								
Establishments	96	85	46	77	88	38	39	34
Guest rooms	3 709	2 224	1 755	2 158	2 422	940	1 370	1 294
Bed spaces	11 870	7 062	5 896	6 789	7 269	2 708	4 599	3 553
Persons employed	2 118	762	1 027	677	828	289	906	1 086
ROOM NIGHTS OCCUPIED ('000)								
1999								
<i>June quarter</i>	157.1	89.0	79.7	86.8	127.6	40.5	65.0	58.7
2000								
April	59.1	36.9	32.1	33.3	43.8	14.9	22.8	24.0
May	56.1	28.3	25.5	29.0	42.9	15.5	18.6	20.8
June	54.5	26.6	23.5	30.0	38.5	13.4	18.7	19.3
<i>June quarter</i>	169.7	91.8	81.1	92.3	125.1	43.8	60.1	64.1
ROOM OCCUPANCY RATES (%)								
1999								
<i>June quarter</i>	49.9	46.0	49.7	48.1	58.0	49.1	53.2	54.9
2000								
April	53.1	55.3	60.9	51.4	60.2	52.7	55.5	61.8
May	48.8	41.5	46.9	43.4	57.1	53.3	43.9	51.9
June	49.2	40.3	44.6	46.3	52.9	47.6	45.5	49.8
<i>June quarter</i>	50.4	45.7	50.8	47.0	56.8	51.2	48.2	54.5
GUEST NIGHTS ('000)								
1999								
<i>June quarter</i>	274.6	170.0	159.6	159.4	218.7	69.7	119.4	111.6
2000								
April	109.5	76.1	69.6	65.4	81.3	27.0	45.2	47.4
May	90.4	48.7	46.9	50.1	68.2	25.6	32.8	35.1
June	91.9	49.0	45.3	53.3	64.9	22.9	33.5	35.1
<i>June quarter</i>	291.8	173.8	161.8	168.7	214.4	75.6	111.5	117.6
GUEST ARRIVALS ('000)								
1999								
<i>June quarter</i>	158.5	108.4	84.4	97.4	153.6	45.6	58.8	51.2
2000								
April	64.1	46.5	37.7	37.6	58.3	16.8	21.3	27.1
May	55.1	32.6	25.7	30.8	47.4	14.9	16.7	21.6
June	54.3	32.0	26.8	31.8	45.4	14.7	17.0	21.3
<i>June quarter</i>	173.5	111.1	90.1	100.2	151.2	46.4	55.0	70.0
TAKINGS FROM ACCOMMODATION (\$'000)								
1999								
<i>June quarter</i>	15 866	6 439	6 217	5 884	8 190	2 387	6 706	6 949
2000								
April	6 548	2 980	3 067	2 622	2 882	905	2 556	3 059
May	5 670	1 970	1 938	2 026	2 737	922	1 901	2 494
June	5 746	1 869	1 711	2 037	2 537	820	1 905	2 487
<i>June quarter</i>	17 964	6 819	6 716	6 685	8 155	2 647	6 361	8 039

Period	Melbourne	Wimmera	Mallee	Western	Western Grampians	Bendigo Loddon	Peninsula	Central Murray	Goulburn	High Country
ESTABLISHMENTS, CAPACITY AND EMPLOYMENT (number)										
June quarter 1999										
Establishments	220	6	42	57	21	30	20	21	27	73
Guest rooms	17 519	117	1 276	1 521	496	743	645	558	689	1 943
Bed spaces	44 462	335	3 878	4 755	1 438	2 296	1 744	1 668	2 030	7 082
Persons employed	15 939	30	471	713	197	333	368	160	374	722
June quarter 2000										
Establishments	228	6	43	54	20	31	21	21	27	72
Guest rooms	17 995	117	1 297	1 467	484	779	710	561	694	1 921
Bed spaces	45 420	338	3 916	4 523	1 394	2 369	1 839	1 707	2 059	7 050
Persons employed	15 527	29	471	745	203	365	384	160	348	817
ROOM NIGHTS OCCUPIED ('000)										
1999										
June quarter	1 021.3	3.7	56.5	69.3	21.1	36.8	22.7	23.1	31.3	52.7
2000										
April	369.6	1.6	20.2	25.9	8.7	12.9	9.7	9.6	11.1	22.3
May	377.7	1.4	20.4	20.9	7.4	12.3	8.4	7.3	9.9	19.2
June	350.9	1.3	17.3	15.7	6.5	11.8	7.5	6.3	10.1	18.6
June quarter	1 098.2	4.3	57.9	62.6	22.5	37.1	25.6	23.2	31.1	60.1
ROOM OCCUPANCY RATES (%)										
1999										
June quarter	64.5	34.9	48.6	50.0	46.8	54.5	38.7	45.6	49.9	29.8
2000										
April	68.5	46.1	52.0	58.9	59.6	55.3	45.6	56.8	53.1	38.7
May	67.8	38.2	50.7	46.0	49.4	51.0	38.0	42.1	46.0	32.2
June	65.0	37.7	44.4	36.7	44.6	50.6	35.4	37.5	48.5	32.3
June quarter	67.1	40.6	49.0	47.2	51.2	52.3	39.6	45.4	49.2	34.4
GUEST NIGHTS ('000)										
1999										
June quarter	1 608.9	6.3	98.2	131.5	34.6	62.8	38.7	41.5	49.1	107.2
2000										
April	600.3	2.9	39.8	51.5	15.8	25.3	15.8	18.0	18.1	44.3
May	566.1	2.1	32.4	36.9	11.2	20.3	12.8	11.6	14.4	34.8
June	551.2	2.0	29.7	28.8	10.2	20.1	11.7	10.9	15.0	40.8
June quarter	1 717.5	7.1	101.9	117.2	37.1	65.7	40.3	40.4	47.6	119.9
GUEST ARRIVALS ('000)										
1999										
June quarter	672.9	5.2	59.0	77.6	27.9	44.1	19.6	26.6	34.8	55.9
2000										
April	242.1	2.4	23.7	31.6	10.9	16.9	8.6	10.3	12.7	23.1
May	239.7	1.6	19.7	22.6	8.3	13.8	6.9	8.0	10.5	19.1
June	237.5	1.7	18.0	18.2	7.7	13.2	6.4	6.9	10.5	22.7
June quarter	719.4	5.7	61.4	72.3	26.9	43.9	21.9	25.2	33.6	64.9
TAKINGS FROM ACCOMMODATION (\$'000)										
1999										
June quarter	130 007	194	3 632	5 330	1 453	2 810	2 708	1 651	2 100	4 147
2000										
April	47 608	86	1 417	2 271	613	1 052	1 118	735	770	1 752
May	49 606	71	1 346	1 678	498	939	981	518	664	1 379
June	45 188	68	1 181	1 269	469	938	898	451	713	1 845
June quarter	142 402	225	3 944	5 219	1 581	2 928	2 997	1 704	2 148	4 976

Period	Lakes	Gippsland	Melbourne East	Geelong	Macedon	Spa Country	Ballarat	Central Highlands	Upper Yarra	Murray East	Phillip Island
ESTABLISHMENTS, CAPACITY AND EMPLOYMENT (number)											
June quarter 1999											
Establishments	25	37	14	22	3	5	24	15	13	14	9
Guest rooms	683	1 056	427	693	n.p.	n.p.	807	359	425	319	281
Bed spaces	2 028	3 065	1 015	2 033	n.p.	n.p.	2 612	1 131	1 132	980	1 015
Persons employed	238	333	409	363	n.p.	n.p.	390	94	253	72	121
June quarter 2000											
Establishments	25	34	15	22	4	5	25	15	13	14	10
Guest rooms	672	1 014	467	694	115	118	859	360	424	320	316
Bed spaces	2 014	3 018	1 090	2 122	243	300	2 674	1 131	1 077	970	1 118
Persons employed	244	302	459	362	87	105	443	91	248	75	121
ROOM NIGHTS OCCUPIED ('000)											
1999											
June quarter	21.7	42.6	14.3	32.0	n.p.	n.p.	34.6	14.1	15.2	13.5	10.3
2000											
April	10.4	11.6	5.4	12.1	1.3	2.0	14.6	5.5	5.7	5.9	4.9
May	8.1	11.4	5.4	10.7	1.6	1.7	12.7	4.5	5.0	4.5	2.9
June	6.0	10.1	5.0	9.4	1.4	2.0	11.6	3.7	3.5	3.2	2.6
June quarter	24.5	33.1	15.8	32.2	4.3	5.6	38.9	13.6	14.2	13.6	10.4
ROOM OCCUPANCY RATES (%)											
1999											
June quarter	34.9	44.4	36.8	50.7	n.p.	n.p.	47.1	43.2	39.2	46.5	40.2
2000											
April	51.7	38.0	38.5	58.3	38.9	55.6	56.6	50.6	44.8	61.8	52.2
May	38.8	36.2	37.4	49.5	45.4	45.8	47.7	41.1	37.7	45.6	29.4
June	30.0	33.2	35.4	45.4	39.9	56.3	45.1	36.2	27.7	33.2	27.4
June quarter	40.1	35.8	37.1	51.0	41.5	52.5	49.8	42.8	36.7	46.8	36.2
GUEST NIGHTS ('000)											
1999											
June quarter	40.3	60.5	20.6	51.7	n.p.	n.p.	72.7	27.1	22.9	24.5	23.1
2000											
April	20.5	20.2	8.3	21.6	1.8	3.3	31.4	11.1	9.5	10.8	10.7
May	13.5	16.0	7.6	16.1	1.8	2.6	25.4	8.1	7.8	8.1	6.2
June	10.1	14.8	7.1	15.1	1.6	2.8	23.6	6.8	5.7	5.5	5.7
June quarter	44.1	51.1	22.9	52.7	5.2	8.7	80.4	26.0	23.0	24.5	22.5
GUEST ARRIVALS ('000)											
1999											
June quarter	27.3	34.9	12.4	30.3	n.p.	n.p.	42.1	16.7	13.3	15.7	13.4
2000											
April	12.5	12.7	4.7	12.4	1.0	2.2	19.3	7.6	5.8	6.6	5.6
May	8.1	10.3	4.2	9.3	1.0	1.8	15.1	5.6	4.8	5.0	3.5
June	6.4	9.4	4.4	9.7	1.0	1.7	13.7	4.9	3.3	3.7	3.2
June quarter	26.9	32.4	13.3	31.3	3.0	5.6	48.1	18.2	13.9	15.3	12.4
TAKINGS FROM ACCOMMODATION (\$'000)											
1999											
June quarter	1 371	2 756	1 373	2 670	n.p.	n.p.	2 731	952	1 640	751	846
2000											
April	705	788	589	1 063	162	271	1 226	409	657	369	454
May	472	734	545	919	171	253	1 041	275	597	280	235
June	372	699	533	841	166	281	1 005	255	404	211	226
June quarter	1 549	2 221	1 668	2 823	499	806	3 272	940	1 658	860	915

Period	Gold Coast	Brisbane	Sunshine Coast	Hervey Bay/ Maryborough	Darling Downs	Bundaberg
ESTABLISHMENTS, CAPACITY AND EMPLOYMENT (number)						
June quarter 1999						
Establishments	146	157	92	44	61	23
Guest rooms	12 920	9 450	4 225	1 591	1 523	549
Bed spaces	43 574	27 331	14 718	5 378	4 811	1 673
Persons employed	8 416	6 934	2 265	706	577	176
June quarter 2000						
Establishments	150	162	96	43	63	24
Guest rooms	13 228	9 962	4 232	1 607	1 613	594
Bed spaces	43 860	27 754	14 577	5 478	5 111	1 772
Persons employed	8 485	7 101	2 194	684	616	192
ROOM NIGHTS OCCUPIED ('000)						
1999						
June quarter	645.3	535.2	161.2	67.8	76.9	29.4
2000						
April	253.9	172.1	68.3	24.7	27.6	10.2
May	204.4	191.5	49.5	21.4	26.5	10.1
June	222.5	191.5	51.3	21.6	25.6	10.2
June quarter	680.7	555.1	169.1	67.7	79.7	30.6
ROOM OCCUPANCY RATES (%)						
1999						
June quarter	54.9	63.0	42.2	46.8	55.6	58.8
2000						
April	64.0	57.6	53.8	51.3	57.1	57.3
May	49.8	62.0	37.7	43.0	53.0	54.9
June	56.1	64.1	40.4	44.8	52.8	57.4
June quarter	56.6	61.2	43.9	46.3	54.3	56.5
GUEST NIGHTS ('000)						
1999						
June quarter	1 442.9	853.6	377.4	134.0	141.4	47.5
2000						
April	600.7	289.6	173.4	51.2	52.6	18.8
May	444.8	294.9	110.1	37.3	44.2	15.9
June	505.1	303.8	119.6	39.6	43.7	17.6
June quarter	1 550.6	888.3	403.1	128.1	140.6	52.3
GUEST ARRIVALS ('000)						
1999						
June quarter	454.6	387.0	111.2	67.3	96.0	31.7
2000						
April	166.3	120.6	49.6	26.2	34.5	12.6
May	137.4	126.9	36.2	20.0	30.0	10.6
June	150.1	125.5	41.2	21.9	30.2	12.3
June quarter	453.8	373.0	126.9	68.1	94.6	35.5
TAKINGS FROM ACCOMMODATION (\$'000)						
1999						
June quarter	57 555	49 426	17 680	4 590	4 965	1 976
2000						
April	25 189	15 718	8 011	1 807	1 908	779
May	18 404	18 135	5 250	1 329	1 749	692
June	19 833	17 390	5 030	1 390	1 734	690
June quarter	63 426	51 243	18 290	4 527	5 391	2 161

<i>Period</i>	<i>Fitzroy</i>	<i>Mackay</i>	<i>Whitsundays</i>	<i>Northern</i>	<i>Tropical North Queensland</i>	<i>Outback</i>	<i>Great Barrier Reef</i>
ESTABLISHMENTS, CAPACITY AND EMPLOYMENT (number)							
June quarter 1999							
Establishments	79	51	17	55	149	50	19
Guest rooms	2 950	1 657	2 302	2 397	10 044	1 279	2 736
Bed spaces	9 601	4 909	8 475	7 108	31 330	3 625	9 554
Persons employed	1 588	904	1 986	1 456	5 245	507	2 627
June quarter 2000							
Establishments	83	53	18	55	148	52	17
Guest rooms	3 121	1 755	2 406	2 395	9 838	1 394	2 697
Bed spaces	10 054	5 207	8 555	6 971	30 052	3 929	9 181
Persons employed	1 600	948	1 863	1 510	5 398	550	2 344
ROOM NIGHTS OCCUPIED ('000)							
1999							
<i>June quarter</i>	151.0	90.5	106.2	145.1	504.0	73.5	122.4
2000							
April	56.1	29.8	37.6	40.5	166.9	21.0	45.9
May	49.3	27.4	33.1	47.7	175.3	24.3	37.6
June	52.9	29.4	32.6	49.0	195.4	26.0	36.1
<i>June quarter</i>	158.3	86.6	103.3	137.2	537.5	71.3	119.6
ROOM OCCUPANCY RATES (%)							
1999							
<i>June quarter</i>	56.3	60.0	50.8	66.8	55.4	63.1	49.2
2000							
April	59.9	56.6	52.0	56.4	56.5	50.7	56.7
May	51.0	50.3	44.3	64.3	57.5	57.1	45.1
June	56.5	55.9	47.6	68.2	66.4	63.1	47.3
<i>June quarter</i>	55.8	54.2	48.0	63.0	60.1	57.0	49.7
GUEST NIGHTS ('000)							
1999							
<i>June quarter</i>	258.4	148.7	235.0	231.3	1 012.5	112.2	259.7
2000							
April	103.1	51.2	87.6	69.2	343.9	33.4	102.8
May	77.4	41.0	68.3	70.9	325.4	35.4	76.6
June	87.7	46.7	75.1	77.9	387.7	39.8	80.9
<i>June quarter</i>	268.2	139.0	231.0	218.0	1 057.0	108.6	260.2
GUEST ARRIVALS ('000)							
1999							
<i>June quarter</i>	138.4	68.4	68.7	112.9	297.8	63.3	68.4
2000							
April	52.1	22.0	26.5	34.6	98.2	20.4	27.1
May	42.8	19.7	21.4	36.7	94.4	21.0	21.7
June	48.6	21.4	25.1	39.8	109.7	24.5	22.6
<i>June quarter</i>	143.5	63.1	73.0	111.0	302.3	66.0	71.3
TAKINGS FROM ACCOMMODATION (\$'000)							
1999							
<i>June quarter</i>	11 243	6 179	14 719	10 847	55 298	4 497	20 157
2000							
April	4 743	2 109	6 595	3 272	18 377	1 371	8 790
May	3 624	1 822	5 211	3 774	18 451	1 589	6 622
June	3 883	1 973	4 378	3 883	20 947	1 716	5 625
<i>June quarter</i>	12 251	5 904	16 184	10 929	57 776	4 675	21 038

Period	South East	Murraylands	Fleurieu Peninsula	Adelaide	Barossa Valley	Riverland	Mid North	Flinders Ranges	Far North	Eyre Peninsula	Yorke Peninsula	Kangaroo Island
ESTABLISHMENTS, CAPACITY AND EMPLOYMENT (number)												
June quarter 1999												
Establishments	32	4	13	89	7	14	5	19	8	25	8	6
Guest rooms	915	96	447	5 707	210	525	144	637	373	787	151	181
Bed spaces	2 794	302	1 389	15 633	652	1 558	425	2 003	1 070	2 328	428	546
Persons employed	406	48	233	3 750	175	518	97	264	196	542	54	82
June quarter 2000												
Establishments	32	4	13	91	9	14	5	19	8	24	8	6
Guest rooms	929	96	441	5 871	367	499	144	636	388	765	154	167
Bed spaces	2 785	299	1 392	16 492	1 078	1 533	438	1 955	1 080	2 209	438	473
Persons employed	416	39	221	3 749	266	496	87	240	175	505	55	94
ROOM NIGHTS OCCUPIED ('000)												
1999												
June quarter	40.5	3.6	15.0	315.2	10.1	23.4	8.1	32.7	12.6	34.2	4.8	5.2
2000												
April	17.0	1.7	6.0	125.0	6.8	7.1	2.8	10.3	5.1	10.5	1.9	2.9
May	15.1	1.3	4.7	112.8	5.3	7.8	2.6	10.2	4.8	11.0	1.7	2.2
June	11.2	1.2	3.5	102.5	4.5	6.7	2.2	10.1	5.4	10.2	1.2	1.1
June quarter	43.3	4.1	14.2	340.4	16.5	21.5	7.6	30.6	15.3	31.8	4.8	6.3
ROOM OCCUPANCY RATES (%)												
1999												
June quarter	48.6	41.1	37.0	60.7	52.7	49.0	61.6	56.4	37.1	47.7	34.6	31.8
2000												
April	61.0	58.0	45.0	71.0	61.4	47.4	65.2	54.2	44.1	45.9	41.6	58.7
May	52.5	42.0	34.5	62.0	46.8	50.2	57.4	52.0	39.8	46.6	34.6	43.2
June	40.2	41.9	26.5	58.2	40.4	44.5	50.6	52.7	46.4	44.5	26.3	22.3
June quarter	51.3	47.3	35.3	63.7	49.5	47.4	57.7	52.9	43.4	45.7	34.2	41.4
GUEST NIGHTS ('000)												
1999												
June quarter	63.8	6.2	33.1	498.5	18.6	38.9	13.8	58.1	21.0	50.0	7.8	9.7
2000												
April	31.4	3.0	14.6	215.5	12.4	13.1	5.2	18.5	8.6	16.8	3.2	6.1
May	23.9	2.0	10.4	172.4	8.9	12.5	4.3	17.9	7.6	15.6	2.6	3.9
June	17.8	2.3	7.7	160.2	7.3	11.1	3.7	17.0	9.1	14.6	2.0	1.9
June quarter	73.1	7.3	32.7	548.1	28.6	36.7	13.3	53.5	25.3	47.0	7.8	11.9
GUEST ARRIVALS ('000)												
1999												
June quarter	41.5	4.2	18.1	221.0	12.3	25.6	9.4	42.6	15.2	34.3	5.0	5.6
2000												
April	18.0	2.0	7.0	85.9	6.7	7.6	3.6	14.0	5.7	10.7	1.8	3.1
May	14.1	1.4	5.5	75.2	6.8	8.2	2.8	13.2	5.5	9.8	1.4	2.1
June	10.2	1.5	4.4	71.5	5.2	7.1	2.6	13.5	6.3	9.2	1.3	1.1
June quarter	42.2	5.0	16.8	232.7	18.7	22.9	9.0	40.7	17.4	29.7	4.6	6.4
TAKINGS FROM ACCOMMODATION (\$'000)												
1999												
June quarter	2 504	208	1 155	32 024	743	1 444	551	2 186	921	2 009	282	421
2000												
April	1 135	87	477	13 236	710	471	201	720	394	659	110	243
May	961	62	358	11 682	569	504	185	707	367	676	98	164
June	725	63	277	10 472	445	434	152	685	420	642	75	88
June quarter	2 821	212	1 112	35 390	1 724	1 410	538	2 112	1 181	1 976	282	496

Period	South East	Goldfields	Midwest	Gascoyne	Pilbara	Kimberley	Perth	Peel	South West	Great Southern	Wheatbelt
ESTABLISHMENTS, CAPACITY AND EMPLOYMENT (number)											
June quarter 1999											
Establishments	10	23	24	9	17	27	96	5	55	19	23
Guest rooms	295	1 017	796	424	1 094	1 473	8 925	253	2 187	708	611
Bed spaces	883	2 606	2 069	1 191	2 490	4 401	24 785	932	6 796	2 062	1 504
Persons employed	129	448	327	187	497	857	5 540	114	1 185	287	214
June quarter 2000											
Establishments	10	25	25	11	20	27	100	6	58	19	24
Guest rooms	294	1 066	835	504	1 419	1 482	9 254	286	2 415	717	686
Bed spaces	861	2 732	2 244	1 350	3 061	4 323	25 235	1 062	7 494	2 112	1 619
Persons employed	128	453	365	211	469	886	5 729	148	1 283	287	250
ROOM NIGHTS OCCUPIED ('000)											
1999											
June quarter	11.9	43.7	31.7	16.6	48.9	69.1	490.3	11.1	93.5	25.6	19.3
2000											
April	5.2	13.8	12.0	7.5	14.9	19.3	183.0	4.8	38.7	10.7	7.9
May	4.0	16.0	12.1	7.6	20.3	25.4	173.1	3.6	30.2	8.4	8.2
June	3.1	14.9	10.9	7.1	22.1	32.9	170.5	3.3	27.5	7.1	7.8
June quarter	12.3	44.7	35.0	22.2	57.2	77.6	526.6	11.8	96.4	26.3	23.9
ROOM OCCUPANCY RATES (%)											
1999											
June quarter	44.4	47.3	43.7	43.1	49.2	51.5	60.4	48.2	47.0	39.8	34.8
2000											
April	58.6	43.0	47.7	49.8	35.0	46.2	65.9	56.3	54.5	49.8	38.5
May	44.4	48.5	46.9	48.8	46.1	57.5	60.3	40.6	41.2	37.9	38.3
June	35.4	46.5	43.4	46.8	51.8	74.0	61.4	38.9	38.5	33.1	38.0
June quarter	46.1	46.0	46.0	48.5	44.3	59.5	62.5	45.2	44.7	40.3	38.3
GUEST NIGHTS ('000)											
1999											
June quarter	20.4	63.8	52.8	26.0	62.7	128.3	788.5	27.9	184.0	46.0	28.2
2000											
April	9.8	19.9	20.3	14.8	19.1	35.6	312.2	11.5	88.6	19.6	11.7
May	6.1	21.7	18.8	12.1	24.1	43.4	265.2	7.4	54.4	12.4	10.6
June	4.6	20.6	17.4	11.0	27.4	60.4	279.9	7.1	53.5	11.7	10.4
June quarter	20.6	62.2	56.5	37.9	70.6	139.4	857.3	26.0	196.5	43.7	32.7
GUEST ARRIVALS ('000)											
1999											
June quarter	9.0	30.6	28.3	12.4	31.7	43.9	326.8	12.0	84.9	26.5	18.7
2000											
April	3.6	9.7	11.3	5.8	8.2	11.9	114.4	5.4	40.3	10.7	7.4
May	2.8	9.6	9.6	5.3	11.0	16.0	101.5	4.1	28.7	7.6	6.4
June	2.3	9.0	9.8	5.3	12.3	20.2	108.5	3.6	27.2	7.7	6.2
June quarter	8.7	28.2	30.7	16.3	31.5	48.1	324.4	13.1	96.2	26.0	20.0
TAKINGS FROM ACCOMMODATION (\$'000)											
1999											
June quarter	756	3 713	1 993	1 214	3 891	7 514	50 365	896	8 060	1 965	1 015
2000											
April	353	1 008	780	556	1 079	1 931	19 371	487	3 867	899	463
May	259	1 250	750	540	1 487	2 641	17 780	305	2 451	637	452
June	192	1 149	728	507	1 585	3 743	17 267	280	2 338	578	403
June quarter	804	3 406	2 258	1 603	4 151	8 316	54 419	1 072	8 657	2 114	1 319

Period	Greater Hobart	Southern	East Coast	Northern	Greater Launceston	North West	West Coast
ESTABLISHMENTS, CAPACITY AND EMPLOYMENT (number)							
June quarter 1999							
Establishments	38	14	4	2	30	32	9
Guest rooms	2 092	461	n.p.	n.p.	1 355	982	397
Bed spaces	6 007	1 592	n.p.	n.p.	4 485	2 852	1 172
Persons employed	1 609	232	n.p.	n.p.	1 075	549	153
June quarter 2000							
Establishments	39	14	4	2	30	32	10
Guest rooms	2 068	458	n.p.	n.p.	1 350	986	412
Bed spaces	5 921	1 583	n.p.	n.p.	4 424	2 782	1 231
Persons employed	1 717	218	n.p.	n.p.	1 155	532	180
ROOM NIGHTS OCCUPIED ('000)							
1999							
June quarter	105.1	15.9	n.p.	n.p.	62.8	33.9	14.3
2000							
April	41.6	7.7	n.p.	n.p.	23.9	13.5	6.8
May	38.7	4.8	n.p.	n.p.	25.1	12.3	4.3
June	32.3	3.4	n.p.	n.p.	15.9	8.9	2.8
June quarter	112.6	15.9	n.p.	n.p.	64.9	34.7	13.8
ROOM OCCUPANCY RATES (%)							
1999							
June quarter	55.2	37.8	n.p.	n.p.	50.9	37.9	39.6
2000							
April	67.1	56.0	n.p.	n.p.	59.0	45.5	54.8
May	60.4	33.6	n.p.	n.p.	60.0	40.2	33.8
June	52.1	25.1	n.p.	n.p.	39.3	30.2	22.3
June quarter	59.9	38.2	n.p.	n.p.	52.8	38.7	36.9
GUEST NIGHTS ('000)							
1999							
June quarter	182.0	32.8	n.p.	n.p.	113.7	57.6	25.3
2000							
April	78.8	16.2	n.p.	n.p.	44.8	23.7	13.2
May	63.8	9.2	n.p.	n.p.	42.7	18.9	7.3
June	56.9	7.2	n.p.	n.p.	28.4	14.2	4.6
June quarter	199.5	32.6	n.p.	n.p.	115.9	56.8	25.1
GUEST ARRIVALS ('000)							
1999							
June quarter	78.0	24.6	n.p.	n.p.	63.5	40.3	17.9
2000							
April	31.9	12.1	n.p.	n.p.	25.8	14.7	9.5
May	26.3	6.9	n.p.	n.p.	22.6	12.0	5.1
June	23.2	4.8	n.p.	n.p.	17.0	8.3	3.1
June quarter	81.5	23.9	n.p.	n.p.	65.3	34.9	17.8
TAKINGS FROM ACCOMMODATION (\$'000)							
1999							
June quarter	9 395	1 348	n.p.	n.p.	5 234	2 795	934
2000							
April	3 908	683	n.p.	n.p.	1 931	1 233	510
May	3 637	418	n.p.	n.p.	2 120	991	295
June	2 984	276	n.p.	n.p.	1 358	738	186
June quarter	10 529	1 377	n.p.	n.p.	5 409	2 962	991

Period	Darwin	Kakadu	Amhem	Katherine	Tablelands	Petermann	Alice Springs	MacDonnell	Daly	Canberra
ESTABLISHMENTS, CAPACITY AND EMPLOYMENT (number)										
June quarter 1999										
Establishments	35	3	3	10	7	7	22	1	1	55
Guest rooms	2 647	n.p.	n.p.	497	252	n.p.	1 586	n.p.	n.p.	4 686
Bed spaces	7 369	n.p.	n.p.	1 392	670	n.p.	4 866	n.p.	n.p.	14 174
Persons employed	1 697	n.p.	n.p.	207	80	n.p.	823	n.p.	n.p.	2 287
June quarter 2000										
Establishments	34	4	3	10	7	7	22	2	1	60
Guest rooms	2 563	n.p.	n.p.	528	249	n.p.	1 614	n.p.	n.p.	5 032
Bed spaces	7 615	n.p.	n.p.	1 447	685	n.p.	4 935	n.p.	n.p.	15 183
Persons employed	1 575	n.p.	n.p.	228	72	n.p.	754	n.p.	n.p.	2 262
ROOM NIGHTS OCCUPIED ('000)										
1999										
June quarter	156.5	n.p.	n.p.	20.7	8.8	n.p.	77.5	n.p.	n.p.	259.7
2000										
April	47.4	n.p.	n.p.	5.8	2.1	n.p.	27.5	n.p.	n.p.	99.3
May	59.1	n.p.	n.p.	8.0	2.9	n.p.	25.5	n.p.	n.p.	100.6
June	65.7	n.p.	n.p.	9.0	3.2	n.p.	28.2	n.p.	n.p.	96.5
June quarter	172.2	n.p.	n.p.	22.8	8.2	n.p.	81.2	n.p.	n.p.	296.4
ROOM OCCUPANCY RATES (%)										
1999										
June quarter	65.3	n.p.	n.p.	45.7	38.4	n.p.	53.7	n.p.	n.p.	60.9
2000										
April	61.7	n.p.	n.p.	41.9	27.6	n.p.	56.8	n.p.	n.p.	65.8
May	74.3	n.p.	n.p.	48.8	38.2	n.p.	50.9	n.p.	n.p.	64.5
June	85.4	n.p.	n.p.	57.0	43.0	n.p.	58.3	n.p.	n.p.	63.9
June quarter	73.8	n.p.	n.p.	49.6	36.3	n.p.	55.3	n.p.	n.p.	64.7
GUEST NIGHTS ('000)										
1999										
June quarter	256.5	n.p.	n.p.	38.0	14.8	n.p.	132.0	n.p.	n.p.	416.2
2000										
April	79.8	n.p.	n.p.	10.5	4.0	n.p.	49.7	n.p.	n.p.	170.1
May	93.4	n.p.	n.p.	14.9	4.7	n.p.	43.7	n.p.	n.p.	156.7
June	112.0	n.p.	n.p.	17.1	5.6	n.p.	50.1	n.p.	n.p.	160.1
June quarter	285.2	n.p.	n.p.	42.5	14.3	n.p.	143.5	n.p.	n.p.	486.8
GUEST ARRIVALS ('000)										
1999										
June quarter	101.6	n.p.	n.p.	29.9	11.6	n.p.	65.2	n.p.	n.p.	189.0
2000										
April	34.4	n.p.	n.p.	6.3	3.8	n.p.	22.8	n.p.	n.p.	76.4
May	39.3	n.p.	n.p.	9.6	4.3	n.p.	20.7	n.p.	n.p.	73.1
June	44.8	n.p.	n.p.	11.5	5.3	n.p.	24.2	n.p.	n.p.	73.3
June quarter	118.5	n.p.	n.p.	27.4	13.3	n.p.	67.6	n.p.	n.p.	222.8
TAKINGS FROM ACCOMMODATION (\$'000)										
1999										
June quarter	14 772	n.p.	n.p.	1 530	518	n.p.	5 818	n.p.	n.p.	25 382
2000										
April	4 358	n.p.	n.p.	386	131	n.p.	2 182	n.p.	n.p.	9 958
May	5 825	n.p.	n.p.	537	188	n.p.	2 081	n.p.	n.p.	10 201
June	6 934	n.p.	n.p.	634	202	n.p.	2 194	n.p.	n.p.	9 936
June quarter	17 117	n.p.	n.p.	1 558	521	n.p.	6 458	n.p.	n.p.	30 095

	New South Wales	Victoria	Queensland	South Australia	Western Australia	Tasmania	Northern Territory	Australian Capital Territory	Australia
LETTING ENTITIES, CAPACITY AND EMPLOYMENT									
June quarter 1997									
Letting entities(a)	114	15	70	8	4	—	—	2	213
Flats, units and houses									
Single bedroom	354	22	236	6	n.p.	—	—	n.p.	656
Multiple bedroom	6 686	717	4 225	505	n.p.	—	—	n.p.	12 493
Total	7 040	739	4 461	511	n.p.	—	—	n.p.	13 149
Bed spaces	35 786	4 655	20 287	3 160	n.p.	—	—	n.p.	65 543
June quarter 2000									
Letting entities(a)	104	12	61	8	4	—	—	1	190
Flats, units and houses									
Single bedroom	424	20	215	14	n.p.	—	—	n.p.	702
Multiple bedroom	6 517	896	4 015	600	n.p.	—	—	n.p.	12 284
Total	6 941	916	4 230	614	n.p.	—	—	n.p.	12 986
Bed spaces	37 180	5 662	19 860	3 464	n.p.	—	—	n.p.	67 428
UNIT NIGHTS OCCUPIED ('000)									
1997									
June quarter	158.1	5.6	145.6	9.6	n.p.	—	—	n.p.	336.8
2000									
April	92.4	3.9	58.7	5.9	n.p.	—	—	n.p.	165.4
May	54.1	1.1	43.1	2.6	n.p.	—	—	n.p.	104.7
June	50.7	1.6	48.9	2.3	n.p.	—	—	n.p.	107.1
June quarter	197.2	6.6	150.7	10.8	n.p.	—	—	n.p.	377.1
UNIT OCCUPANCY RATES (%)									
1997									
June quarter	24.9	8.3	35.9	20.6	n.p.	—	—	n.p.	28.3
2000									
April	44.4	14.1	46.2	31.9	n.p.	—	—	n.p.	42.4
May	25.1	3.8	32.9	13.8	n.p.	—	—	n.p.	26.0
June	24.3	6.0	38.5	12.6	n.p.	—	—	n.p.	27.5
June quarter	31.2	7.9	39.1	19.4	n.p.	—	—	n.p.	31.9
UNIT LETTINGS ('000)									
1997									
June quarter	22.7	0.9	20.0	1.6	n.p.	—	—	n.p.	46.5
2000									
April	14.8	0.7	9.3	1.4	n.p.	—	—	n.p.	26.8
May	8.7	0.2	6.6	0.6	n.p.	—	—	n.p.	16.5
June	8.9	0.4	7.0	1.0	n.p.	—	—	n.p.	17.7
June quarter	32.4	1.3	23.0	3.0	n.p.	—	—	n.p.	61.0
AVERAGE LENGTH OF STAY (days)									
1997									
June quarter	7.0	6.3	7.3	5.9	n.p.	—	—	n.p.	7.2
2000									
June quarter	6.1	5.2	6.6	3.7	n.p.	—	—	n.p.	6.2
TAKINGS FROM ACCOMMODATION (\$'000)									
1997									
June quarter	6 788	224	5 657	465	n.p.	—	—	n.p.	14 545
2000									
April	5 288	349	3 608	414	n.p.	—	—	n.p.	10 095
May	2 623	59	1 993	172	n.p.	—	—	n.p.	5 171
June	2 497	156	2 320	154	n.p.	—	—	n.p.	5 459
June quarter	10 407	565	7 921	740	n.p.	—	—	n.p.	20 725

(a) The number of real estate agents with 15 or more self-contained units (see Explanatory Notes).

	New South Wales	Victoria	Queensland	South Australia	Western Australia	Tasmania	Northern Territory	Australian Capital Territory	Australia
LETTING ENTITIES, CAPACITY AND EMPLOYMENT									
June quarter 1997									
Letting entities(a)	48	20	297	17	29	13	4	7	435
Flats, units and houses									
Single bedroom	502	446	2 244	130	n.p.	65	73	n.p.	3 810
Multiple bedroom	799	577	7 291	421	n.p.	198	93	n.p.	10 355
Total	1 301	1 023	9 535	551	n.p.	263	166	n.p.	14 165
Bed spaces	5 332	3 769	37 543	2 307	n.p.	1 247	650	n.p.	56 956
Persons employed	459	299	1 384	111	n.p.	73	32	n.p.	2 647
June quarter 2000									
Letting entities(a)	51	18	321	12	24	11	4	4	445
Flats, units and houses									
Single bedroom	435	273	2 871	133	n.p.	50	103	n.p.	4 187
Multiple bedroom	879	546	7 567	199	n.p.	183	93	n.p.	10 301
Total	1 314	819	10 438	332	n.p.	233	196	n.p.	14 488
Bed spaces	5 834	3 390	41 208	1 526	n.p.	1 089	810	n.p.	58 836
Persons employed	465	214	1 554	73	n.p.	62	42	n.p.	2 673
UNIT NIGHTS OCCUPIED ('000)									
1997									
June quarter	57.9	53.4	438.6	28.9	n.p.	11.2	9.5	n.p.	662.6
2000									
April	27.1	16.6	187.8	7.7	n.p.	4.6	3.7	n.p.	273.0
May	18.5	13.0	141.4	5.2	n.p.	3.0	4.3	n.p.	205.4
June	16.9	13.3	167.1	4.6	n.p.	2.2	4.6	n.p.	226.1
June quarter	62.6	42.9	496.3	17.5	n.p.	9.9	12.6	n.p.	704.5
UNIT OCCUPANCY RATES (%)									
1997									
June quarter	48.9	57.4	50.7	57.7	n.p.	46.7	62.7	n.p.	51.5
2000									
April	68.7	67.7	60.0	77.5	n.p.	66.0	63.6	n.p.	62.8
May	45.8	51.2	43.7	50.7	n.p.	41.6	70.1	n.p.	45.8
June	43.8	54.0	53.4	46.1	n.p.	32.1	78.7	n.p.	52.1
June quarter	52.8	57.6	52.3	58.0	n.p.	46.5	70.8	n.p.	53.5
UNIT LETTINGS ('000)									
1997									
June quarter	15.0	10.7	90.0	9.3	n.p.	4.8	1.7	n.p.	146.7
2000									
April	5.8	3.7	36.8	2.5	n.p.	2.3	1.6	n.p.	59.9
May	4.2	3.0	27.8	1.8	n.p.	1.6	1.8	n.p.	45.8
June	4.3	3.1	33.8	1.8	n.p.	1.0	2.2	n.p.	51.7
June quarter	14.4	9.9	98.5	6.1	n.p.	4.9	5.6	n.p.	157.4
AVERAGE LENGTH OF STAY (days)									
1997									
June quarter	3.9	5.0	4.9	3.1	n.p.	2.3	5.7	n.p.	4.5
2000									
June quarter	4.3	4.3	5.0	2.9	n.p.	2.0	2.2	n.p.	4.5
TAKINGS FROM ACCOMMODATION (\$'000)									
1997									
June quarter	4 931	5 328	31 197	2 095	n.p.	655	758	n.p.	48 796
2000									
April	2 376	1 771	14 056	543	n.p.	319	374	n.p.	21 374
May	1 384	1 373	10 010	353	n.p.	183	439	n.p.	15 143
June	1 415	1 448	11 665	293	n.p.	147	495	n.p.	16 714
June quarter	5 175	4 592	35 730	1 189	n.p.	649	1 307	n.p.	53 232

(a) The number of owners or managers with 15 or more self-contained units (see Explanatory Notes).

	New South Wales	Victoria	Queensland	South Australia	Western Australia	Tasmania	Northern Territory	Australian Capital Territory	Australia
LETTING ENTITIES, CAPACITY AND EMPLOYMENT									
June quarter 1997									
Letting entities(a)	162	35	367	25	33	13	4	9	648
Flats, units and houses									
Single bedroom	856	468	2 480	136	289	65	73	99	4 466
Multiple bedroom	7 485	1 294	11 516	926	1 103	198	93	233	22 848
Total	8 341	1 762	13 996	1 062	1 392	263	166	332	27 314
Bed spaces	41 118	8 424	57 830	5 467	6 509	1 247	650	1 254	122 499
Persons employed(b)	459	299	1 384	111	234	73	32	55	2 647
June quarter 2000									
Letting entities(a)	155	30	382	20	28	11	4	5	635
Flats, units and houses									
Single bedroom	859	293	3 086	147	289	50	103	62	4 889
Multiple bedroom	7 396	1 442	11 582	799	915	183	93	175	22 585
Total	8 255	1 735	14 668	946	1 204	233	196	237	27 474
Bed spaces	43 014	9 052	61 068	4 990	5 293	1 089	810	948	126 264
Persons employed(b)	465	214	1 554	73	220	62	42	43	2 673
UNIT NIGHTS OCCUPIED ('000)									
1997									
June quarter	216.1	58.9	584.1	38.5	62.1	11.2	9.5	19.0	999.4
2000									
April	119.4	20.5	246.5	13.6	24.0	4.6	3.7	5.9	438.4
May	72.6	14.1	184.5	7.8	18.0	3.0	4.3	5.7	310.1
June	67.6	14.9	216.0	6.9	15.6	2.2	4.6	5.2	333.1
June quarter	259.7	49.5	647.0	28.4	57.6	9.9	12.6	16.9	1 081.6
UNIT OCCUPANCY RATES (%)									
1997									
June quarter	28.7	36.8	46.0	39.9	49.0	46.7	62.7	62.8	40.3
2000									
April	48.2	39.4	56.0	47.9	66.5	66.0	63.6	83.4	53.2
May	28.4	26.2	40.6	26.7	48.3	41.6	70.1	78.2	36.4
June	27.4	28.6	49.1	24.3	43.1	32.1	78.7	73.7	40.5
June quarter	34.6	31.3	48.5	32.9	52.6	46.5	70.8	78.5	43.3
UNIT LETTINGS ('000)									
1997									
June quarter	37.7	11.6	110.0	10.9	11.6	4.8	1.7	4.9	193.2
2000									
April	20.6	4.4	46.1	3.9	5.8	2.3	1.6	1.9	86.7
May	13.0	3.2	34.5	2.4	3.9	1.6	1.8	2.0	62.3
June	13.2	3.5	40.8	2.8	4.0	1.0	2.2	1.9	69.4
June quarter	46.8	11.1	121.4	9.1	13.8	4.9	5.6	5.7	218.4
AVERAGE LENGTH OF STAY (days)									
1997									
June quarter	5.7	5.1	5.3	3.5	5.3	2.3	5.7	3.9	5.2
2000									
June quarter	5.5	4.4	5.3	3.1	4.2	2.0	2.2	3.0	5.0
TAKINGS FROM ACCOMMODATION (\$'000)									
1997									
June quarter	11 719	5 552	36 853	2 560	3 907	655	758	1 337	63 340
2000									
April	7 664	2 120	17 664	957	1 890	319	374	481	31 469
May	4 006	1 432	12 003	525	1 236	183	439	490	20 314
June	3 912	1 605	13 985	446	1 124	147	495	460	22 173
June quarter	15 582	5 157	43 652	1 929	4 251	649	1 307	1 430	73 957

(a) The number of owners, managers or real estate agents with 15 or more self-contained units (see Explanatory Notes).

(b) Employment numbers exclude real estate agents and their employees.

	New South Wales	Victoria	Queensland	South Australia	Western Australia	Tasmania	Northern Territory	Australian Capital Territory	Australia
ESTABLISHMENTS, CAPACITY AND EMPLOYMENT									
June quarter 1997									
Establishments	375	338	142	129	139	35	28	2	1 186
Capacity									
On-site vans	2 868	1 702	874	735	996	n.p.	105	n.p.	7 453
Other powered sites	42 331	34 968	10 359	11 228	11 919	n.p.	2 410	n.p.	115 687
Unpowered sites	12 534	10 875	5 408	4 786	3 559	n.p.	2 096	n.p.	40 519
Cabins, flats, etc.	3 315	2 320	1 412	1 463	966	n.p.	262	n.p.	10 020
Total Capacity	61 048	49 865	18 053	18 212	17 440	n.p.	4 873	n.p.	173 679
Sites occupied by long-term guests	3 733	1 696	1 744	671	1 226	n.p.	314	n.p.	9 548
Other sites permanently reserved	21 070	15 073	688	1 734	2 236	n.p.	11	n.p.	41 855
Persons employed	1 833	1 285	718	527	681	n.p.	185	n.p.	5 366
June quarter 2000									
Establishments	408	333	141	129	129	36	25	2	1 203
Capacity									
On-site vans	3 293	1 795	1 117	540	809	n.p.	126	n.p.	7 932
Other powered sites	43 066	33 561	10 595	11 194	11 384	n.p.	2 021	n.p.	114 403
Unpowered sites	11 837	9 504	4 491	3 763	2 448	n.p.	1 807	n.p.	35 341
Cabins, flats, etc.	6 022	3 163	1 859	1 741	1 431	n.p.	343	n.p.	15 006
Total Capacity	64 218	48 023	18 062	17 238	16 072	n.p.	4 297	n.p.	172 682
Sites occupied by long-term guests	4 573	1 960	2 000	855	1 304	n.p.	184	n.p.	11 050
Other sites permanently reserved	21 136	15 862	764	2 126	2 411	n.p.	10	n.p.	43 367
Persons employed	2 242	1 364	707	570	759	n.p.	225	n.p.	6 072
SITE NIGHTS OCCUPIED ('000)									
1997									
June quarter	2 879.6	1 837.5	639.2	428.0	586.9	n.p.	155.3	n.p.	6 662.1
2000									
April	1 132.6	769.3	227.6	220.9	222.6	n.p.	34.4	n.p.	2 668.0
May	998.3	653.0	216.2	178.0	198.2	n.p.	50.3	n.p.	2 345.2
June	958.6	617.9	251.3	159.0	204.0	n.p.	71.8	n.p.	2 307.3
June quarter	3 089.5	2 040.2	695.1	557.9	624.7	n.p.	156.5	n.p.	7 320.4
SITE OCCUPANCY RATES (%)									
1997									
June quarter	51.8	40.5	38.9	25.8	37.0	n.p.	35.0	n.p.	42.2
2000									
April	58.8	53.4	42.1	42.7	46.8	n.p.	28.3	n.p.	51.7
May	50.1	43.9	38.7	33.3	40.2	n.p.	37.7	n.p.	43.9
June	49.8	43.0	46.5	30.7	42.3	n.p.	55.7	n.p.	44.6
June quarter	52.9	46.7	42.4	35.6	43.1	n.p.	40.8	n.p.	46.7
TAKINGS FROM ACCOMMODATION (\$'000)									
1997									
June quarter	24 251	11 576	9 349	5 258	7 141	n.p.	2 746	n.p.	61 293
2000									
April	15 130	7 814	3 777	3 531	3 684	n.p.	797	n.p.	35 521
May	9 015	4 181	3 365	2 445	2 728	n.p.	935	n.p.	23 166
June	9 592	4 426	4 032	2 139	2 863	n.p.	1 399	n.p.	24 822
June quarter	33 737	16 421	11 174	8 115	9 275	n.p.	3 130	n.p.	83 508

(a) Comprising establishments with 40 or more powered sites and cabins, etc. (see Explanatory Notes).

	New South Wales	Victoria	Queensland	South Australia	Western Australia	Tasmania	Northern Territory	Australian Capital Territory	Australia
ESTABLISHMENTS, CAPACITY AND EMPLOYMENT									
June quarter 1997									
Establishments	213	111	244	31	75	10	13	2	701
Capacity									
On-site vans	2 985	1 530	3 988	216	884	n.p.	170	n.p.	9 939
Other powered sites	16 792	6 916	17 111	2 482	6 108	n.p.	1 368	n.p.	51 796
Unpowered sites	3 611	1 350	3 436	735	1 429	n.p.	466	n.p.	11 797
Cabins, flats, etc.	1 928	1 242	2 396	330	875	n.p.	89	n.p.	7 075
Total Capacity	25 316	11 038	26 931	3 763	9 296	n.p.	2 093	n.p.	80 607
Sites occupied by long-term guests	10 246	4 206	11 947	1 249	3 869	n.p.	625	n.p.	32 583
Other sites permanently reserved	1 201	328	375	34	277	n.p.	9	n.p.	2 255
Persons employed	942	378	1 056	112	375	n.p.	73	n.p.	3 038
June quarter 2000									
Establishments	164	95	222	22	81	8	21	2	615
Capacity									
On-site vans	2 315	1 158	3 695	171	827	n.p.	125	n.p.	8 500
Other powered sites	12 379	6 179	15 444	2 098	6 816	n.p.	2 125	n.p.	45 762
Unpowered sites	1 992	1 099	2 870	521	1 508	n.p.	811	n.p.	9 266
Cabins, flats, etc.	2 538	1 653	2 872	290	1 277	n.p.	288	n.p.	9 061
Total Capacity	19 224	10 089	24 881	3 080	10 428	n.p.	3 349	n.p.	72 589
Sites occupied by long-term guests	8 511	4 132	10 296	1 190	3 429	n.p.	695	n.p.	28 643
Other sites permanently reserved	849	265	428	36	135	n.p.	3	n.p.	1 734
Persons employed	787	365	1 010	81	385	n.p.	118	n.p.	2 791
SITE NIGHTS OCCUPIED ('000)									
1997									
June quarter	1 229.6	488.0	1 416.1	144.0	455.8	n.p.	80.9	n.p.	3 875.5
2000									
April	354.4	161.5	401.1	45.1	154.0	n.p.	38.8	n.p.	1 175.3
May	341.3	157.5	422.8	44.6	159.9	n.p.	47.7	n.p.	1 192.1
June	333.8	152.7	447.1	42.6	167.3	n.p.	61.6	n.p.	1 221.3
June quarter	1 029.5	471.7	1 270.9	132.3	481.1	n.p.	148.0	n.p.	3 588.6
SITE OCCUPANCY RATES (%)									
1997									
June quarter	53.4	48.6	57.8	42.1	53.9	n.p.	42.5	n.p.	52.8
2000									
April	61.4	53.4	53.7	48.8	49.2	n.p.	38.6	n.p.	54.0
May	57.3	50.4	54.8	46.7	49.5	n.p.	46.0	n.p.	53.0
June	58.0	50.4	59.9	46.1	53.5	n.p.	61.3	n.p.	56.1
June quarter	58.9	51.4	56.1	47.2	50.7	n.p.	48.6	n.p.	54.3
TAKINGS FROM ACCOMMODATION (\$'000)									
1997									
June quarter	14 642	5 457	16 218	1 452	6 527	n.p.	987	n.p.	46 300
2000									
April	5 111	2 151	5 206	533	2 357	n.p.	586	n.p.	16 280
May	4 558	1 972	5 329	509	2 369	n.p.	746	n.p.	15 738
June	4 520	1 961	5 957	504	2 620	n.p.	966	n.p.	16 746
June quarter	14 189	6 084	16 493	1 546	7 346	n.p.	2 298	n.p.	48 764

(a) Comprising establishments with 40 or more powered sites and cabins, etc. (see Explanatory Notes).

	New South Wales	Victoria	Queensland	South Australia	Western Australia	Tasmania	Northern Territory	Australian Capital Territory	Australia
ESTABLISHMENTS, CAPACITY AND EMPLOYMENT									
June quarter 1997									
Establishments	588	449	386	160	214	45	41	4	1 887
Capacity									
On-site vans	5 853	3 232	4 862	951	1 880	282	275	57	17 392
Other powered sites	59 123	41 884	27 470	13 710	18 027	3 033	3 778	458	167 483
Unpowered sites	16 145	12 225	8 844	5 521	4 988	1 614	2 562	417	52 316
Cabins, flats, etc.	5 243	3 562	3 808	1 793	1 841	403	351	94	17 095
<i>Total Capacity</i>	<i>86 364</i>	<i>60 903</i>	<i>44 984</i>	<i>21 975</i>	<i>26 736</i>	<i>5 332</i>	<i>6 966</i>	<i>1 026</i>	<i>254 286</i>
Sites occupied by long-term guests	13 979	5 902	13 691	1 920	5 095	353	939	252	42 131
Other sites permanently reserved	22 271	15 401	1 063	1 768	2 513	1 073	20	1	44 110
Persons employed	2 775	1 663	1 774	639	1 056	180	258	59	8 404
June quarter 2000									
Establishments	572	428	363	151	210	44	46	4	1 818
Capacity									
On-site vans	5 608	2 953	4 812	711	1 636	286	251	175	16 432
Other powered sites	55 445	39 740	26 039	13 292	18 200	2 959	4 146	344	160 165
Unpowered sites	13 829	10 603	7 361	4 284	3 956	1 556	2 618	400	44 607
Cabins, flats, etc.	8 560	4 816	4 731	2 031	2 708	483	631	107	24 067
<i>Total Capacity</i>	<i>83 442</i>	<i>58 112</i>	<i>42 943</i>	<i>20 318</i>	<i>26 500</i>	<i>5 284</i>	<i>7 646</i>	<i>1 026</i>	<i>245 271</i>
Sites occupied by long-term guests	13 084	6 092	12 296	2 045	4 733	335	879	229	39 693
Other sites permanently reserved	21 985	16 127	1 192	2 162	2 546	1 076	13	—	45 101
Persons employed	3 029	1 729	1 717	651	1 144	197	343	53	8 863
SITE NIGHTS OCCUPIED ('000)									
1997									
<i>June quarter</i>	<i>4 109.2</i>	<i>2 325.5</i>	<i>2 055.3</i>	<i>572.0</i>	<i>1 042.7</i>	<i>164.6</i>	<i>236.2</i>	<i>32.1</i>	<i>10 537.6</i>
2000									
April	1 486.9	930.8	628.6	266.0	376.6	69.1	73.2	12.0	3 843.3
May	1 339.7	810.5	639.0	222.6	358.0	58.0	98.0	11.4	3 537.3
June	1 292.4	770.5	698.4	201.6	371.2	51.5	133.3	9.6	3 528.5
<i>June quarter</i>	<i>4 119.0</i>	<i>2 511.8</i>	<i>1 966.0</i>	<i>690.2</i>	<i>1 105.9</i>	<i>178.6</i>	<i>304.5</i>	<i>33.0</i>	<i>10 909.1</i>
SITE OCCUPANCY RATES (%)									
1997									
<i>June quarter</i>	<i>52.3</i>	<i>42.0</i>	<i>50.2</i>	<i>28.6</i>	<i>42.9</i>	<i>33.9</i>	<i>37.3</i>	<i>34.4</i>	<i>45.5</i>
2000									
April	59.4	53.4	48.8	43.6	47.8	43.6	33.0	39.1	52.3
May	51.8	45.1	48.1	35.3	43.8	35.4	41.3	35.9	46.6
June	51.7	44.3	54.3	33.1	46.7	33.1	58.1	31.0	48.0
<i>June quarter</i>	<i>54.3</i>	<i>47.5</i>	<i>50.4</i>	<i>37.3</i>	<i>46.1</i>	<i>37.4</i>	<i>44.2</i>	<i>35.3</i>	<i>48.9</i>
TAKINGS FROM ACCOMMODATION (\$'000)									
1997									
<i>June quarter</i>	<i>38 893</i>	<i>17 032</i>	<i>25 567</i>	<i>6 709</i>	<i>13 668</i>	<i>1 388</i>	<i>3 733</i>	<i>601</i>	<i>107 593</i>
2000									
April	20 241	9 965	8 983	4 064	6 041	857	1 383	267	51 801
May	13 573	6 153	8 694	2 954	5 097	519	1 681	233	38 904
June	14 112	6 388	9 989	2 643	5 483	411	2 365	179	41 568
<i>June quarter</i>	<i>47 927</i>	<i>22 505</i>	<i>27 666</i>	<i>9 661</i>	<i>16 620</i>	<i>1 786</i>	<i>5 428</i>	<i>678</i>	<i>132 272</i>

(a) Comprising establishments with 40 or more powered sites and cabins, etc. (see Explanatory Notes).

	New South Wales	Victoria	Queensland	South Australia	Western Australia	Tasmania	Northern Territory	Australian Capital Territory(b)	Australia
ESTABLISHMENTS, CAPACITY AND EMPLOYMENT									
June quarter 1997									
Establishments	78	37	125	35	47	29	32	—	383
Bed spaces	6 617	3 175	9 621	2 331	3 063	1 789	3 235	—	29 831
Persons employed	364	198	795	152	132	102	156	—	1 899
June quarter 2000									
Establishments	103	62	147	28	71	27	29	—	467
Bed spaces	9 413	5 837	12 861	1 993	4 503	1 668	3 140	—	39 415
Persons employed	615	355	1 112	114	255	153	251	—	2 855
GUEST NIGHTS									
1997									
June quarter	322 564	114 114	467 879	57 996	113 139	22 840	138 634	—	1 237 166
2000									
April	167 728	77 268	209 746	28 365	70 945	12 764	51 382	—	618 198
May	148 621	64 889	210 902	22 612	62 906	6 640	54 950	—	571 520
June	136 569	55 795	224 692	21 054	57 377	4 976	62 980	—	563 443
June quarter	452 918	197 952	645 340	72 031	191 228	24 380	169 312	—	1 753 161
BED OCCUPANCY RATES (%)									
1997									
June quarter	53.6	39.5	53.8	27.3	41.1	14.1	47.1	—	45.7
2000									
April	59.4	44.1	54.5	47.4	52.8	25.5	55.1	—	52.4
May	50.9	35.9	52.9	36.6	45.1	12.8	56.5	—	46.8
June	48.4	31.9	58.3	35.2	42.5	9.9	66.9	—	47.7
June quarter	52.9	37.3	55.2	39.7	46.8	16.1	59.4	—	48.9
GUEST ARRIVALS									
1997									
June quarter	113 454	44 015	166 417	24 818	33 640	13 258	68 613	—	464 215
2000									
April	60 356	26 036	80 624	11 833	21 391	7 757	26 067	—	234 064
May	50 804	22 067	80 625	10 194	17 405	4 242	26 090	—	211 427
June	49 249	18 091	87 618	9 251	15 994	3 162	30 028	—	213 393
June quarter	160 409	66 194	248 867	31 278	54 790	15 161	82 185	—	658 884
AVERAGE LENGTH OF STAY (DAYS)									
1997									
June quarter	2.8	2.6	2.8	2.3	3.4	1.7	2.0	—	2.7
2000									
April	2.8	3.0	2.6	2.4	3.3	1.6	2.0	—	2.6
May	2.9	2.9	2.6	2.2	3.6	1.6	2.1	—	2.7
June	2.8	3.1	2.6	2.3	3.6	1.6	2.1	—	2.6
June quarter	2.8	3.0	2.6	2.3	3.5	1.6	2.1	—	2.7
TAKINGS FROM ACCOMMODATION (\$'000)									
1997									
June quarter	5 170	1 620	6 488	658	1 414	270	2 034	—	17 656
2000									
April	3 320	1 283	3 315	429	1 039	191	770	—	10 348
May	2 910	1 125	3 350	347	944	109	918	—	9 703
June	2 727	958	3 596	322	862	87	1 022	—	9 573
June quarter	8 956	3 366	10 261	1 098	2 845	387	2 710	—	29 624

(a) Comprising establishments with 25 or more bed spaces (see Explanatory Notes).

(b) Australian Capital Territory data included with New South Wales.

NOTE!
Revised data for
March quarter 2000.
See 'Data Revision' note
on page 2.

	New South Wales	Victoria	Queensland	South Australia	Western Australia	Tasmania	Northern Territory	Australian Capital Territory	Australia
LETTING ENTITIES, CAPACITY AND EMPLOYMENT									
March quarter 1997									
Letting entities(a)	118	19	71	8	4	—	—	2	222
Flats, units and houses									
Single bedroom	363	40	239	10	n.p.	—	—	n.p.	690
Multiple bedroom	7 034	999	4 296	558	n.p.	—	—	n.p.	13 244
Total	7 397	1 039	4 535	568	n.p.	—	—	n.p.	13 934
Bed spaces	37 637	6 339	20 590	3 145	n.p.	—	—	n.p.	69 368
March quarter 2000									
Letting entities(a)	108	14	62	8	4	—	—	1	197
Flats, units and houses									
Single bedroom	506	22	181	7	n.p.	—	—	n.p.	744
Multiple bedroom	6 812	971	4 131	614	n.p.	—	—	n.p.	12 790
Total	7 318	993	4 312	621	n.p.	—	—	n.p.	13 534
Bed spaces	38 290	6 003	20 021	3 055	n.p.	—	—	n.p.	68 737
UNIT NIGHTS OCCUPIED ('000)									
1997									
March quarter	307.7	24.9	194.9	20.6	n.p.	—	—	n.p.	567.1
2000									
January	164.7	15.3	86.4	12.0	n.p.	—	—	n.p.	283.8
February	88.0	3.3	47.6	4.1	n.p.	—	—	n.p.	146.8
March	77.2	2.6	52.3	3.2	n.p.	—	—	n.p.	139.3
March quarter	329.8	21.2	186.3	19.3	n.p.	—	—	n.p.	569.9
UNIT OCCUPANCY RATES (%)									
1997									
March quarter	46.4	26.6	47.9	40.3	n.p.	—	—	n.p.	45.3
2000									
January	72.6	49.7	64.6	62.3	n.p.	—	—	n.p.	67.6
February	41.5	11.6	38.3	22.8	n.p.	—	—	n.p.	37.5
March	34.0	8.4	39.3	16.4	n.p.	—	—	n.p.	33.3
March quarter	49.5	23.5	47.6	34.1	n.p.	—	—	n.p.	46.3
UNIT LETTINGS ('000)									
1997									
March quarter	39.6	3.6	23.9	3.0	n.p.	—	—	n.p.	71.4
2000									
January	19.8	1.9	11.0	1.8	n.p.	—	—	n.p.	35.2
February	12.3	0.5	6.7	1.1	n.p.	—	—	n.p.	21.0
March	11.6	0.6	7.6	1.0	n.p.	—	—	n.p.	21.2
March quarter	43.6	3.0	25.4	3.8	n.p.	—	—	n.p.	77.4
AVERAGE LENGTH OF STAY (days)									
1997									
March quarter	7.8	7.0	8.2	7.0	n.p.	—	—	n.p.	7.9
2000									
March quarter	7.6	7.0	7.3	5.0	n.p.	—	—	n.p.	7.4
TAKINGS FROM ACCOMMODATION (\$'000)									
1997									
March quarter	18 658	1 713	9 777	1 290	n.p.	—	—	n.p.	33 021
2000									
January	12 760	1 429	r 6 460	818	n.p.	—	—	n.p.	r 21 952
February	4 852	243	r 2 453	273	n.p.	—	—	n.p.	r 8 255
March	4 182	153	r 2 714	212	n.p.	—	—	n.p.	r 7 762
March quarter	21 794	1 825	r 11 627	1 303	n.p.	—	—	n.p.	r 37 969

(a) The number of real estate agents with 15 or more self-contained units (see Explanatory Notes).

NOTE!
Revised data for
March quarter 2000.
See 'Data Revision' note
on page 2.

	New South Wales	Victoria	Queensland	South Australia	Western Australia	Tasmania	Northern Territory	Australian Capital Territory	Australia
LETTING ENTITIES, CAPACITY AND EMPLOYMENT									
March quarter 1997									
Letting entities(a)	51	20	288	16	29	13	4	7	428
Flats, units and houses									
Single bedroom	498	444	2 186	130	n.p.	59	70	n.p.	3 743
Multiple bedroom	858	555	7 168	372	n.p.	203	93	n.p.	10 205
Total	1 356	999	9 354	502	n.p.	262	163	n.p.	13 948
Bed spaces	5 644	3 570	36 589	2 117	n.p.	1 247	648	n.p.	55 777
Persons employed	511	273	1 429	141	n.p.	87	33	n.p.	2 757
March quarter 2000									
Letting entities(a)	49	16	323	12	26	11	4	5	446
Flats, units and houses									
Single bedroom	429	264	2 847	124	n.p.	46	103	n.p.	4 132
Multiple bedroom	809	505	7 871	196	n.p.	187	93	n.p.	10 587
Total	1 238	769	10 718	320	n.p.	233	196	n.p.	14 719
Bed spaces	5 302	3 056	34 361	1 425	n.p.	1 101	810	n.p.	58 458
Persons employed	436	202	1 517	82	n.p.	70	39	n.p.	2 701
UNIT NIGHTS OCCUPIED ('000)									
1997									
March quarter	78.4	61.5	513.7	31.3	n.p.	18.2	7.8	n.p.	786.4
2000									
January	29.4	16.7	245.6	7.5	n.p.	5.6	4.1	n.p.	336.9
February	20.5	14.1	156.9	6.4	n.p.	4.6	4.2	n.p.	229.4
March	23.1	16.6	172.5	6.6	n.p.	5.3	4.4	n.p.	252.9
March quarter	73.0	47.4	575.0	20.5	n.p.	15.5	12.8	n.p.	819.2
UNIT OCCUPANCY RATES (%)									
1997									
March quarter	64.2	68.4	61.0	69.2	n.p.	77.2	53.0	n.p.	62.6
2000									
January	76.6	70.2	74.3	76.0	n.p.	77.3	67.8	n.p.	74.1
February	57.1	63.1	50.8	68.8	n.p.	68.7	74.4	n.p.	54.0
March	60.2	69.6	52.0	66.2	n.p.	73.2	72.6	n.p.	55.5
March quarter	64.8	67.7	59.2	70.4	n.p.	73.2	71.6	n.p.	61.4
UNIT LETTINGS ('000)									
1997									
March quarter	18.4	10.2	95.9	8.3	n.p.	7.9	1.3	n.p.	159.1
2000									
January	5.7	3.1	42.4	1.7	n.p.	2.2	1.8	n.p.	64.3
February	5.0	2.7	30.6	1.9	n.p.	2.0	2.0	n.p.	50.7
March	5.4	3.3	34.0	2.2	n.p.	2.4	2.1	n.p.	56.5
March quarter	16.1	9.0	107.0	5.8	n.p.	6.7	5.8	n.p.	171.4
AVERAGE LENGTH OF STAY (days)									
1997									
March quarter	4.3	6.0	5.4	3.8	n.p.	2.3	6.1	n.p.	4.9
2000									
March quarter	4.5	5.3	5.4	3.6	n.p.	2.3	2.2	n.p.	4.8
TAKINGS FROM ACCOMMODATION (\$'000)									
1997									
March quarter	7 354	6 269	40 810	2 437	n.p.	1 220	452	n.p.	63 658
2000									
January	3 006	1 755	22 092	567	n.p.	440	350	n.p.	30 392
February	1 668	1 474	12 269	444	n.p.	317	337	n.p.	18 465
March	1 849	1 709	12 601	466	n.p.	350	342	n.p.	19 283
March quarter	6 522	4 937	46 961	1 476	n.p.	1 107	1 029	n.p.	68 140

(a) The number of owners or managers with 15 or more self-contained units (see Explanatory Notes).

NOTE!
Revised data for
March quarter 2000.
See 'Data Revision' note
on page 2.

	New South Wales	Victoria	Queensland	South Australia	Western Australia	Tasmania	Northern Territory	Australian Capital Territory	Australia
LETTING ENTITIES, CAPACITY AND EMPLOYMENT									
March quarter 1997									
Letting entities(a)	169	39	359	24	33	13	4	9	650
Flats, units and houses									
Single bedroom	861	484	2 425	140	296	59	70	98	4 433
Multiple bedroom	7 892	1 554	11 464	930	1 079	203	93	234	23 449
Total	8 753	2 038	13 889	1 070	1 375	262	163	332	27 882
Bed spaces	43 281	9 909	57 179	5 262	6 438	1 247	648	1 181	125 145
Persons employed(b)	511	273	1 429	141	237	87	33	46	2 757
March quarter 2000									
Letting entities(a)	157	30	385	20	30	11	4	6	643
Flats, units and houses									
Single bedroom	935	286	3 028	131	277	46	103	70	4 876
Multiple bedroom	7 621	1 476	12 002	810	994	187	93	194	23 377
Total	8 556	1 762	15 030	941	1 271	233	196	264	28 253
Bed spaces	43 592	9 059	r 61 382	4 480	5 723	1 101	810	1 048	r 127 195
Persons employed(b)	436	202	1 517	82	294	70	39	61	2 701
UNIT NIGHTS OCCUPIED ('000)									
1997									
March quarter	386.1	86.4	708.6	51.9	75.6	18.2	7.8	19.0	1 353.5
2000									
January	194.1	32.0	332.0	19.5	26.9	5.6	4.1	6.4	620.6
February	108.5	17.4	204.5	10.5	20.2	4.6	4.2	6.3	376.2
March	100.3	19.2	224.7	9.7	22.2	5.3	4.4	6.4	392.3
March quarter	402.9	68.6	761.2	39.7	69.4	15.5	12.8	19.1	1 389.1
UNIT OCCUPANCY RATES (%)									
1997									
March quarter	49.1	47.1	56.7	53.9	61.1	77.2	53.0	63.7	54.0
2000									
January	73.2	58.6	71.5	67.0	68.3	77.3	67.8	77.9	71.0
February	43.7	34.1	47.2	38.4	54.8	68.7	74.4	81.9	46.1
March	37.8	35.1	48.4	33.3	56.5	73.2	72.6	78.5	44.9
March quarter	51.7	42.8	55.9	46.4	60.0	73.2	71.6	79.4	54.2
UNIT LETTINGS ('000)									
1997									
March quarter	58.0	13.7	119.8	11.3	13.6	7.9	1.3	4.8	230.5
2000									
January	25.5	5.0	53.5	3.5	5.7	2.2	1.8	2.2	99.4
February	17.4	3.2	37.3	2.9	4.8	2.0	2.0	2.1	71.7
March	16.9	3.8	41.7	3.2	5.4	2.4	2.1	2.2	77.7
March quarter	59.8	12.0	132.4	9.6	16.0	6.7	5.8	6.5	248.8
AVERAGE LENGTH OF STAY (days)									
1997									
March quarter	6.7	6.3	5.9	4.6	5.5	2.3	6.1	4.0	5.9
2000									
March quarter	6.7	5.7	5.7	4.1	4.3	2.3	2.2	3.0	5.6
TAKINGS FROM ACCOMMODATION (\$'000)									
1997									
March quarter	26 012	7 982	50 586	3 727	5 250	1 220	452	1 450	96 679
2000									
January	15 766	3 184	r 28 552	1 385	2 071	440	350	597	r 52 344
February	6 520	1 716	r 14 722	717	1 850	317	337	541	r 26 720
March	6 031	1 861	r 15 314	678	1 908	350	342	562	r 27 046
March quarter	28 316	6 762	r 58 588	2 779	5 828	1 107	1 029	1 699	r 106 110

(a) The number of owners, managers or real estate agents with 15 or more self-contained units (see Explanatory Notes).

(b) Employment numbers exclude real estate agents and their employees.

NOTE!

Revised data for
March quarter 2000.
See 'Data Revision' note
on page 2.

STAR GRADING

Period	Licensed hotels with facilities	Motels and guest houses	Serviced apartments	1	2	3	4	5	Ungraded	Total
ESTABLISHMENTS, CAPACITY AND EMPLOYMENT (number)										
March quarter 1999										
Establishments	753	2 386	564	74	566	1 864	705	66	428	3 703
Guest rooms	71 637	84 614	27 610	2 202	16 513	69 905	58 580	16 423	20 238	183 861
Bed spaces	193 366	251 693	96 217	6 757	49 761	209 625	175 353	44 190	55 590	541 276
Persons employed	70 611	30 938	10 074	866	6 768	27 595	38 578	29 157	8 659	111 623
March quarter 2000										
Establishments	767	2 411	611	69	508	1 825	805	87	495	3 789
Guest rooms	73 760	85 821	31 542	2 122	14 552	71 153	62 661	21 508	19 127	191 123
Bed spaces	197 179	254 335	107 951	6 672	43 379	213 429	184 349	57 035	54 601	559 465
Persons employed	72 728	31 464	10 807	860	5 996	29 470	36 527	34 997	7 149	114 999
ROOM NIGHTS OCCUPIED ('000)										
1999										
March quarter	4 003.5	4 083.2	1 499.1	66.6	656.7	3 484.8	3 456.1	1 052.6	869.0	9 585.8
2000										
January	1 298.3	1 352.1	609.3	22.2	201.5	1 192.5	1 164.0	437.9	241.5	3 259.7
February	1 403.5	1 294.9	524.6	20.0	181.1	1 112.6	1 206.7	463.4	239.2	3 223.0
March	1 536.8	1 490.8	577.7	23.8	206.3	1 281.3	1 333.0	491.8	269.0	3 605.3
March quarter	4 238.7	4 137.8	1 711.6	66.0	588.9	3 586.5	3 703.7	1 393.1	749.7	10 088.1
ROOM OCCUPANCY RATES (%)										
1999										
March quarter	62.4	53.7	60.6	33.6	44.3	55.4	65.6	71.2	49.0	58.1
2000										
January	57.1	50.9	63.1	33.8	44.8	54.1	59.9	65.7	42.9	55.3
February	65.7	52.1	57.7	32.6	43.1	53.9	66.4	74.4	43.9	58.3
March	67.3	56.1	59.2	36.2	46.0	58.1	68.6	73.9	45.6	60.9
March quarter	63.3	53.1	60.0	34.2	44.6	55.4	65.0	71.3	44.2	58.2
GUEST NIGHTS ('000)										
1999										
March quarter	6 575.5	7 276.1	3 260.9	108.3	1 224.3	6 463.7	6 094.3	1 740.7	1 481.3	17 112.5
2000										
January	2 346.1	2 663.6	1 527.8	41.3	396.4	2 461.1	2 355.0	810.3	473.4	6 537.5
February	2 203.7	2 134.4	1 079.2	32.3	307.0	1 936.4	2 001.2	742.6	397.8	5 417.3
March	2 399.8	2 497.0	1 184.9	41.2	360.5	2 237.6	2 207.1	780.8	454.6	6 081.8
March quarter	6 949.6	7 295.0	3 791.9	114.8	1 063.9	6 635.1	6 563.3	2 333.6	1 325.8	18 036.5
BED OCCUPANCY RATES (%)										
1999										
March quarter	38.0	32.2	37.8	17.8	27.4	34.3	38.6	43.8	30.3	35.2
2000										
January	38.6	33.9	46.1	20.0	29.5	37.2	41.2	45.9	29.4	37.9
February	38.6	29.0	34.7	16.7	24.5	31.3	37.4	45.0	25.6	33.5
March	39.3	31.7	35.4	19.9	27.0	33.8	38.6	44.3	27.0	35.1
March quarter	38.9	31.6	38.8	18.9	27.1	34.2	39.1	45.0	27.4	35.5

(a) Comprising establishments with 15 or more rooms or units (see Explanatory Notes).

NOTE!

Revised data for
March quarter 2000.
See 'Data Revision' note
on page 2.

STAR GRADING

Period	Licensed hotels with facilities	Motels and guest houses	Serviced apartments	1	2	3	4	5	Ungraded	Total
GUEST ARRIVALS ('000)										
1999										
March quarter	2 782.9	3 939.4	875.3	56.3	680.1	3 248.9	2 441.5	623.1	547.8	7 597.6
2000										
January	947.8	1 419.3	361.7	21.8	222.8	1 164.1	883.7	254.8	181.6	2 728.9
February	981.2	1 164.4	297.4	16.4	174.1	950.3	859.4	280.9	161.9	2 443.0
March	1 060.1	1 363.0	335.9	21.1	205.3	1 108.5	947.2	290.5	186.3	2 758.9
March quarter	2 989.1	3 946.8	995.0	59.3	602.3	3 222.9	2 690.3	826.2	529.8	7 930.8
AVERAGE LENGTH OF STAY (days)										
1999										
March quarter	2.4	1.8	3.7	1.9	1.8	2.0	2.5	2.8	2.7	2.3
2000										
March quarter	2.3	1.8	3.8	1.9	1.8	2.1	2.4	2.8	2.5	2.3
TAKINGS FROM ACCOMMODATION (\$'000)										
1999										
March quarter	514 165	322 196	166 699	3 351	41 190	277 421	401 708	194 304	85 086	1 003 060
2000										
January	171 527	r 113 047	72 729	1 258	12 951	104 449	r 138 462	79 195	20 988	r 357 302
February	181 923	r 104 485	56 901	1 087	10 748	91 472	r 138 052	81 920	20 029	r 343 308
March	203 375	r 120 359	63 973	1 273	12 086	104 860	r 156 636	89 898	22 955	r 387 707
March quarter	556 825	r 337 890	193 602	3 617	35 785	300 781	r 433 149	251 013	63 972	r 1 088 317
AVERAGE TAKINGS PER ROOM NIGHT OCCUPIED (\$) (b)										
1999										
March quarter	128.4	78.9	111.2	50.4	62.7	79.6	116.2	184.6	97.9	104.6
2000										
January	132.1	r 83.6	119.4	56.6	64.3	87.6	r 119.0	180.9	86.9	r 109.6
February	129.6	r 80.7	108.5	54.2	59.3	82.2	r 114.4	176.8	83.7	r 106.5
March	132.3	r 80.7	110.7	53.5	58.6	81.8	r 117.5	182.8	85.3	r 107.5
March quarter	131.4	r 81.7	113.1	54.8	60.8	83.9	r 117.0	180.2	85.3	r 107.9
AVERAGE TAKINGS PER AVAILABLE ROOM NIGHT (\$) (b)										
1999										
March quarter	80.2	42.4	67.4	16.9	27.8	44.1	76.2	131.5	48.0	60.8
2000										
January	75.5	r 42.6	75.3	19.1	28.8	47.4	r 71.3	118.8	37.3	r 60.6
February	85.1	r 42.1	62.6	17.7	25.6	44.3	r 76.0	131.6	36.8	r 62.1
March	89.1	r 45.3	65.5	19.4	26.9	47.6	r 80.7	135.1	38.9	r 65.5
March quarter	83.2	r 43.3	67.9	18.7	27.1	46.5	r 76.0	128.4	37.7	r 62.8

(a) Comprising establishments with 15 or more rooms or units (see Explanatory Notes).

(b) Including bed tax where applicable.

NOTE!

Revised data for
March quarter 2000.
See 'Data Revision' note
on page 2.

STAR GRADING

Period	Licensed hotels with facilities	Motels and guest houses	Serviced apartments	1	2	3	4	5	Ungraded	Total
ESTABLISHMENTS, CAPACITY AND EMPLOYMENT (number)										
March quarter 1999										
Establishments	117	501	68	11	93	388	148	10	36	686
Guest rooms	10 340	16 117	3 703	242	2 548	12 299	10 810	2 930	1 331	30 160
Bed spaces	25 284	47 112	11 024	654	7 982	35 140	28 947	6 597	4 100	83 420
Persons employed	13 826	5 814	1 489	156	927	4 457	6 335	8 618	636	21 129
March quarter 2000										
Establishments	125	506	76	9	81	376	173	15	53	707
Guest rooms	10 895	16 254	4 183	217	2 126	12 078	11 502	3 456	1 953	31 332
Bed spaces	26 282	47 232	12 620	585	6 586	34 610	30 749	7 783	5 821	86 134
Persons employed	14 016	5 904	1 578	125	780	4 467	6 552	8 771	803	21 498
ROOM NIGHTS OCCUPIED ('000)										
1999										
March quarter	653.6	793.8	233.3	7.9	95.1	624.6	685.6	209.6	58.1	1 680.8
2000										
January	212.8	253.9	89.1	2.4	26.7	199.6	222.0	77.6	27.6	555.8
February	230.7	248.4	84.7	1.9	23.9	183.9	241.6	82.9	29.6	563.8
March	260.5	294.3	99.0	2.4	29.6	222.4	276.4	89.1	33.8	653.7
March quarter	704.0	796.5	272.8	6.7	80.3	605.9	740.0	249.5	91.0	1 773.4
ROOM OCCUPANCY RATES (%)										
1999										
March quarter	70.2	54.7	71.0	36.2	41.7	56.4	70.5	79.5	49.9	62.0
2000										
January	63.0	50.4	69.4	35.6	40.5	53.3	62.3	72.4	46.5	57.3
February	73.0	52.8	70.5	29.9	38.8	52.5	72.4	82.7	53.8	62.2
March	77.1	58.4	76.4	36.2	44.9	59.4	77.5	83.1	55.9	67.3
March quarter	71.0	53.9	72.1	34.0	41.5	55.1	70.7	79.3	52.0	62.3
GUEST NIGHTS ('000)										
1999										
March quarter	993.7	1 401.3	442.0	13.3	185.5	1 128.3	1 118.4	287.7	103.9	2 837.0
2000										
January	342.8	495.7	191.9	4.8	53.8	395.8	412.1	116.1	47.9	1 030.4
February	337.8	407.6	150.0	3.5	42.3	313.1	373.6	117.0	45.8	895.4
March	384.2	496.5	175.9	4.7	55.5	385.7	431.7	126.9	52.0	1 056.6
March quarter	1 064.8	1 399.8	517.8	13.0	151.6	1 094.6	1 217.4	360.1	145.8	2 982.4
BED OCCUPANCY RATES (%)										
1999										
March quarter	43.7	33.0	45.0	22.6	25.9	35.7	42.9	48.5	28.7	37.8
2000										
January	42.1	33.9	49.6	26.2	26.3	36.9	43.2	48.1	27.2	38.7
February	44.3	29.8	41.5	20.8	22.1	31.2	41.9	51.9	28.3	35.9
March	47.2	33.9	45.0	26.1	27.2	35.9	45.3	52.6	28.9	39.6
March quarter	44.5	32.6	45.4	24.5	25.3	34.8	43.5	50.8	28.1	38.1

(a) Comprising establishments with 15 or more rooms or units (see Explanatory Notes).

NOTE!
Revised data for
March quarter 2000.
See 'Data Revision' note
on page 2.

STAR GRADING

Period	Licensed hotels with facilities	Motels and guest houses	Serviced apartments	1	2	3	4	5	Ungraded	Total
GUEST ARRIVALS ('000)										
1999										
March quarter	451.8	775.4	131.4	7.4	112.5	589.3	506.2	110.5	32.7	1 358.6
2000										
January	146.8	268.3	48.5	2.7	32.3	194.2	176.0	42.5	16.0	463.7
February	157.1	230.6	45.1	2.1	26.1	161.8	176.0	50.2	16.6	432.8
March	176.7	277.6	54.6	2.8	33.2	200.6	199.6	53.7	18.9	508.9
March quarter	480.7	776.5	148.2	7.6	91.6	556.6	551.5	146.4	51.5	1 405.4
AVERAGE LENGTH OF STAY (days)										
1999										
March quarter	2.2	1.8	3.4	1.8	1.6	1.9	2.2	2.6	3.2	2.1
2000										
March quarter	2.2	1.8	3.5	1.7	1.7	2.0	2.2	2.5	2.8	2.1
TAKINGS FROM ACCOMMODATION (\$'000)										
1999										
March quarter	96 321	67 486	31 766	401	5 792	50 442	87 283	44 905	6 751	195 573
2000										
January	30 275	r 22 359	12 366	125	1 731	16 882	r 27 268	15 705	3 289	r 65 001
February	33 340	r 21 372	11 204	103	1 489	14 431	r 29 453	16 865	3 574	r 65 916
March	41 886	r 25 944	14 240	138	1 805	18 242	r 37 546	19 977	4 361	r 82 069
March quarter	105 501	r 69 674	37 811	367	5 026	49 555	r 94 267	52 547	11 224	r 212 986
AVERAGE TAKINGS PER ROOM NIGHT OCCUPIED (\$)										
1999										
March quarter	147.4	85.0	136.1	50.9	60.9	80.8	127.3	214.3	116.2	116.4
2000										
January	142.3	r 88.1	138.7	52.2	64.8	84.6	r 122.8	202.5	119.1	r 116.9
February	144.5	r 86.1	132.2	54.8	62.2	78.5	r 121.9	203.5	120.9	r 116.9
March	160.8	r 88.2	143.9	56.8	61.0	82.0	r 135.8	224.3	128.9	r 125.5
March quarter	149.8	r 87.5	138.6	54.6	62.6	81.8	r 127.4	210.6	123.3	r 120.1
AVERAGE TAKINGS PER AVAILABLE ROOM NIGHT (\$)										
1999										
March quarter	103.5	46.5	96.6	18.4	25.4	45.6	89.7	170.3	58.0	72.2
2000										
January	89.6	r 44.4	96.2	18.6	26.3	45.1	r 76.5	146.6	55.4	r 67.0
February	105.5	r 45.4	93.2	16.4	24.2	41.2	r 88.3	168.3	65.0	r 72.7
March	124.0	r 51.5	109.8	20.6	27.4	48.7	r 105.3	186.5	72.1	r 84.5
March quarter	106.4	r 47.1	99.9	18.6	26.0	45.1	r 90.1	167.1	64.2	r 74.8

(a) Comprising establishments with 15 or more rooms or units (see Explanatory Notes).

NOTE!

Revised data for
March quarter 2000.
See 'Data Revision' note
on page 2.

Period	Melbourne	Wimmera	Mallee	Western	Western Grampians	Bendigo Loddon	Peninsula	Central Murray	Goulburn	High Country
ESTABLISHMENTS, CAPACITY AND EMPLOYMENT (number)										
March quarter 1999										
Establishments	213	6	42	56	21	28	20	21	27	73
Guest rooms	17 019	117	1 275	1 499	496	698	661	558	677	1 944
Bed spaces	42 996	332	3 888	4 725	1 441	2 147	1 841	1 600	2 006	7 039
Persons employed	15 422	30	492	743	200	320	378	163	349	568
March quarter 2000										
Establishments	230	6	43	56	20	31	20	21	27	72
Guest rooms	17 994	117	1 300	1 512	484	779	681	561	698	1 924
Bed spaces	45 252	335	3 964	4 657	1 394	2 375	1 800	1 705	2 070	7 035
Persons employed	15 583	29	486	788	204	362	403	161	371	572
ROOM NIGHTS OCCUPIED ('000)										
1999										
March quarter	1 112.2	3.2	49.4	92.7	20.9	32.1	32.0	25.8	30.7	49.8
2000										
January	367.4	1.2	17.9	33.3	5.7	11.4	10.4	9.1	10.5	17.5
February	389.3	1.0	15.9	27.3	6.5	11.3	9.8	7.4	10.3	13.4
March	445.2	1.6	19.6	29.2	8.7	14.5	10.9	9.9	11.6	18.1
March quarter	1 201.9	3.9	53.4	89.8	20.9	37.2	31.1	26.4	32.3	49.1
ROOM OCCUPANCY RATES (%)										
1999										
March quarter	72.8	30.5	43.0	68.7	46.7	51.0	53.8	51.3	50.3	28.5
2000										
January	65.9	33.4	44.5	71.0	37.9	49.4	49.5	52.4	48.5	29.4
February	74.6	30.9	42.1	62.2	46.6	52.7	49.6	45.4	50.7	24.0
March	79.8	45.3	48.7	62.3	58.1	60.2	51.6	57.2	53.5	30.4
March quarter	73.4	36.6	45.1	65.3	47.5	54.2	50.2	51.8	50.9	28.0
GUEST NIGHTS ('000)										
1999										
March quarter	1 765.1	5.7	85.3	194.8	35.1	59.0	62.1	47.4	50.2	109.9
2000										
January	639.5	2.1	35.7	75.3	10.9	23.0	18.7	19.1	18.4	38.8
February	599.4	1.5	25.0	51.4	10.1	18.8	15.3	13.6	16.1	26.0
March	692.5	2.6	31.4	54.7	14.2	25.8	16.2	17.7	18.3	35.2
March quarter	1 931.4	6.2	92.2	181.5	35.1	67.6	50.1	50.4	52.8	100.0
GUEST ARRIVALS ('000)										
1999										
March quarter	724.6	4.7	53.5	106.5	27.4	41.1	30.4	28.4	32.8	58.6
2000										
January	235.4	1.7	19.9	42.1	8.8	15.7	9.0	12.0	11.8	18.1
February	248.8	1.2	14.9	33.0	7.7	13.5	8.6	8.6	11.4	14.0
March	283.2	1.9	19.5	35.8	10.0	17.6	9.3	11.0	12.7	19.1
March quarter	767.5	4.9	54.4	110.9	26.5	46.7	26.9	31.6	35.9	51.2
TAKINGS FROM ACCOMMODATION (\$'000)										
1999										
March quarter	150 110	164	3 165	8 194	1 363	2 443	3 788	1 854	2 021	3 916
2000										
January	48 782	63	1 189	3 308	406	872	1 380	708	709	1 468
February	51 630	52	1 041	2 371	460	867	1 248	552	695	993
March	65 189	82	1 257	2 495	619	1 154	1 362	720	808	1 339
March quarter	165 602	197	3 487	8 174	1 486	2 892	3 990	1 980	2 212	3 800

NOTE!
Revised data for
March quarter 2000.
See 'Data Revision' note
on page 2.

Period	Lakes	Gippsland	Melbourne East	Geelong	Macedon	Spa Country	Ballarat	Central Highlands	Upper Yarra	Murray East	Phillip Island
ESTABLISHMENTS, CAPACITY AND EMPLOYMENT (number)											
March quarter 1999											
Establishments	24	37	13	22	3	5	24	15	13	14	9
Guest rooms	662	1 054	406	694	91	119	806	359	425	320	280
Bed spaces	1 982	3 060	947	2 024	195	354	2 596	1 127	1 133	982	1 005
Persons employed	233	359	405	363	64	83	397	94	249	79	138
March quarter 2000											
Establishments	25	34	15	22	4	5	24	15	13	14	10
Guest rooms	671	1 012	467	696	115	118	798	359	424	321	301
Bed spaces	1 987	3 039	1 084	2 129	243	320	2 501	1 130	1 077	973	1 064
Persons employed	256	314	441	381	85	74	391	102	262	78	155
ROOM NIGHTS OCCUPIED ('000)											
1999											
March quarter	27.5	44.8	14.1	40.8	2.9	5.3	37.2	14.4	13.7	14.6	16.8
2000											
January	11.6	10.5	4.7	12.7	0.5	1.6	11.2	4.0	3.6	4.0	7.0
February	8.9	12.4	6.2	11.9	1.5	1.7	11.7	3.8	4.2	3.5	5.8
March	10.1	13.8	6.3	13.7	1.7	2.4	15.0	5.3	5.4	5.5	5.2
March quarter	30.6	36.6	17.2	38.3	3.7	5.7	37.9	13.1	13.2	13.0	18.0
ROOM OCCUPANCY RATES (%)											
1999											
March quarter	46.1	47.2	38.7	65.3	35.8	49.7	51.3	44.5	35.9	50.8	66.8
2000											
January	55.8	33.4	32.4	58.7	14.5	44.9	45.2	35.7	27.6	40.5	74.8
February	47.4	42.3	45.7	59.0	46.0	49.9	50.4	36.5	34.0	37.4	66.0
March	48.5	43.9	43.6	63.5	47.1	64.4	60.8	48.0	41.1	54.9	56.1
March quarter	50.7	39.8	40.5	60.5	35.6	53.1	52.2	40.2	34.2	44.4	65.6
GUEST NIGHTS ('000)											
1999											
March quarter	57.0	64.9	20.3	73.4	3.4	9.2	77.9	27.7	20.7	27.3	40.6
2000											
January	26.0	17.8	7.2	24.7	0.8	3.1	26.4	8.7	6.4	8.3	19.7
February	15.5	17.7	8.8	19.0	1.8	2.9	21.7	7.7	6.2	5.8	11.4
March	18.4	21.0	9.0	23.3	2.0	3.7	30.5	10.6	8.3	9.5	11.6
March quarter	59.8	56.5	25.0	66.9	4.6	9.6	78.5	27.0	20.9	23.6	42.7
GUEST ARRIVALS ('000)											
1999											
March quarter	38.3	35.5	11.5	39.9	2.2	4.9	48.5	18.3	10.9	17.1	23.4
2000											
January	15.5	10.5	4.4	14.2	0.5	1.5	17.2	5.8	3.4	5.7	10.3
February	10.0	10.1	5.1	11.0	1.0	1.2	13.5	5.3	3.2	3.9	6.5
March	11.7	12.6	5.3	13.6	1.3	1.7	18.2	6.7	3.9	6.2	7.5
March quarter	37.3	33.2	14.8	38.9	2.9	4.4	49.0	17.8	10.5	15.8	24.3
TAKINGS FROM ACCOMMODATION (\$'000)											
1999											
March quarter	1 922	2 913	1 492	3 632	313	609	2 893	1 001	1 496	793	1 494
2000											
January	896	727	447	1 153	55	231	931	297	r 396	264	721
February	572	836	618	1 067	172	238	969	261	r 549	223	500
March	643	953	640	1 279	190	296	1 226	378	r 658	341	441
March quarter	2 111	2 516	1 705	3 499	417	765	3 126	935	r 1 602	828	1 661

NOTE!
Revised data for
March quarter 2000.
See 'Data Revision' note
on page 2.

	New South Wales	Victoria	Queensland	South Australia	Western Australia	Tasmania	Northern Territory	Australian Capital Territory	Australia
ESTABLISHMENTS, CAPACITY AND EMPLOYMENT									
March quarter 1997									
Establishments	374	343	140	129	139	35	25	2	1 185
Capacity									
On-site vans	2 925	1 798	910	733	1 022	n.p.	107	n.p.	7 680
Other powered sites	42 431	35 272	10 257	11 280	11 950	n.p.	2 308	n.p.	116 035
Unpowered sites	12 650	11 009	5 391	4 794	3 514	n.p.	1 910	n.p.	40 556
Cabins, flats, etc.	3 284	2 384	1 407	1 458	961	n.p.	147	n.p.	9 932
<i>Total Capacity</i>	<i>61 290</i>	<i>50 463</i>	<i>17 965</i>	<i>18 265</i>	<i>17 447</i>	<i>n.p.</i>	<i>4 472</i>	<i>n.p.</i>	<i>174 203</i>
Sites occupied by long-term guests	3 804	1 674	1 715	656	1 304	n.p.	302	n.p.	9 625
Other sites permanently reserved	21 190	15 284	712	1 743	2 273	n.p.	6	n.p.	42 228
Persons employed	1 911	1 371	681	549	686	n.p.	133	n.p.	5 485
March quarter 2000									
Establishments	375	329	158	127	r 140	34	33	2	1 197
Capacity									
On-site vans	3 366	1 961	1 069	765	955	n.p.	96	n.p.	r 8 421
Other powered sites	r 40 634	33 150	11 450	10 898	r 13 016	n.p.	2 858	n.p.	r 114 419
Unpowered sites	10 443	9 773	4 713	3 681	3 017	n.p.	2 166	n.p.	r 34 982
Cabins, flats, etc.	r 5 435	3 058	2 069	1 679	r 1 447	n.p.	379	n.p.	r 14 401
<i>Total Capacity</i>	<i>r 59 878</i>	<i>47 942</i>	<i>19 301</i>	<i>17 023</i>	<i>r 18 435</i>	<i>n.p.</i>	<i>5 499</i>	<i>n.p.</i>	<i>r 172 223</i>
Sites occupied by long-term guests	3 927	1 959	2 004	732	r 1 646	n.p.	276	n.p.	10 734
Other sites permanently reserved	r 20 535	16 507	819	2 115	2 390	n.p.	3	n.p.	r 43 422
Persons employed	2 106	1 444	793	575	806	n.p.	232	n.p.	6 122
SITE NIGHTS OCCUPIED ('000)									
1997									
<i>March quarter</i>	3 312.3	2 290.6	514.2	534.5	624.4	n.p.	56.6	n.p.	7 519.8
2000									
January	r 1 268.3	940.5	236.3	245.0	r 261.9	n.p.	22.4	n.p.	r 3 063.1
February	r 958.1	707.6	156.4	170.2	r 199.1	n.p.	20.3	n.p.	r 2 279.6
March	r 991.3	771.6	174.8	195.3	r 205.8	n.p.	26.7	n.p.	r 2 430.1
<i>March quarter</i>	<i>r 3 217.7</i>	<i>2 419.7</i>	<i>567.5</i>	<i>610.5</i>	<i>r 666.8</i>	<i>n.p.</i>	<i>69.4</i>	<i>n.p.</i>	<i>r 7 772.7</i>
SITE OCCUPANCY RATES (%)									
1997									
<i>March quarter</i>	60.0	50.4	31.8	32.5	39.8	n.p.	14.1	n.p.	48.0
2000									
January	r 68.3	63.3	39.5	46.4	r 45.9	n.p.	13.2	n.p.	r 57.3
February	r 55.2	50.9	27.9	34.5	r 37.3	n.p.	12.7	n.p.	r 45.6
March	r 53.4	51.9	29.2	37.0	r 36.1	n.p.	16.4	n.p.	r 45.5
<i>March quarter</i>	<i>r 59.1</i>	<i>55.5</i>	<i>32.3</i>	<i>39.4</i>	<i>r 39.8</i>	<i>n.p.</i>	<i>14.1</i>	<i>n.p.</i>	<i>r 49.6</i>
TAKINGS FROM ACCOMMODATION (\$'000)									
1997									
<i>March quarter</i>	37 983	20 099	7 467	7 504	8 126	n.p.	994	n.p.	84 199
2000									
January	r 21 252	11 133	3 996	4 126	r 4 542	n.p.	471	n.p.	r 46 524
February	r 11 164	5 666	2 478	2 287	r 2 884	n.p.	398	n.p.	r 25 621
March	r 10 876	6 625	2 877	2 702	r 3 002	n.p.	551	n.p.	r 27 370
<i>March quarter</i>	<i>r 43 291</i>	<i>23 424</i>	<i>9 350</i>	<i>9 115</i>	<i>r 10 427</i>	<i>n.p.</i>	<i>1 419</i>	<i>n.p.</i>	<i>r 99 515</i>

(a) Comprising establishments with 40 or more powered sites and cabins, etc. (see Explanatory Notes).

NOTE!
Revised data for
March quarter 2000.
See 'Data Revision' note
on page 2.

	New South Wales	Victoria	Queensland	South Australia	Western Australia	Tasmania	Northern Territory	Australian Capital Territory	Australia
ESTABLISHMENTS, CAPACITY AND EMPLOYMENT									
March quarter 1997									
Establishments	586	454	386	161	214	46	38	4	1 889
Capacity									
On-site vans	5 928	3 332	4 900	951	1 918	299	275	57	17 660
Other powered sites	59 178	42 257	27 497	13 807	18 004	3 131	3 675	458	168 007
Unpowered sites	16 088	12 429	8 784	5 562	4 937	1 633	2 378	419	52 230
Cabins, flats, etc.	5 141	3 614	3 826	1 789	1 806	412	230	94	16 912
<i>Total Capacity</i>	<i>86 335</i>	<i>61 632</i>	<i>45 007</i>	<i>22 109</i>	<i>26 665</i>	<i>5 475</i>	<i>6 558</i>	<i>1 028</i>	<i>254 809</i>
Sites occupied by long-term guests	14 230	5 990	13 655	1 880	5 302	378	948	252	42 635
Other sites permanently reserved	22 284	15 598	1 138	1 777	2 540	1 050	14	—	44 401
Persons employed	2 842	1 755	1 727	669	1 060	213	205	31	8 502
March quarter 2000									
Establishments	571	428	365	152	r 215	44	47	4	1 827
Capacity									
On-site vans	6 718	3 248	5 089	991	1 970	r 309	275	166	r 18 766
Other powered sites	r 54 276	39 264	25 425	12 809	r 18 406	r 2 975	4 186	344	r 157 685
Unpowered sites	13 175	10 833	7 057	4 254	3 959	r 1 593	2 637	400	r 43 908
Cabins, flats, etc.	r 8 163	4 651	4 902	1 988	r 2 757	r 476	614	107	r 23 658
<i>Total Capacity</i>	<i>r 82 332</i>	<i>57 996</i>	<i>42 473</i>	<i>20 042</i>	<i>r 27 092</i>	<i>r 5 354</i>	<i>7 712</i>	<i>1 017</i>	<i>r 244 017</i>
Sites occupied by long-term guests	12 894	6 060	11 754	1 878	r 5 106	329	836	236	39 093
Other sites permanently reserved	r 21 988	16 838	1 245	2 151	2 604	1 091	3	—	r 45 920
Persons employed	3 078	1 821	1 728	665	r 1 193	215	295	68	9 063
SITE NIGHTS OCCUPIED ('000)									
1997									
<i>March quarter</i>	<i>4 611.1</i>	<i>2 808.3</i>	<i>1 852.1</i>	<i>686.2</i>	<i>1 078.3</i>	<i>227.5</i>	<i>119.5</i>	<i>37.9</i>	<i>11 421.0</i>
2000									
January	r 1 712.8	1 114.6	640.3	292.9	r 408.5	99.1	49.5	11.9	r 4 329.6
February	r 1 331.4	868.3	518.2	211.9	r 332.8	77.8	44.6	18.6	r 3 403.6
March	r 1 390.8	946.2	565.0	241.4	r 350.5	75.7	53.2	11.8	r 3 634.6
<i>March quarter</i>	<i>r 4 435.1</i>	<i>2 929.1</i>	<i>1 723.5</i>	<i>746.2</i>	<i>r 1 091.6</i>	<i>252.6</i>	<i>147.3</i>	<i>42.4</i>	<i>r 11 367.8</i>
SITE OCCUPANCY RATES (%)									
1997									
<i>March quarter</i>	<i>59.3</i>	<i>50.6</i>	<i>45.8</i>	<i>34.5</i>	<i>45.0</i>	<i>46.2</i>	<i>20.2</i>	<i>41.0</i>	<i>49.8</i>
2000									
January	r 63.9	62.0	48.6	47.1	r 48.6	r 59.7	20.7	37.8	r 57.2
February	r 57.3	51.6	42.1	36.5	r 42.4	r 50.1	19.9	63.1	r 48.1
March	r 57.4	52.6	42.9	38.8	r 41.7	r 45.6	23.0	37.6	r 48.1
<i>March quarter</i>	<i>r 59.6</i>	<i>55.5</i>	<i>44.6</i>	<i>40.9</i>	<i>r 44.3</i>	<i>r 51.9</i>	<i>21.2</i>	<i>45.8</i>	<i>r 51.2</i>
TAKINGS FROM ACCOMMODATION (\$'000)									
1997									
<i>March quarter</i>	<i>54 119</i>	<i>26 024</i>	<i>22 483</i>	<i>9 105</i>	<i>14 400</i>	<i>2 626</i>	<i>1 665</i>	<i>811</i>	<i>131 234</i>
2000									
January	r 28 537	13 436	9 172	4 674	r 6 739	1 291	732	288	r 64 869
February	r 16 325	7 649	6 884	2 725	r 4 773	997	638	222	r 40 211
March	r 16 570	8 910	7 843	3 185	r 5 173	1 014	833	217	r 43 746
<i>March quarter</i>	<i>r 61 432</i>	<i>29 995</i>	<i>23 899</i>	<i>10 584</i>	<i>r 16 685</i>	<i>3 302</i>	<i>2 203</i>	<i>726</i>	<i>r 148 825</i>

(a) Comprising establishments with 40 or more powered sites and cabins, etc. (see Explanatory Notes).

EXPLANATORY NOTES

INTRODUCTION

1 This publication contains data from the ABS quarterly Survey of Tourist Accommodation (STA). The STA is a mailout collection that completely enumerates all in-scope accommodation establishments.

2 From the March quarter 1998, the scope and collection strategy for the STA were changed to include only significant accommodation establishments. Data series presented in this publication which relate to the 1997 calendar year have been recompiled on the basis of the new scope.

SCOPE

3 On a quarterly basis the STA includes hotels, motels, guest houses and serviced apartments with 15 or more rooms.

4 Every third year, beginning with 2000 the STA has been expanded to also include:

- holiday flats, units and houses of letting entities with 15 or more rooms or units;
- caravan parks with 40 or more powered sites;
- visitor hostels with 25 or more beds.

5 The short-term non-residential accommodation, which is in scope of this survey, is accommodation which is not let out on a lease basis, and which is let out to guests who would generally, although not necessarily, stay for periods of less than two months.

6 Some establishments included in the survey such as caravan parks also provide long-term residential accommodation. For hotels, motels and guest houses, the amount of such activity is considered to be insignificant and is included in the data presented in this publication. For serviced apartments, only short-term non-residential accommodation is included.

DEFINITIONS OF ACCOMMODATION ESTABLISHMENTS

7 The STA includes the following categories of establishments which provide predominantly short-term non-residential accommodation to the general public:

- hotels and resorts with facilities - establishments with 15 or more rooms which are licensed to operate a public bar and which provide accommodation on a room/suite basis, with a bath/shower and toilet in most guest rooms, but which do not have full cooking facilities (i.e. hot plates and oven/microwave) in most guest rooms;
- motels, private hotels and guest houses with facilities - establishments with 15 or more rooms which are not licensed to operate a public bar, and which provide accommodation on a room/suite basis, with a bath/shower and toilet in most guest rooms, but which do not have full cooking facilities (i.e. hot plates and oven/microwave) in most guest rooms;
- serviced apartments - establishments with 15 or more units which mostly comprise self-contained units at the same location, and which are available on a unit/apartment basis to the general public for a minimum of one night. The units should have full cooking facilities (i.e. hot plates and oven/microwave), refrigerator and bath/shower and toilet facilities; all bed linen and towels should be provided, and daily servicing (i.e. cleaning and bed making) must be available through the on-site management, although this service may not necessarily be used.

EXPLANATORY NOTES *continued*

	<ul style="list-style-type: none">■ holiday flats, units and houses - (excluding establishments predominantly operated on a time-share basis) which are operated by owners, managers or real estate agents who have sole letting rights to at least 15 flats, units or houses for short-term letting. They are mainly self-contained in terms of cooking, bath (or shower) and toilet facilities and do not have breakfast available for guests. Data for holiday flats units or houses include short-term owner operation as well as paying guest occupation.■ caravan parks - establishments with 40 or more powered sites and cabins, etc. which provide either short-term or long-term accommodation to the general public and which provide powered sites for caravans and toilet, shower and laundry facilities for guests.■ visitor hostels - establishments with 25 or more bed spaces which provide accommodation to visitors on a bed basis (rather than by room). This category does not include establishments providing charity type accommodation (e.g. Salvation Army hostels) nor hotels, motels and guest houses without in-room facilities which provide accommodation on a per room basis.
CLASSIFICATION CHANGES	<p>8 As a result of the separate classification of serviced apartments from the March quarter 1998, there have been several changes to definitions of accommodation units. Some units, which were formerly in categories such as hotels, motels or holiday flats, units and houses are now classified as serviced apartments. A small number of establishments which were previously classified as motels have been reclassified as holiday flats, units and houses and are therefore no longer in scope of the quarterly STA, except as described in paragraph 4.</p>
COVERAGE	<p>9 Coverage is comprehensive and from the September quarter 1999, is obtained from the Australian Automobile Association accommodation guide, supplied as an electronic file, which is updated twice yearly. This is supplemented by notification of new tourism developments and their likely opening dates in selected guides, major tourism journals and periodicals and newspapers. Periodic comparison with lists of accommodation establishments provided by the various Tourism Commissions and Industry Associations is also undertaken.</p>
DATA QUALITY	<p>10 The survey does not have a sample component and the data are not subject to sampling variability. However, other inaccuracies collectively referred to as non-sampling error may affect the data. These non-sampling errors may arise from a number of sources, including:</p> <ul style="list-style-type: none">■ errors in the reporting of data by respondents;■ errors in the process of capturing data;■ estimation for missing data; and■ definition and classification errors. <p>Every effort has been made to reduce non-sampling error to a minimum by careful design and testing of questionnaires, and efficient operating procedures and systems used to compile statistics.</p> <p>11 The June quarter 2000 response rates were:</p> <ul style="list-style-type: none">■ 95% licensed hotels, motels and guest houses, serviced apartments.■ 94% holiday flats, units and houses,■ 94% caravan parks.■ 94% visitor hostels.

EXPLANATORY NOTES *continued*

REGIONAL DATA

12 Survey results are aggregated to Tourism Regions as defined by relevant State and Territory Tourist Commissions or equivalent organisations. Details of the composition of Tourism Regions, including maps, are available on request.

ANNUAL CAPACITY DATA

13 ABS releases counts of accommodation establishments and their capacity as at the end of December each year in respect of the pre-1998 scope of the survey (but recognising serviced apartments separately) as follows:

- hotels, motels and guest houses and serviced apartments with facilities and having five or more rooms;
- holiday flats, units and houses (other than those included with serviced apartments) which are operated by owners, managers or real estate agents who have sole letting rights to at least five flats, units or houses for short term letting;
- all caravan parks regardless of size; and
- all visitor hostels regardless of size.

14 As a result of classification changes applied from March quarter 1998 onward, data will not be comparable with that previously published for particular accommodation types.

15 These counts are published annually in a quarterly issue of *Tourism Indicators, Australia* (Cat. no. 8634.0). Counts in respect of December 1999 will be published in the June quarter 2000 edition (expected release date 10 November 2000).

UNPUBLISHED STATISTICS

16 The ABS may make available on request certain unpublished tourist accommodation statistics, including statistics for past quarters and for specific areas and more detailed information for specific data items. For example, detailed employment statistics showing the number of full-time, part-time or casual employees may be available.

RELATED PUBLICATIONS

17 Other ABS publications and products which may be of interest include:
Directory of Tourism Statistics, 2000 (Cat. no. 1130.0) (irregular)
Overseas Arrivals and Departures, Australia (Cat. no. 3401.0) (issued monthly)
Tourism Indicators, Australia (Cat. no. 8634.0) (issued quarterly)
Tourist Accommodation, Small Area Data Standard Data Service (SDS) products for each State/Territory (except the ACT) (Cat. no. 8635.n.40.001) (issued quarterly).

18 Current publications produced by the ABS are listed in the *Catalogue of Publications and Products* (Cat. no. 1101.0). The ABS also issues the *Release Advice* (Cat. no. 1105.0) on Tuesdays and Fridays which lists publications to be released in the next few days. Both are available from any ABS office or the ABS web site.

EFFECTS OF ROUNDING

19 Where figures have been rounded, discrepancies may occur between totals and the sum of the component items.

GLOSSARY

Average length of stay	<p>Average length of stay is expressed in numbers of days and calculated:</p> <ul style="list-style-type: none"> • for hotels, motels and guest houses and serviced apartments, by dividing <i>Guest nights</i> by <i>Guest arrivals</i>. • for holiday flats, units and houses, by dividing <i>Unit nights occupied</i> by <i>Unit lettings</i>.
Bed spaces	Three-quarter beds are counted as one bed space; double beds as two bed spaces. Cots are excluded.
Capacity	Capacity in terms of <i>Guest rooms</i> , <i>serviced apartment units</i> , <i>visitor hostel bed spaces</i> , <i>holiday units</i> or <i>caravan park sites</i> is the maximum number available to accommodate paying guests during the survey period. Capacity closed temporarily for seasonal reasons is included.
Caravan park sites	Includes <i>On-site vans</i> , <i>Other powered sites</i> , <i>Unpowered sites</i> and <i>Cabins</i> , etc.
Establishments	For hotels, motels and guest houses and serviced apartments, caravan parks and visitor hostels, the number of establishments within the scope of the survey which operated for any part of the survey period, or which closed temporarily for the quarter for seasonal reasons.
Guest arrivals	The total number of paying guests counted only on the first night they stayed at the accommodation establishment during the survey period.
Guest nights	The total number of paying guests counted on each night they stayed at the accommodation establishment during the survey period.
Guest rooms	The maximum number of rooms available at each establishment during the survey period for accommodating short-term paying guests. Units and apartments within serviced apartments are treated as rooms in these survey results.
Letting entities	For holiday flats, units and houses, the number of owners, managers or real estate agents within the scope of the survey who operated for any part of the survey period.
Long-term caravan parks	Caravan parks where the majority of paying guests occupied sites for periods of more than two months.
Occupancy	<p>Occupancy in terms of <i>Room nights</i>, <i>Unit nights</i> or <i>Site nights occupied</i> refers to the total number of nights each guest room, serviced apartment unit, holiday unit or caravan park site was occupied during the survey period.</p> <p>Occupancy in terms of <i>Guest nights</i> refers to the total number of paying guests counted on each night they stayed at the accommodation establishment during the survey period.</p>
Occupancy rates	<p><i>Occupancy rates</i> represent occupancy expressed as a percentage of total capacity available during the survey period, e.g. for the period</p> $\text{Room occupancy rate (\%)} = \frac{\text{Room nights occupied}}{(\text{Guest rooms}) \times (\text{No. of days in the period})} \times 100$ <p>providing that, for establishments closing (other than for seasonal reasons) or opening during the survey period, the denominator of the above expression includes only operating periods.</p>

Other sites permanently reserved	The total number of powered and unpowered sites, on-site vans and cabins, etc. continuously let for two months or more of the survey period to tenants who occupy the sites only on a casual or sporadic basis.
Persons employed	The total number of persons working at each accommodation establishment at the end of the survey period (including working proprietors and those working on other than accommodation activities).
Room nights available	The number of guest rooms/units available multiplied by the number of days for which they were available during the survey period. For establishments closing (other than for seasonal reasons) or opening during this period, operating periods only are included.
Serviced apartment units	Units and apartments within serviced apartments are treated as rooms in these survey results.
Short-term caravan parks	Caravan parks where the majority of paying guests occupy sites for periods of less than two months.
Site nights available	The total number of nights each caravan park site was occupied during the survey period.
Sites occupied by long-term guests	The total number of sites, etc. occupied at the end of the survey period by guests who have stayed continuously for 2 months or more.
Star grading	<p>The grading of hotels, motels and guest houses with facilities and serviced apartments based on the classification system used by members of the Australian Automobile Association (AAA). The gradings are allocated according to a points system based on the amenities and facilities available to guests. Details of the grading scheme are contained in the RACV-RAASA members' publication <i>Accommodation Australia</i>, or the individual State guides. For the purpose of classifying establishments to a star grading in this publication, 'half' star gradings are ignored (e.g. a two and a half star grading has been shown as two star).</p> <p>From the June quarter 1999, some (very few) large establishments not star graded by the AAA have been allocated a star grade by the ABS for Survey of Tourist Accommodation statistical tabulation purposes.</p>
Takings from accommodation	Gross revenue from the provision of accommodation, including bed taxes. Takings from meals are excluded. Takings from accommodation for each month generally represent the takings received during that month. Where payments are received in advance of, or after, the provision of accommodation to guests, the monthly figure for takings from accommodation may not necessarily bear a direct relationship to the number of guests accommodated during the month.
Unit lettings	The total number of times a holiday flat, unit or house was occupied by a new tenant, counted only on the first night it was occupied by the new tenant.
Unit nights	The total number of nights each holiday flat, unit or house was occupied during the survey period.

FOR MORE INFORMATION...

- INTERNET* **www.abs.gov.au** the ABS web site is the best place to start for access to summary data from our latest publications, information about the ABS, advice about upcoming releases, our catalogue, and Australia Now—a statistical profile.
- LIBRARY* A range of ABS publications is available from public and tertiary libraries Australia-wide. Contact your nearest library to determine whether it has the ABS statistics you require, or visit our web site for a list of libraries.
- CPI INFOLINE* For current and historical Consumer Price Index data, call 1902 981 074 (call cost 77c per minute).
- DIAL-A-STATISTIC* For the latest figures for National Accounts, Balance of Payments, Labour Force, Average Weekly Earnings, Estimated Resident Population and the Consumer Price Index call 1900 986 400 (call cost 77c per minute).

INFORMATION SERVICE

Data which have been published and can be provided within five minutes are free of charge. Our information consultants can also help you to access the full range of ABS information—ABS user-pays services can be tailored to your needs, time frame and budget. Publications may be purchased. Specialists are on hand to help you with analytical or methodological advice.

- PHONE* **1300 135 070**
- EMAIL* **client.services@abs.gov.au**
- FAX* 1300 135 211
- POST* Client Services, ABS, GPO Box 796, Sydney 1041

WHY NOT SUBSCRIBE?

ABS subscription services provide regular, convenient and prompt deliveries of ABS publications and products as they are released. Email delivery of monthly and quarterly publications is available.

- PHONE* 1300 366 323
- EMAIL* subscriptions@abs.gov.au
- FAX* 03 9615 7848
- POST* Subscription Services, ABS, GPO Box 2796Y, Melbourne 3001



2863500006006
ISSN 1031-0770

RRP \$21.00

© Commonwealth of Australia 2000